

BlackJack Premium EPDM Snap-in valve stems are made with EPDM synthetic rubber rather than natural rubber and meet SAE 1205 – 1206 ozone requirements. EPDM rubber also has a broader temperature range than natural rubber and will remain flexible in extremely cold weather. BlackJack valve stems are manufactured to the specifications of the TRA (Tire and Rim Association).

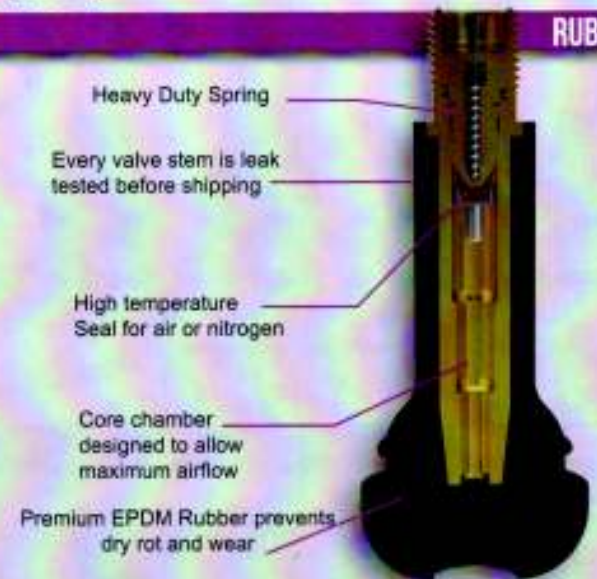
Specifications: Maximum rim thickness of .156"
 Maximum pressure of 65 psi (4.5 bars)
 Maximum speed of 130 MPH (209 KPH)



SKU #	TR #	PRODUCT DESCRIPTION	RIM HOLE	QTY
Vs-412-2	(TR412)	3/4" Snap-In Valve Stem	.453"	Blister Card of 2
Vs-412-50	(TR412)	3/4" Snap-In Valve Stem	.453"	Pic-Pak of 50
Vs-412-500	(TR412)	3/4" Snap-In Valve Stem	.453"	Box of 500
Vs-413-2	(TR413)	1 1/4" Snap-In Valve Stem	.453"	Blister Card of 2
Vs-413-50	(TR413)	1 1/4" Snap-In Valve Stem	.453"	Pic-Pak of 50
Vs-413-500	(TR413)	1 1/4" Snap-In Valve Stem	.453"	Box of 500
Vs-414-2	(TR414)	1 1/2" Snap-In Valve Stem	.453"	Blister Card of 2
Vs-414-50	(TR414)	1 1/2" Snap-In Valve Stem	.453"	Pic-Pak of 50
Vs-414-500	(TR414)	1 1/2" Snap-In Valve Stem	.453"	Box of 500
Vs-415-2	(TR415)	1 1/4" Snap-In Valve Stem	.625"	Blister Card of 2
Vs-415-40	(TR415)	1 1/4" Snap-In Valve Stem	.625"	Pic-Pak of 40
Vs-415-400	(TR415)	1 1/4" Snap-In Valve Stem	.625"	Box of 400
Vs-418-2	(TR418)	2" Snap-In Valve Stem	.453"	Blister Card of 2
Vs-418-40	(TR418)	2" Snap-In Valve Stem	.453"	Pic-Pak of 40
Vs-418-400	(TR418)	2" Snap-In Valve Stem	.453"	Box of 400
Vs-423-2	(TR423)	2 1/2" Snap-In Valve Stem	.453"	Blister Card of 2
Vs-423-30	(TR423)	2 1/2" Snap-In Valve Stem	.453"	Pic-Pak of 30
Vs-423-300	(TR423)	2 1/2" Snap-In Valve Stem	.453"	Box of 300
Vs-425-2	(TR425)	2" Snap-In Valve Stem	.625"	Blister Card of 2
Vs-425-30	(TR425)	2" Snap-In Valve Stem	.625"	Pic-Pak of 30
Vs-425-500	(TR425)	2" Snap-In Valve Stem	.625"	Box of 500

Our EPDM Rubber meets SAE 1205-1206 Ozone Requirements

RUBBER



Vs-425 Vs-423 Vs-418 Vs-415 Vs-414 Vs-413 Vs-412

CHROME SLEEVE

Chrome Sleeve and Chrome Cap Snap-In valve stem. Rated to 65 psi max cold inflation pressure and rim thickness of .156" and .453" or .625" rim hole.

SKU #	TR #	PRODUCT DESCRIPTION	QTY
Vs-413C-2	(TR413C)	1 1/4" Chrome Sleeved Valve Stem	Blister Card of 2
Vs-413C-20	(TR413C)	1 1/4" Chrome Sleeved Valve Stem	Pic-Pak of 20
Vs-413C-500	(TR413C)	1 1/4" Chrome Sleeved Valve Stem	Case of 500
Vs-414C-2	(TR414C)	1 1/2" Chrome Sleeved Valve Stem	Blister Card of 2
Vs-414C-20	(TR414C)	1 1/2" Chrome Sleeved Valve Stem	Pic-Pak of 20
Vs-415C-2	(TR415C)	1 1/4" Chrome Sleeved Valve Stem	Blister Card of 2
Vs-415C-20	(TR415C)	1 1/4" Chrome Sleeved Valve Stem	Pic-Pak of 20
Vs-418C-2	(TR418C)	2" Chrome Sleeved Valve Stem	Blister Card of 2
Vs-418C-20	(TR418C)	2" Chrome Sleeved Valve Stem	Pic-Pak of 20

Our EPDM Rubber meets SAE 1205-1206 Ozone Requirements



Vs-413C Vs-414C Vs-415C Vs-418C

HIGH PRESSURE SNAP-IN VALVE STEMS

High Pressure Snap-In Valve Stems with rim thickness of .030" and .453" or .625" rim hole. Vs-600HP & Vs-602HP rated to 80 psi max cold pressure, Vs-801HP & Vs-802HP rated to 100 psi max cold pressure.



SKU #	TR #	SIZE	RIM HOLE	QTY
Vs-600HP-2	(TR600HP)	1 1/4" Length	.453"	Blister Card of 2
Vs-600HP-20	(TR600HP)	1 1/4" Length	.453"	Pic-Pak of 20
Vs-600HP-100	(TR600HP)	1 1/4" Length	.453"	Pail of 100
Vs-600HP-500	(TR600HP)	1 1/4" Length	.453"	Case of 500
Vs-602HP-2	(TR602HP)	2" Length	.453"	Blister Card of 2
Vs-602HP-20	(TR602HP)	2" Length	.453"	Pic-Pak of 20
Vs-602HP-100	(TR602HP)	2" Length	.453"	Pail of 100
Vs-602HP-400	(TR602HP)	2" Length	.453"	Pail of 400
Vs-801HP-2	(TR801HP)	1 1/4" Length	.625"	Blister Card of 2
Vs-801HP-20	(TR801HP)	1 1/4" Length	.625"	Pic-Pak of 20
Vs-801HP-100	(TR801HP)	1 1/4" Length	.625"	Bulk Pkg of 100
Vs-801HP-300	(TR801HP)	1 1/4" Length	.625"	Box of 300
Vs-802HP-2	(TR802HP)	2" Length	.625"	Blister Card of 2
Vs-802HP-20	(TR802HP)	2" Length	.625"	Pic-Pak of 20
Vs-802HP-50	(TR802HP)	2" Length	.625"	Pail of 50
Vs-802HP-250	(TR802HP)	2" Length	.625"	Box of 250

Our EPDM Rubber meets SAE J205-J206 Ozone Requirements

CHROME CLAMP-IN



Vs-5991B Vs-416A Vs-416SS Vs-416



Vs-416L Vs-PVR-152 Vs-PVR-153

SKU #	TR #	Effective Length	Degree of Bend	QTY
Vs-416L-1	(TR416L)	2 1/4"	-	Each
Vs-416L-10	(TR416L)	2 1/4"	-	Pic-Pak of 10
Vs-416-1	(TR416)	1 1/4"	-	Blister Card of 1
Vs-416-10	(TR416)	1 1/4"	-	Pic-Pak of 10
Vs-416-100	(TR416)	1 1/4"	-	Bulk Pkg of 100
Vs-416-500	(TR416)	1 1/4"	-	Bulk Pkg of 500
Vs-416A-1	(TR416A)	1"	-	Blister Card of 1
Vs-416A-10	(TR416A)	1"	-	Pic-Pak of 10
Vs-416SS-1	(TR416SS)	1 1/8"	-	Blister Card of 1
Vs-416SS-10	(TR416SS)	1 1/8"	-	Pic-Pak of 10
Vs-5991B-1	(TR5991B)	1"	-	Blister Card of 1
Vs-5991B-10	(TR5991B)	1"	-	Pic-Pak of 10
Vs-5991B-100	(TR5991B)	1"	-	Bulk Pkg of 100
Vs-PVR-152-1	(PVR-152)	1 1/2"	90°	Blister Card of 1
Vs-PVR-152-10	(PVR-152)	1 1/2"	90°	Pic-Pak of 10
Vs-PVR-153-1	(PVR-153)	2 3/4"	90°	Blister Card of 1
Vs-PVR-153-10	(PVR-153)	2 3/4"	90°	Pic-Pak of 10

CHROME ENKEI CLAMP-IN

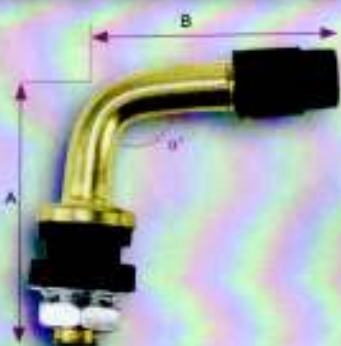


Vs-6 Vs-8 Vs-8-45 Vs-8-90

SKU #	TR #	Effective Length	Degree of Bend	QTY
Vs-6-1	(Vs-6)	1" (.236 rim hole)	-	Blister Card of 1
Vs-6-10	(Vs-6)	1" (.236 rim hole)	-	Pic-Pak of 10
Vs-8-1	(Vs-8)	3/4"	-	Blister Card of 1
Vs-8-10	(Vs-8)	3/4"	-	Pic-Pak of 10
Vs-8-100	(Vs-8)	3/4"	-	Bulk Pkg of 100
Vs-8-500	(Vs-8)	3/4"	-	Bulk Pkg of 500
Vs-8-45-1	(Vs-8-45)	1 1/8"	45°	Blister Card of 1
Vs-8-45-10	(Vs-8-45)	1 1/8"	45°	Pic-Pak of 10
Vs-8-45-100	(Vs-8-45)	1 1/8"	45°	Bulk Pkg of 100
Vs-8-45-500	(Vs-8-45)	1 1/8"	45°	Bulk Pkg of 500
Vs-8-90-1	(Vs-8-90)	1 1/4"	90°	Blister Card of 1
Vs-8-90-10	(Vs-8-90)	1 1/4"	90°	Pic-Pak of 10
Vs-8-90-100	(Vs-8-90)	1 1/4"	90°	Bulk Pkg of 100
Vs-8-90-500	(Vs-8-90)	1 1/4"	90°	Bulk Pkg of 500

SNAP-IN

SKU #	TR #	PRODUCT DESCRIPTION	A	B	α	RIM HOLES	QTY
Vs-PVR30-1	PVR30	Snap-In Motorcycle & Scooter Valve Stem, Brass	Φ 15mm	63mm	90°	Φ 11.5mm / .453" dia	Blister Card
Vs-PVR30-10	PVR30	Snap-In Motorcycle & Scooter Valve Stem, Brass	Φ 15mm	63mm	90°	Φ 11.5mm / .453" dia	Pic-Pak of 10
Vs-PVR32-1	PVR32	Snap-In Motorcycle & Scooter Valve Stem, Brass	Φ 15mm	54mm	90°	Φ 11.5mm / .453" dia	Blister Card
Vs-PVR32-10	PVR32	Snap-In Motorcycle & Scooter Valve Stem, Brass	Φ 15mm	54mm	90°	Φ 11.5mm / .453" dia	Pic-Pak of 10
Vs-PVR70-1	PVR70	Snap-In Motorcycle & Scooter Valve Stem, Brass	20mm	30mm	90°	Φ 11.5mm / .453" dia	Blister Card
Vs-PVR70-10	PVR70	Snap-In Motorcycle & Scooter Valve Stem, Brass	20mm	30mm	90°	Φ 11.5mm / .453" dia	Pic-Pak of 10



Vs-PVR30



Vs-PVR32



Vs-PVR70

CLAMP-IN

SKU #	TR #	PRODUCT DESCRIPTION	A	B	α	RIM HOLES	QTY
Vs-430A-1	TR430A	Clamp-in Motorcycle & Scooter Valve Stem, Chrome	Φ 14mm	--	--	Φ 11.5mm / .453" dia	Blister Card
Vs-430A-10	TR430A	Clamp-in Motorcycle & Scooter Valve Stem, Chrome	Φ 14mm	--	--	Φ 11.5mm / .453" dia	Pic-Pak of 10
Vs-JS430-1	JS430	Clamp-in Motorcycle & Scooter Valve Stem, Chrome	Φ 14mm	--	--	Φ 11.5mm / .453" dia	Blister Card
Vs-JS430-10	JS430	Clamp-in Motorcycle & Scooter Valve Stem, Chrome	Φ 14mm	--	--	Φ 11.5mm / .453" dia	Pic-Pak of 10
Vs-VAMD161-1	VAMD161	Clamp-in Motorcycle & Scooter Valve Stem, Chrome	Φ 18mm	--	--	Φ 11.5mm / .453" dia	Blister Card
Vs-VAMD161-10	VAMD161	Clamp-in Motorcycle & Scooter Valve Stem, Chrome	Φ 16mm	--	--	Φ 11.5mm / .453" dia	Pic-Pak of 10



Vs-430A



Vs-JS430



Vs-VAMD161

SPECIALTY VALVE STEMS



Vs-532
Chrome Performance
Valve, Max PSI 200,
.453 Rim Hole



Vs-501-OV
1 1/2" Clamp-In
Valve Stem w/ Oval
Rim Hole

SKU #	PRODUCT DESCRIPTION	QTY
Vs-501-OV-1	1 1/2" Clamp-in Valve Stem, Oval Rim	Each
Vs-501-OV-10	1 1/2" Clamp-in Valve Stem, Oval Rim	Pic-Pak of 10
Vs-501-OV-100	1 1/2" Clamp-in Valve Stem, Oval Rim	Bulk Pkg of 100
Vs-532-1	Chrome Performance Valve, Max 200 PSI, .453" Rim Hole	Blister Card of 1
Vs-532-10	Chrome Performance Valve, Max 200 PSI, .453" Rim Hole	Pic-Pak of 10
Vs-902K-1	Specialty Ford Valve Stem for Accuride Steel 19.5" Wheels	Blister Card of 1
Vs-902K-10	Specialty Ford Valve Stem for Accuride Steel 19.5" Wheels	Pic-Pak of 10
Vs-902WP-1	Specialty Ford Valve Stem for Alcoa Aluminum 16", Front & Rear Wheels	Blister Card of 1
Vs-902WP-10	Specialty Ford Valve Stem for Alcoa Aluminum 16", Front & Rear Wheels	Pic-Pak of 10
Vs-938F-1	Specialty Ford Valve Stem for Accuride Steel Wheels 16" x 6"	Blister Card of 1
Vs-938F-10	Specialty Ford Valve Stem for Accuride Steel Wheels 16" x 6"	Pic-Pak of 10
Vs-944F-1	Specialty Ford Valve Stem for Accuride Steel Wheels 16" x 7"	Blister Card of 1
Vs-944F-10	Specialty Ford Valve Stem for Accuride Steel Wheels 16" x 7"	Pic-Pak of 10
Vs-962C-1	Specialty Ford 23" Bend Valve Stem for Accuride Steel Wheels 16" x 6"	Blister Card of 1
Vs-962C-10	Specialty Ford 23" Bend Valve Stem for Accuride Steel Wheels 16" x 6"	Pic-Pak of 10

NOTE: The above Specialty Ford Valves come with a double seal "Seal Rite" valve cap (See Page 62).



Vs-902K

Ford "F" series trucks with dual wheels, Accuride steel 19.5", front and rear wheels. Brass finish, fits rim hole .453"



Vs-902WP

Ford "F" series trucks with dual wheels, Alcoa Aluminum 16", front and rear wheels. Chrome finish. Fits rim hole .453"



Vs-938F

Ford "Cut-Away" series with dual wheels, Accuride steel 16"x6", front and rear wheels. Nickel finish, fits rim hole .453"



Vs-962C

Ford "F" series trucks with dual wheels, Accuride steel 16"x6", front and rear wheels. Nickel finish, 23" bend, fits rim hole .453"



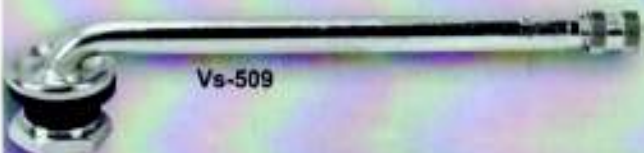
Vs-944F

Ford "Cut-Away" and Cargo Van series with single rear wheels, Accuride Steel 16" x 7" wheels, front and rear wheels. Chrome finish, fits rim hole .453"

DUAL WHEEL

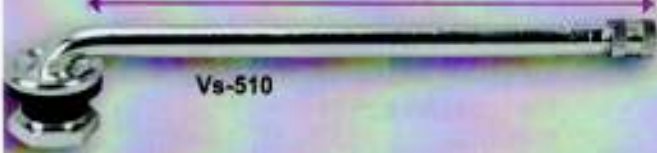


Vs-511



Vs-509

Length of Straight End = 5 1/2"



Vs-510

SKU #	TR #	PRODUCT DESCRIPTION (sorted by length)	QTY
Vs-509-1	(TR509)	4 3/4" eff. Length 90 Degree Angle Bend	Blister Card of 1
Vs-509-10	(TR509)	4 3/4" eff. Length 90 Degree Angle Bend	Pic-Pak of 10
Vs-509-100	(TR509)	4 3/4" eff. Length 90 Degree Angle Bend	Box of 100
Vs-510-1	(TR510)	5 1/2" eff. Length 90 Degree Angle Bend	Blister Card of 1
Vs-510-10	(TR510)	5 1/2" eff. Length 90 Degree Angle Bend	Pic-Pak of 10
Vs-510-100	(TR510)	5 1/2" eff. Length 90 Degree Angle Bend	Box of 100
Vs-511-1	(TR511)	4 1/4" eff. Length 90 Degree Angle Bend	Blister Card of 1
Vs-511-10	(TR511)	4 1/4" eff. Length 90 Degree Angle Bend	Pic-Pak of 10

TR509 4.75" Tubeless Valve for aluminum disc wheels (Nickel Plated) Used in drop-center wheels with .625" rim hole. Recommended torque for installation is 100-125 inch-pounds. Includes **Vh-RG46** rubber grommet.

Tubeless Brass Valve Stems used in trucks and buses with .625" rim hole. Recommended torque for installation is 35-55 inch-pounds. Includes **Vh-RG15** rubber grommet, **Cr-339** high heat valve core and **Vc-337** nickel-plated brass valve cap with seal.

SKU #	TR #	PRODUCT DESCRIPTION (sorted by length)	Angle	QTY
Vs-575-1	TR575	1 1/8" eff. Length Truck & Bus Tubeless Tire Valve	-	Blister Pack of 1
Vs-575-10	TR575	1 1/8" eff. Length Truck & Bus Tubeless Tire Valve	-	Pic-Pak of 10
Vs-575-100	TR575	1 1/8" eff. Length Truck & Bus Tubeless Tire Valve	-	Bulk Pkg of 100
Vs-501-1	TR501	1 1/2" eff. Length Truck & Bus Tubeless Tire Valve	-	Blister Pack of 1
Vs-501-10	TR501	1 1/2" eff. Length Truck & Bus Tubeless Tire Valve	-	Pic-Pak of 10
Vs-501-100	TR501	1 1/2" eff. Length Truck & Bus Tubeless Tire Valve	-	Bulk Pkg of 100
Vs-501-OV-1	(TR501)	1 1/2" Clamp-in Valve Stem, Oval Rim	-	Each
Vs-501-OV-10	(TR501)	1 1/2" Clamp-in Valve Stem, Oval Rim	-	Pic-Pak of 10
Vs-501-OV-100	(TR501)	1 1/2" Clamp-in Valve Stem, Oval Rim	-	Bulk Pkg of 100
Vs-500-1	TR500	2" eff. Length Truck & Bus Tubeless Tire Valve	-	Blister Pack of 1
Vs-500-10	TR500	2" eff. Length Truck & Bus Tubeless Tire Valve	-	Pic-Pak of 10
Vs-500-100	TR500	2" eff. Length Truck & Bus Tubeless Tire Valve	-	Bulk Pkg of 100
Vs-570-1	TR570	3 1/8" eff. Length Truck & Bus Tubeless Tire Valve	-	Blister Pack of 1
Vs-570-10	TR570	3 1/8" eff. Length Truck & Bus Tubeless Tire Valve	-	Pic-Pak of 10
Vs-570-100	TR570	3 1/8" eff. Length Truck & Bus Tubeless Tire Valve	-	Bulk Pkg of 100
Vs-570C-1	TR570C	2" Truck & Bus Tubeless Tire Valve	90°	Blister Pack of 1
Vs-570C-10	TR570C	2" Truck & Bus Tubeless Tire Valve	90°	Pic-Pak of 10
Vs-570C-100	TR570C	2" Truck & Bus Tubeless Tire Valve	90°	Bulk Pkg of 100
Vs-571-1	TR571	3 3/8" eff. Length Truck & Bus Tubeless Tire Valve	-	Blister Pack of 1
Vs-571-10	TR571	3 3/8" eff. Length Truck & Bus Tubeless Tire Valve	-	Pic-Pak of 10
Vs-571-200	TR571	3 3/8" eff. Length Truck & Bus Tubeless Tire Valve	-	Bulk Pkg of 200
Vs-571C-1	TR571C	2 1/4" Truck & Bus Tubeless Tire Valve	90°	Blister Pack of 1
Vs-571C-10	TR571C	2 1/4" Truck & Bus Tubeless Tire Valve	90°	Pic-Pak of 10
Vs-571C-100	TR571C	2 1/4" Truck & Bus Tubeless Tire Valve	90°	Bulk Pkg of 100
Vs-572-1	TR572	3 3/4" eff. Length Truck & Bus Tubeless Tire Valve	-	Blister Pack of 1
Vs-572-10	TR572	3 3/4" eff. Length Truck & Bus Tubeless Tire Valve	-	Pic-Pak of 10
Vs-572-200	TR572	3 3/4" eff. Length Truck & Bus Tubeless Tire Valve	-	Bulk Pkg of 200
Vs-573-1	TR573	4 3/8" eff. Length Truck & Bus Tubeless Tire Valve	-	Blister Pack of 1
Vs-573-10	TR573	4 3/8" eff. Length Truck & Bus Tubeless Tire Valve	-	Pic-Pak of 10
Vs-573-200	TR573	4 3/8" eff. Length Truck & Bus Tubeless Tire Valve	-	Bulk Pkg of 200
Vs-573C-1	TR573C	3 1/4" Truck & Bus Tubeless Tire Valve	90°	Blister Pack of 1
Vs-573C-10	TR573C	3 1/4" Truck & Bus Tubeless Tire Valve	90°	Pic-Pak of 10
Vs-573C-100	TR573C	3 1/4" Truck & Bus Tubeless Tire Valve	90°	Bulk Pkg of 100
Vs-574-1	TR574	5" eff. Length Truck & Bus Tubeless Tire Valve	-	Blister Pack of 1
Vs-574-10	TR574	5" eff. Length Truck & Bus Tubeless Tire Valve	-	Pic-Pak of 10
Vs-574-100	TR574	5" eff. Length Truck & Bus Tubeless Tire Valve	-	Bulk Pkg of 100



Vs-574



Vs-570



Vs-500



Vs-573C



Vs-571C

PREMIUM GROMMET SEAL VALVES FOR ALCOA WHEELS

BlackJack Premium Grommet Seal Valves for Alcoa Wheels offer the following features:

- **MAXIMUM AIR PRESSURE 200 PSI**
- **9.7MM RIM HOLE**
- **LARGER SEALING SURFACE**
- **BETTER RESISTANCE TO WEAR AND TEAR**
- **EXTENDED SEALING LIFE**
- **BETTER PROTECTION AGAINST CORROSION**
- **BEST FOR CORRODED WHEELS**



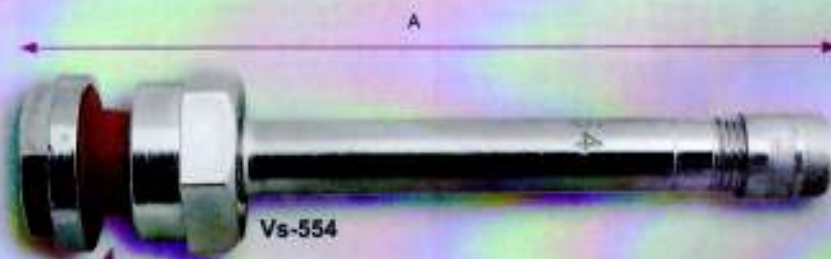
Vs-554C

SKU # *	TR #	PRODUCT DESCRIPTION	Angle	A	B	QTY
Vs-552-1	(TR552)	1 1/4" Truck Valve	-	1.26	-	Blister Card of 1
Vs-552-10	(TR552)	1 1/4" Truck Valve	-	1.26	-	Pic-Pak of 10
Vs-553-1	(TR553)	2 3/8" Truck Valve	-	2.4	-	Blister Card of 1
Vs-553-10	(TR553)	2 3/8" Truck Valve	-	2.4	-	Pic-Pak of 10
Vs-553C-1	(TR553C)	2 3/8" Truck Valve	45°	.93	1.43	Blister Card of 1
Vs-553C-10	(TR553C)	2 3/8" Truck Valve	45°	.93	1.43	Pic-Pak of 10
Vs-553D-1	(TR553D)	2 3/8" Truck Valve	60°	.98	1.38	Blister Card of 1
Vs-553D-10	(TR553D)	2 3/8" Truck Valve	60°	.98	1.38	Pic-Pak of 10
Vs-553E-1	(TR553E)	2 3/8" Truck Valve	75°	.98	1.38	Blister Card of 1
Vs-553E-10	(TR553E)	2 3/8" Truck Valve	75°	.98	1.38	Pic-Pak of 10
Vs-554-1	(TR554)	3" Truck Valve	-	2.86	-	Blister Card of 1
Vs-554-10	(TR554)	3" Truck Valve	-	2.86	-	Pic-Pak of 10
Vs-554C-1	(TR554C)	3" Truck Valve	45°	.98	1.94	Blister Card of 1
Vs-554C-10	(TR554C)	3" Truck Valve	45°	.98	1.94	Pic-Pak of 10
Vs-554D-1	(TR554D)	3" Truck Valve	60°	.98	1.94	Blister Card of 1
Vs-554D-10	(TR554D)	3" Truck Valve	60°	.98	1.94	Pic-Pak of 10
Vs-555-1	(TR555)	3 1/2" Truck Valve	-	3.5	-	Blister Card of 1
Vs-555-10	(TR555)	3 1/2" Truck Valve	-	3.5	-	Pic-Pak of 10
Vs-555D-1	(TR555D)	3 1/2" Truck Valve	60°	.98	2.8	Blister Card of 1
Vs-555D-10	(TR555D)	3 1/2" Truck Valve	60°	.98	2.8	Pic-Pak of 10
Vs-555E-1	(TR555E)	3 1/2" Truck Valve	75°	.98	2.6	Blister Card of 1
Vs-555E-10	(TR555E)	3 1/2" Truck Valve	75°	.98	2.6	Pic-Pak of 10
Vs-556-1	(TR556)	4 3/8" Truck Valve	-	4.27	-	Blister Card of 1
Vs-556-10	(TR556)	4 3/8" Truck Valve	-	4.27	-	Pic-Pak of 10
Vs-556-36-1	(TR556-36)	4 3/8" Truck Valve	36°	.98	3.35	Blister Card of 1
Vs-556-36-10	(TR556-36)	4 3/8" Truck Valve	36°	.98	3.35	Pic-Pak of 10
Vs-556D-1	(TR556D)	4 3/8" Truck Valve	60°	.98	3.35	Blister Card of 1
Vs-556D-10	(TR556D)	4 3/8" Truck Valve	60°	.98	3.35	Pic-Pak of 10
Vs-556E-1	(TR556E)	4 3/8" Truck Valve	75°	.98	3.35	Blister Card of 1
Vs-556E-10	(TR556E)	4 3/8" Truck Valve	75°	.98	3.35	Pic-Pak of 10
Vs-557D-1	(TR557D)	4 3/4" Truck Valve		.98	3.78	Blister Card of 1
Vs-557D-10	(TR557D)	4 3/4" Truck Valve		.98	3.78	Pic-Pak of 10
Vh-RG70-25	(RG70)	High Temp Silicone Grommet for TR55x Series				Pic-Pak of 25

*Add suffix "-100" for bulk box of 100.



Vh-RG70



Vs-554

Our Premium Grommet Seal Valve Stems are more forgiving than O-Rings or other similar seals. They will not leak if the hole is rough or scratched. These Grommets have a better seal all around and are much better for the wheel. It prevents corrosion and it lasts longer than your typical grommet seals. It can also handle higher temperatures and has a higher tear resistance.

TUBELESS VALVE STEMS FOR ALCOA WHEELS

SKU # *	TR #	PRODUCT DESCRIPTION	A	B	QTY
Vs-542-1	(TR542)	O-Ring Seal Valve for Alcoa Wheels w/ 9.7mm Rim Hole	32mm	-	Blister Card of 1
Vs-542-10	(TR542)	O-Ring Seal Valve for Alcoa Wheels w/ 9.7mm Rim Hole	32mm	-	Pic-Pak of 10
Vs-543-1	(TR543)	O-Ring Seal Valve for Alcoa Wheels w/ 9.7mm Rim Hole	59mm	-	Blister Card of 1
Vs-543-10	(TR543)	O-Ring Seal Valve for Alcoa Wheels w/ 9.7mm Rim Hole	59mm	-	Pic-Pak of 10
Vs-543C-1	(TR543C)	O-Ring Seal Valve 45° Bend for Alcoa Wheels w/ 9.7mm Rim Hole	24mm	35mm	Blister Card of 1
Vs-543C-10	(TR543C)	O-Ring Seal Valve 45° Bend for Alcoa Wheels w/ 9.7mm Rim Hole	24mm	35mm	Pic-Pak of 10
Vs-543D-1	(TR543D)	O-Ring Seal Valve 60° Bend for Alcoa Wheels w/ 9.7mm Rim Hole	25mm	35mm	Blister Card of 1
Vs-543D-10	(TR543D)	O-Ring Seal Valve 60° Bend for Alcoa Wheels w/ 9.7mm Rim Hole	25mm	35mm	Pic-Pak of 10
Vs-543E-1	(TR543E)	O-Ring Seal Valve 75° Bend for Alcoa Wheels w/ 9.7mm Rim Hole	25mm	35mm	Blister Card of 1
Vs-543E-10	(TR543E)	O-Ring Seal Valve 75° Bend for Alcoa Wheels w/ 9.7mm Rim Hole	25mm	35mm	Pic-Pak of 10
Vs-544-1	(TR544)	O-Ring Seal Valve for Alcoa Wheels w/ 9.7mm Rim Hole	73mm	-	Blister Card of 1
Vs-544-10	(TR544)	O-Ring Seal Valve for Alcoa Wheels w/ 9.7mm Rim Hole	73mm	-	Pic-Pak of 10
Vs-544D-1	(TR544D)	O-Ring Seal Valve 60° Bend for Alcoa Wheels w/ 9.7mm Rim Hole	25mm	49mm	Blister Card of 1
Vs-544D-10	(TR544D)	O-Ring Seal Valve 60° Bend for Alcoa Wheels w/ 9.7mm Rim Hole	25mm	49mm	Pic-Pak of 10
Vs-544E-1	(TR544E)	O-Ring Seal Valve 75° Bend for Alcoa Wheels w/ 9.7mm Rim Hole	25mm	49mm	Blister Card of 1
Vs-544E-10	(TR544E)	O-Ring Seal Valve 75° Bend for Alcoa Wheels w/ 9.7mm Rim Hole	25mm	49mm	Pic-Pak of 10
Vs-545-1	(TR545)	O-Ring Seal Valve for Alcoa Wheels w/ 9.7mm Rim Hole	89mm	-	Blister Card of 1
Vs-545-10	(TR545)	O-Ring Seal Valve for Alcoa Wheels w/ 9.7mm Rim Hole	89mm	-	Pic-Pak of 10
Vs-545D-1	(TR545D)	O-Ring Seal Valve for Alcoa Wheels w/ 9.7mm Rim Hole	25mm	66mm	Blister Card of 1
Vs-545D-10	(TR545D)	O-Ring Seal Valve for Alcoa Wheels w/ 9.7mm Rim Hole	25mm	66mm	Pic-Pak of 10
Vs-545D-250	(TR545D)	O-Ring Seal Valve for Alcoa Wheels w/ 9.7mm Rim Hole	25mm	66mm	Box of 250
Vs-545E-1	(TR545E)	O-Ring Seal Valve 75° Bend for Alcoa Wheels w/ 9.7mm Rim Hole	25mm	66mm	Blister Card of 1
Vs-545E-10	(TR545E)	O-Ring Seal Valve 75° Bend for Alcoa Wheels w/ 9.7mm Rim Hole	25mm	66mm	Pic-Pak of 10
Vs-546-1	(TR546)	O-Ring Seal Valve for Alcoa Wheels w/ 9.7mm Rim Hole	106mm	-	Blister Card of 1
Vs-546-10	(TR546)	O-Ring Seal Valve for Alcoa Wheels w/ 9.7mm Rim Hole	106mm	-	Pic-Pak of 10
Vs-546-36-1	(TR546-36)	O-Ring Seal Valve 36° Bend for Alcoa Wheels w/ 9.7mm Rim Hole	25mm	85mm	Blister Card of 1
Vs-546-36-10	(TR546-36)	O-Ring Seal Valve 36° Bend for Alcoa Wheels w/ 9.7mm Rim Hole	25mm	85mm	Pic-Pak of 10
Vs-546D-1	(TR546D)	O-Ring Seal Valve 80° Bend for Alcoa Wheels w/ 9.7mm Rim Hole	25mm	85mm	Blister Card of 1
Vs-546D-10	(TR546D)	O-Ring Seal Valve 80° Bend for Alcoa Wheels w/ 9.7mm Rim Hole	25mm	85mm	Pic-Pak of 10
Vs-546E-1	(TR546E)	O-Ring Seal Valve 75° Bend for Alcoa Wheels w/ 9.7mm Rim Hole	25mm	85mm	Blister Card of 1
Vs-546E-10	(TR546E)	O-Ring Seal Valve 75° Bend for Alcoa Wheels w/ 9.7mm Rim Hole	25mm	85mm	Pic-Pak of 10
Vs-547-1	(TR547)	O-Ring Seal Valve for Alcoa Wheels w/ 9.7mm Rim Hole	115mm	-	Blister Card of 1
Vs-547-10	(TR547)	O-Ring Seal Valve for Alcoa Wheels w/ 9.7mm Rim Hole	115mm	-	Pic-Pak of 10
Vs-547D-1	(TR547D)	O-Ring Seal Valve 80 Bend for Alcoa Wheels w/ 9.7mm Rim Hole			Blister Card of 1
Vs-547D-10	(TR547D)	O-Ring Seal Valve 80 Bend for Alcoa Wheels w/ 9.7mm Rim Hole	25mm	96mm	Pic-Pak of 10

*Add suffix "-100" for bulk box of 100.



Install the valve with care and do not over-torque; the recommended torque is 7 to 10 Ft-Lb (9 to 16 Nm.)

EURO-STYLE O-RING SEAL CLAMP-IN VALVE STEMS

SKU #	Industry #	PRODUCT DESCRIPTION	Effective Length (mm)	QTY
Vs-3201-1	(V3.20.1)	European Style O-Ring Seal Clamp-in Valve	16x41	Blister Card of 1
Vs-3201-10	(V3.20.1)	European Style O-Ring Seal Clamp-in Valve	16x41	Pic-Pak of 10
Vs-3202-1	(V3.20.2)	European Style O-Ring Seal Clamp-in Valve	16x95	Blister Card of 1
Vs-3202-10	(V3.20.2)	European Style O-Ring Seal Clamp-in Valve	16x95	Pic-Pak of 10
Vs-3203-1	(V3.20.3)	European Style O-Ring Seal Clamp-in Valve	16x82	Blister Card of 1
Vs-3203-10	(V3.20.3)	European Style O-Ring Seal Clamp-in Valve	16x82	Pic-Pak of 10
Vs-3204-1	(V3.20.4)	European Style O-Ring Seal Clamp-in Valve	16x90/27"	Blister Card of 1
Vs-3204-10	(V3.20.4)	European Style O-Ring Seal Clamp-in Valve	16x90/27"	Pic-Pak of 10
Vs-3205-1	(V3.20.5)	European Style O-Ring Seal Clamp-in Valve	16x70/27"	Blister Card of 1
Vs-3205-10	(V3.20.5)	European Style O-Ring Seal Clamp-in Valve	16x70/27"	Pic-Pak of 10
Vs-3206-1	(V3.20.6)	European Style O-Ring Seal Clamp-in Valve	16x115/27"	Blister Card of 1
Vs-3206-10	(V3.20.6)	European Style O-Ring Seal Clamp-in Valve	16x115/27"	Pic-Pak of 10
Vs-3207-1	(V3.20.7)	European Style O-Ring Seal Clamp-in Valve	16x80/27"	Blister Card of 1
Vs-3207-10	(V3.20.7)	European Style O-Ring Seal Clamp-in Valve	16x80/27"	Pic-Pak of 10
Vs-3208-1	(V3.20.8)	European Style O-Ring Seal Clamp-in Valve	16x119/12"	Blister Card of 1
Vs-3208-10	(V3.20.8)	European Style O-Ring Seal Clamp-in Valve	16x119/12"	Pic-Pak of 10
Vs-3209-1	(V3.20.9)	European Style O-Ring Seal Clamp-in Valve	16x102/12"	Blister Card of 1
Vs-3209-10	(V3.20.9)	European Style O-Ring Seal Clamp-in Valve	16x102/12"	Pic-Pak of 10
Vs-32010-1	(V3.20.10)	European Style O-Ring Seal Clamp-in Valve	16x80/28"	Blister Card of 1
Vs-32010-10	(V3.20.10)	European Style O-Ring Seal Clamp-in Valve	16x80/28"	Pic-Pak of 10
Vs-32011-1	(V3.20.11)	European Style O-Ring Seal Clamp-in Valve	16x100/27"/42"	Blister Card of 1
Vs-32011-10	(V3.20.11)	European Style O-Ring Seal Clamp-in Valve	16x100/27"/42"	Pic-Pak of 10
Vs-32012-1	(V3.20.12)	European Style O-Ring Seal Clamp-in Valve	16x100/27"	Blister Card of 1
Vs-32012-10	(V3.20.12)	European Style O-Ring Seal Clamp-in Valve	16x100/27"	Pic-Pak of 10



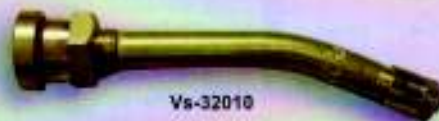
Vs-3209



Vs-3202



Vs-3207



Vs-32010



Vs-3203



Vs-32011



Vs-3204



Vs-32012



Vs-3206

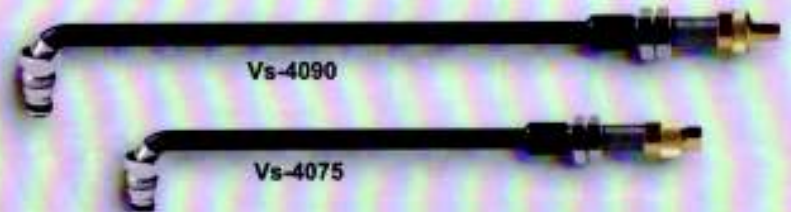


Vs-3201



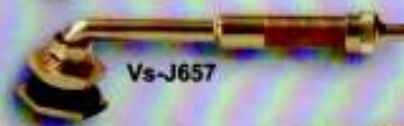
Vs-3208

SKU #	TR #	Horizontal Length & Bend	QTY
Vs-4075-1	J4000-7.50	7 1/2", 191mm, 90° Bend	1
Vs-4075-5	J4000-7.50	7 1/2", 191mm, 90° Bend	Box of 5
Vs-4090-1	J4000-9	9", 229mm, 90° Bend	1
Vs-4090-5	J4000-9	9", 229mm, 90° Bend	Box of 5



All Measurements are in Millimeters (mm)

SKU #	TR #	Degree of Bend	A	B	QTY
Vs-J650-1	TRJ650-03	80° Bend	27	79	Blister Card of 1
Vs-J650-5	TRJ650-03	80° Bend	27	79	Pic-Pak of 5
Vs-J650C-1	J650C	80° Bend	27	79	Blister Card of 1
Vs-J650C-5	J650C	80° Bend	27	79	Pic-Pak of 5
Vs-J651-1	J651	90° Bend	32	119	Blister Card of 1
Vs-J651-5	J651	90° Bend	32	119	Pic-Pak of 5
Vs-J652-1	J652	86° Bend	27	140	Blister Card of 1
Vs-J652-5	J652	86° Bend	27	140	Pic-Pak of 5
Vs-J653-1	J653	80° Bend	27	64	Blister Card of 1
Vs-J653-5	J653	80° Bend	27	64	Pic-Pak of 5
Vs-J654-1	J654	74° Bend	27	79	Blister Card of 1
Vs-J654-5	J654	74° Bend	27	79	Pic-Pak of 5
Vs-J655-1	J655	74° Bend	24	79	Blister Card of 1
Vs-J655-5	J655	74° Bend	24	79	Pic-Pak of 5
Vs-J656-1	J656	90° Bend	67	94	Blister Card of 1
Vs-J656-5	J656	90° Bend	67	94	Pic-Pak of 5
Vs-J657-1	J657	80° Bend	27	102	Blister Card of 1
Vs-J657-5	J657	80° Bend	27	102	Pic-Pak of 5
Vs-J658-1	J658	80° Bend	27	140	Blister Card of 1
Vs-J658-5	J658	80° Bend	27	140	Pic-Pak of 5
Vs-J659-1	J659	90° Bend	48	89	Blister Card of 1
Vs-J659-5	J659	90° Bend	48	89	Pic-Pak of 5
Vs-J660-1	J660	90° Bend	48	222	Blister Card of 1
Vs-J660-5	J660	90° Bend	48	222	Pic-Pak of 5
Vs-J669-1	J669	90° Bend	27	64	Blister Card of 1
Vs-J669-5	J669	90° Bend	27	64	Pic-Pak of 5
Vs-J670-1	J670	Straight	-	-	Blister Card of 1
Vs-J670-5	J670	Straight	-	-	Pic-Pak of 5
Vs-J670-100	J670	Straight	-	-	Bulk Box of 100
Vh-SP2-1	SP2		-	-	Blister Card of 1
Vh-SP2-5	SP2		-	-	Pic-Pak of 5
Vh-SP2-100	SP2		-	-	Box of 100



AIR/LIQUID VALVE STEMS



Vs-618* Vs-618S Vh-CH1* Vh-CH3* Vs-218 Non-Adhesive Backing



Vs-622A** Vs-621A** Vs-623A**

SKU #	PRODUCT DESCRIPTION	QTY
Vs-218-1	Tube Type Fast Flow Air Liquid Tractor Valve with Plastic Cap	Each
Vs-218-5	Tube Type Fast Flow Air Liquid Tractor Valve with Plastic Cap	Pkg of 5
Vs-618-1*	Tubeless Fast Flow Air / Liquid Tractor Valve	Blister Card of 1
Vs-618-5*	Tubeless Fast Flow Air / Liquid Tractor Valve	Pkg of 5
Vs-618S-2	Snap-in Air Liquid Fast Flow Valve Stem	Blister Card of 2
Vs-618S-10	Snap-in Air Liquid Fast Flow Valve Stem	Pic-Pak of 10
Vs-621A-1**	Air/Liquid Tubeless Clamp-In Valves for Off-Road Vehicles 65°	Blister Card of 1
Vs-621A-5**	Air/Liquid Tubeless Clamp-In Valves for Off-Road Vehicles 65°	Pic-Pak of 5
Vs-622A-1**	Air/Liquid Tubeless Clamp-In Valves for Off-Road Vehicles 90°	Blister Card of 1
Vs-622A-5**	Air/Liquid Tubeless Clamp-In Valves for Off-Road Vehicles 90°	Pic-Pak of 5
Vs-623A-1**	Air/Liquid Tubeless Clamp-In Valves for Off-Road Vehicles 65°	Blister Card of 1
Vs-623A-5**	Air/Liquid Tubeless Clamp-In Valves for Off-Road Vehicles 65°	Pic-Pak of 5
Vh-CH1-1*	Core Housing (Old Style)	Blister Card of 1
Vh-CH1-5*	Core Housing (Old Style)	Pic-Pak of 10
Vh-CH3-1*	Core Housing (New Style)	Blister Card of 1
Vh-CH3-5*	Core Housing (New Style)	Pic-Pak of 10

*Selected Products also come in Bulk Packages of 100.

**Recommended Torque for installation is 45-75 inch-pounds. **Product comes with Vh-CH3 Core Housing

EURO-STYLE CLAMP-IN

Measurements shown in table are in millimeters (mm).

Effective length is determined by measuring from the center of the valve to the end (with cap removed) of the valve.



SKU #	PRODUCT DESCRIPTION	RIM HOLE	A	B	C	α°	β°	Eff. Length	QTY
Vs-3122-1	(V3.12.2) European Style Brass Clamp-In Valve	15.7mm	95	--	--	--	--	95mm	Each
Vs-3131-1	(V3.13.1) European Style Brass Clamp-In Valve	20.5mm	46.5	42.5	--	153°	--	83mm	Each
Vs-3132-1	(V3.13.2) European Style Brass Clamp-In Valve	20.5mm	30	28	--	126°	--	50mm	Each
Vs-3141-1	(V3.14.1) European Style Brass Clamp-In Valve	20.5mm	26	21.5	24.5	147°	147°	70mm	Each
Vs-3142-1	(V3.14.2) European Style Brass Clamp-In Valve	20.5mm	45	21.5	24.5	147°	147°	85mm	Each
Vs-3143-1	(V3.14.3) European Style Brass Clamp-In Valve	20.5mm	37	21.5	24.5	147°	147°	80mm	Each
Vs-3151-1	(V3.15.1) European Style Brass Clamp-In Valve	20.5mm	22.5	44.5	--	110°	--	43mm	Each
Vs-3152-1	(V3.15.2) European Style Brass Clamp-In Valve	20.5mm	15.5	44.5	--	95°	--	43mm	Each
Vs-3161-1	(V3.16.1) European Style Brass Clamp-In Valve	20.5mm	36	29	--	150°	--	62mm	Each
Vs-3171-1	(V3.17.1) European Style Brass Clamp-In Valve	20.5mm	99	31.5	--	172°	--	127mm	Each
Vs-3172-1	(V3.17.2) European Style Brass Clamp-In Valve	20.5mm	116	31.5	--	172°	--	142mm	Each
Vs-3181-1	(V3.18.1) European Style Brass Clamp-In Valve	20.5mm	64	21.5	24.5	146°	146°	110mm	Each
Vs-3182-1	(V3.18.2) European Style Brass Clamp-In Valve	20.5mm	81	21.5	24.5	146°	146°	126mm	Each
Vs-3184-1	(V3.18.4) European Style Brass Clamp-In Valve	20.5mm	51	21.5	37.5	138°	138°	107mm	Each
Vs-3185-1	(V3.18.5) European Style Brass Clamp-In Valve	20.5mm	68	21.5	37.5	138°	138°	122mm	Each
Vs-3191-1	(V3.19.1) European Style Brass Clamp-In Valve	20.5mm	92	21.5	24.5	147°	154°	135mm	Each
Vs-3192-1	(V3.19.2) European Style Brass Clamp-In Valve	20.5mm	76	21.5	24.5	145°	152°	123mm	Each
Vs-3193-1	(V3.19.3) European Style Brass Clamp-In Valve	20.5mm	91	21.5	24.5	155°	162°	136mm	Each



V3.12 Series



v3.13 Series



v3.14 Series



V3.15 Series



v3.16 Series



V3.17 Series



V3.18 Series



V3.19 Series

MICHELIN SINGLE BEND

All Measurements are in Millimeters (mm).

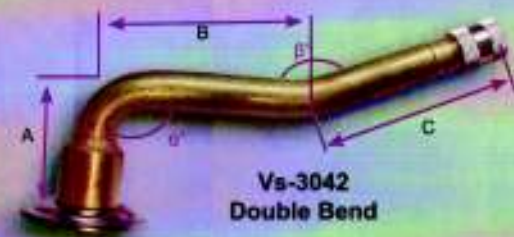
SKU #	PRODUCT DESCRIPTION	A	B	α°	QTY
Vs-3022	(V3.02.2) Michelin Single Bend Tube Valve	22.5	43	120°	Each
Vs-3023	(V3.02.3) Michelin Single Bend Tube Valve	33	44.5	95°	Each
Vs-3024	(V3.02.4) Michelin Single Bend Tube Valve	39.5	44.5	110°	Each
Vs-3025	(V3.02.5) Michelin Single Bend Tube Valve	20.5	47.5	90°	Each
Vs-3027	(V3.02.7) Michelin Single Bend Tube Valve	20.5	71.5	100°	Each
Vs-3028	(V3.02.8) Michelin Single Bend Tube Valve	20.5	89.5	94°	Each
Vs-3029	(V3.02.9) Michelin Single Bend Tube Valve	20.5	99.5	94°	Each
Vs-30210	(V3.02.10) Michelin Single Bend Tube Valve	20.5	115	94°	Each
Vs-30211	(V3.02.11) Michelin Single Bend Tube Valve	20	126	98°	Each
Vs-30212	(V3.02.12) Michelin Single Bend Tube Valve	20.5	132	94°	Each
Vs-30213	(V3.02.13) Michelin Single Bend Tube Valve	20.5	133.5	90°	Each
Vs-30214	(V3.02.14) Michelin Single Bend Tube Valve	20.5	138.5	94°	Each
Vs-30215	(V3.02.15) Michelin Single Bend Tube Valve	20.5	145.5	94°	Each
Vs-30216	(V3.02.16) Michelin Single Bend Tube Valve	20.5	149.5	90°	Each
Vs-30217	(V3.02.17) Michelin Single Bend Tube Valve	20.5	156.5	90°	Each
Vs-30218	(V3.02.18) Michelin Single Bend Tube Valve	22.5	74.5	90°	Each
Vs-30219	(V3.02.19) Michelin Single Bend Tube Valve	20.5	60	94°	Each
Vs-30223	(V3.02.23) Michelin Single Bend Tube Valve	29.5	66.5	90°	Each
Vs-30224	(V3.02.24) Michelin Single Bend Tube Valve	20.5	117	90°	Each
Vs-30227	(V3.02.27) Michelin Single Bend Tube Valve	20	75	94°	Each



MICHELIN DOUBLE BEND

All Measurements are in Millimeters (mm).

SKU #	PRODUCT DESCRIPTION	A	B	C	α°	β°	QTY
Vs-3041	(V3.04.1) Michelin Double Bend Tube Valve	20.5	32	37	90°	138°	Each
Vs-3042	(V3.04.2) Michelin Double Bend Tube Valve	20.5	38	41.5	90°	153°	Each
Vs-3043	(V3.04.3) Michelin Double Bend Tube Valve	20	59	38.5	94°	163°	Each
Vs-3044	(V3.04.4) Michelin Double Bend Tube Valve	20	74	40	94°	144°	Each
Vs-3045	(V3.04.5) Michelin Double Bend Tube Valve	20	76	47.5	90°	153°	Each
Vs-3046	(V3.04.6) Michelin Double Bend Tube Valve	20	86	47.5	90°	153°	Each
Vs-3047	(V3.04.7) Michelin Double Bend Tube Valve	20.5	30.5	38	90°	154°	Each
Vs-3048	(V3.04.8) Michelin Double Bend Tube Valve	20.5	38.5	43	90°	167°	Each
Vs-30410	(V3.04.10) Michelin Double Bend Tube Valve	20.5	47	53	90°	154°	Each
Vs-30411	(V3.04.11) Michelin Double Bend Tube Valve	20.5	47	63.5	90°	154°	Each
Vs-30415	(V3.04.15) Michelin Double Bend Tube Valve	20.5	42	38.5	90°	120°	Each
Vs-30417	(V3.04.17) Michelin Double Bend Tube Valve	20	65	45	90°	160°	Each
Vs-30418	(V3.04.18) Michelin Double Bend Tube Valve	20	72	45	90°	160°	Each
Vs-30421	(V3.04.21) Michelin Double Bend Tube Valve	20	83	57	94°	154°	Each
Vs-30422	(V3.04.22) Michelin Double Bend Tube Valve	20	28	47	94°	164°	Each
Vs-30423	(V3.04.23) Michelin Double Bend Tube Valve	20	46	47	94°	164°	Each
Vs-30424	(V3.04.24) Michelin Double Bend Tube Valve	20	58	47	90°	164°	Each
Vs-30425	(V3.04.25) Michelin Double Bend Tube Valve	20	80	47	94°	164°	Each
Vs-30426	(V3.04.26) Michelin Double Bend Tube Valve	20	99	42	99°	189°	Each

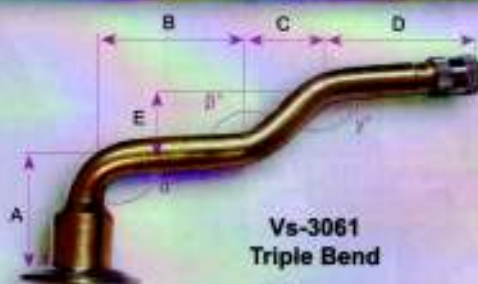


MICHELIN SCREW-ON TUBE VALVE STEMS

MICHELIN TRIPLE BEND

All Measurements are in Millimeters (mm).

SKU #	PRODUCT DESCRIPTION	A	B	C	D	E	α°	β°	γ°	QTY
Vs-3061	(V3.06.1) Michelin Triple Bend Tube Valve	20.5	30.5	19.5	35.5	17	90°	139°	139°	Each
Vs-3062	(V3.06.2) Michelin Triple Bend Tube Valve	20.5	44.5	12	37.5	17	90°	128°	125°	Each
Vs-3063	(V3.06.3) Michelin Triple Bend Tube Valve	20.5	46	20.5	47.5	17	90°	140°	140°	Each
Vs-3065	(V3.06.5) Michelin Triple Bend Tube Valve	20.5	62.5	19.5	49	17	90°	139°	139°	Each
Vs-3066	(V3.06.6) Michelin Triple Bend Tube Valve	20	79.5	19.5	37.5	17	90°	139°	139°	Each
Vs-3067	(V3.06.7) Michelin Triple Bend Tube Valve	20.5	45.5	18.5	42.5	17	90°	137°	137°	Each
Vs-3068	(V3.06.8) Michelin Triple Bend Tube Valve	24.5	61.5	14.5	50.5	7.5	94°	153°	153°	Each
Vs-3069	(V3.06.9) Michelin Triple Bend Tube Valve	20.5	67.5	19.5	54.5	17	90°	139°	139°	Each
Vs-30612	(V3.06.12) Michelin Triple Bend Tube Valve	23.5	71.5	19.5	25.5	11.5	90°	150°	150°	Each
Vs-30614	(V3.06.14) Michelin Triple Bend Tube Valve	20	50	13	40	7	94°	153°	153°	Each
Vs-30615	(V3.06.15) Michelin Triple Bend Tube Valve	20	60	13	40	7	94°	153°	153°	Each
Vs-30616	(V3.06.16) Michelin Triple Bend Tube Valve	20	62	13	50	7	94°	153°	153°	Each
Vs-30617	(V3.06.17) Michelin Triple Bend Tube Valve	20	75	13	50	7	94°	153°	153°	Each



HARDWARE FOR MICHELIN SCREW-ON VALVE STEMS

SKU #	PRODUCT DESCRIPTION	QTY
Vh-3082-1	(V3.08.2) Rubber Tube Spud (70mm)	Each
Vh-3083-1	(V3.08.3) Rubber Tube Spud (80mm)	Each
Vh-3084-1	(V3.08.4) Rubber Tube Spud (57mm)	Each
Vh-9051-2	Rubber Washer for Universal Brass Tube Valves	Bag of 2



Vh-3083



Vh-3082



Vh-3084



Vh-9051

SKU #	PRODUCT DESCRIPTION	QTY
Ve-336-2	1/2" Plastic Valve Extension	Blister Card of 2
Ve-336-50	1/2" Plastic Valve Extension	Pic-Pak of 50
Ve-336-100	1/2" Plastic Valve Extension	Box of 100
Ve-341-2	3/4" Plastic Valve Stem Extension	Blister Card of 2
Ve-341-40	3/4" Plastic Valve Stem Extension	Pic-Pak of 40
Ve-341-100	3/4" Plastic Valve Stem Extension	Box of 100
Ve-342-2	1 1/4" Plastic Valve Stem Extension	Blister Card of 2
Ve-342-25	1 1/4" Plastic Valve Stem Extension	Pic-Pak of 25
Ve-342-100	1 1/4" Plastic Valve Stem Extension	Box of 100
Ve-343-4	1 1/2" Plastic Valve Stem Extension	Blister Card of 4
Ve-343-20	1 1/2" Plastic Valve Stem Extension	Pic-Pak of 20
Ve-343-100	1 1/2" Plastic Valve Stem Extension	Box of 100
Ve-336M-4	1/2" (13mm) Metal Extension	Blister Card of 4
Ve-336M-25	1/2" (13mm) Metal Extension	Pic-Pak of 25
Ve-341D-25	"SealRite" Double Seal Valve Cap, 3/4" (19mm) effective length	Pic-Pak of 25
Ve-341D-100	"SealRite" Double Seal Valve Cap, 3/4" (19mm) effective length	Bag of 100
Ve-341M-4	3/4" (19mm) Metal Extension	Blister Card of 4
Ve-341M-25	3/4" (19mm) Metal Extension	Pic-Pak of 25
Ve-342M-4	1 1/4" (32mm) Metal Extension	Blister Card of 4
Ve-342M-25	1 1/4" (32mm) Metal Extension	Pic-Pak of 25
Ve-DW7	7" (18 Cm) EPDM Rubber Valve Extension w/Clamp for Dual Wheels	Blister Card of 1
Ve-DW9	9" (23 Cm) EPDM Rubber Valve Extension w/Clamp for Dual Wheels	Blister Card of 1
Ve-DW11	11" (28 Cm) EPDM Rubber Valve Extension w/Clamp for Dual Wheels	Blister Card of 1

SEALRITE!

DOUBLE SEAL VALVE CAP



Ve-341D - "SealRite" Double Seal Valve Cap features:

- 3/4" (19mm) effective length
- Inflate, deflate or check air pressure directly through the Ve-341D
- No removal needed, so it won't get lost.
- No need to add an additional cap--it IS a cap!
- Heat-resistant grommets give extra protection for performance in high-temperature settings.
- Cap seals like a high-pressure cap and can be used like a valve extension.
- The exterior seal is stronger than some of our competitors to prevent dirt from entering from the outside.



Recreational Vehicle Dual Wheel Extension with flexible hose. Provides easy access to the inner rear tire on campers, recreational vehicles and light trucks. Also useful for fitting to spare wheels that are often difficult to access when checking the pressure. Fits standard valve cap threads. Clamp is easily secured to rim cut out.



Metal heavy duty valve extensions fit most applications, extending the length of the valve stem needed for many types of wheels. Allows the inflation/deflation and checking of the air pressure through the metal extension. (Also know as Inflate through cap.)



Sturdy plastic valve extensions fit most applications, extending the length of the valve stem needed for many types of wheels. Allows the inflation/deflation and checking of the air pressure through the plastic extension. (Also know as Inflate through cap.)



Vc-114G Vc-114R Vc-114Y



Vc-124B Vc-124P Vc-124R Vc-124Y



Vc-134B Vc-134G Vc-134P Vc-134R Vc-134Y



Vc-337* Vc-338 Vc-339 Vc-340

*Vc-337- Dome Valve Cap includes Heat Resistant Gasket.



Vc-341 Vc-342 Vc-345 Vc-346



Vc-349 Vc-350 Vc-400

Avoid clutter and disorganization! We recommend our Pic-Pak Inventory Management System to keep your inventory protected and organized.

SKU #	PRODUCT DESCRIPTION	QTY
Vc-114G-4	Bullet Style Metal Cap (Green) (Nitrogen Identification)	Blister Card of 4
Vc-114G	Bullet Style Metal Cap (Green) (Nitrogen Identification)	Pic-Pak of 60
Vc-114R-4	Bullet Style Metal Cap (Red)	Blister Card of 4
Vc-114R	Bullet Style Metal Cap (Red)	Pic-Pak of 60
Vc-114Y-4	Bullet Style Metal Cap (Yellow)	Blister Card of 4
Vc-114Y	Bullet Style Metal Cap (Yellow)	Pic-Pak of 60
Vc-124B-4	Domed, Ribbed Black Metal Valve Cap	Blister Card of 4
Vc-124B	Domed, Ribbed Black Metal Valve Cap	Pic-Pak of 100
Vc-124P-4	Domed, Ribbed Purple Metal Valve Cap	Blister Card of 4
Vc-124P	Domed, Ribbed Purple Metal Valve Cap	Pic-Pak of 100
Vc-124R-4	Domed, Ribbed Red Metal Valve Cap	Blister Card of 4
Vc-124R	Domed, Ribbed Red Metal Valve Cap	Pic-Pak of 100
Vc-124Y-4	Domed, Ribbed Yellow Metal Valve Cap	Blister Card of 4
Vc-124Y	Domed, Ribbed Yellow Metal Valve Cap	Pic-Pak of 100
Vc-134B-4	Hex Style Blue Metal Valve Cap	Blister Card of 4
Vc-134B	Hex Style Blue Metal Valve Cap	Pic-Pak of 100
Vc-134G-4	Hex Style Green Metal Valve Cap (Nitrogen Identification)	Blister Card of 4
Vc-134G	Hex Style Green Metal Valve Cap (Nitrogen Identification)	Pic-Pak of 100
Vc-134P-4	Hex Style Purple Metal Valve Cap	Blister Card of 4
Vc-134P	Hex Style Purple Metal Valve Cap	Pic-Pak of 100
Vc-134R-4	Hex Style Red Metal Valve Cap	Blister Card of 4
Vc-134R	Hex Style Red Metal Valve Cap	Pic-Pak of 100
Vc-134Y-4	Hex Style Yellow Metal Valve Cap	Blister Card of 4
Vc-134Y	Hex Style Yellow Metal Valve Cap	Pic-Pak of 100
Vc-337-5	Nickel-Plated Brass Tire Valve Cap	Blister Card of 5
Vc-337-100	Nickel-Plated Brass Tire Valve Cap	Pic-Pak of 100
Vc-338-4	Valve Cap with Core Tool (Brass)	Blister Card of 4
Vc-338	Valve Cap with Core Tool (Brass)	Pic-Pak of 50
Vc-339-4	Valve Cap with Core Tool (Nickel)	Blister Card of 4
Vc-339	Valve Cap with Core Tool (Nickel)	Pic-Pak of 50
Vc-340-5	Plastic Tire Valve Cap (standard OEM with "O" ring)	Blister Card of 5
Vc-340-100	Plastic Tire Valve Cap (standard OEM with "O" ring)	Pic-Pak of 100
Vc-341-5	Chrome Valve Cap, Hex w/ Dome Type w/ O-Ring Seal	Blister Card of 5
Vc-341-100	Chrome Valve Cap, Hex w/ Dome Type w/ O-Ring Seal	Pic-Pak of 100
Vc-342-5	Chrome Valve Cap, Hex Type w/ O-Ring Seal	Blister Card of 5
Vc-342-100	Chrome Valve Cap, Hex Type w/ O-Ring Seal	Pic-Pak of 100
Vc-345-100	Green Plastic Tire Valve Cap (Nitrogen Identification)	Pic-Pak of 100
Vc-346-5	Gray Plastic Tire Valve Caps	Blister Card of 5
Vc-346-100	Gray Plastic Tire Valve Caps	Pic-Pak of 100
Vc-349-4	Brass Valve Cap with Core Tool & Cap	Blister Card of 4
Vc-349	Brass Valve Cap with Core Tool & Cap	Pic-Pak of 50
Vc-350-4	Plastic Valve Cap, Black, Agriculture	Blister Card of 4
Vc-350	Plastic Valve Cap, Black, Agriculture	Pic-Pak of 50
Vc-400-4	TPMS Plastic Valve Cap - Black with inner seal	Blister Card of 4
Vc-400-50	TPMS Plastic Valve Cap - Black with inner seal	Pic-Pak of 50

