

TIRE REPAIR KITS

Kt-340 - PASSENGER CAR



Our Passenger Car Tire Repair Kit is one of our most popular! This kit includes: T-Bone Handle with Spiral Probe, T-Bone Handle with 4" Open-Eye Needle, Screwdriver with Reversible Shaft for Phillips and Flat Head and a Valve Core Tool, Hex Wrench, Specially Formulated Lubricant, Razor Blade (for cutting excess repairs), 20 4" Large Diameter Repairs, and 20 4" Small Diameter Repairs. Our Sharp, Black Case is Industrial Strength, and comes with 2 Slide Locks instead of the standard snap lock. As with all of our kits and repairs, these are **PERMANENT** repairs and are guaranteed for the life of the tire. Never get stranded again with BlackJack's **Kt-340** Passenger Car Tire Repair Kit!

See page 10 for additional repairs.

Kt-103 / Kt-104 - ATV



Our new ATV Tire Repair Kit is a perfect addition to any outdoors-man, farmer, or homeowner. This kit includes: Easy Grip T-Handle with Open-Eye Needle, Folding Razor Blade, 4 16 gram CO² Canisters, Compact On/Off CO² Air Flow Valve, Compact Tire Pressure Gauge, and 10x 4" Large Diameter Repairs. This kit is great for any tubeless tire and with the handy travel pouch, you can take it anywhere. Comes in a Blister Package and Cases of 16.



When closed, kit measures roughly 4.5" x 5.5".

Kt-340P - PASSENGER CAR - PINK

Same Great Passenger Car Tire Repair Kit, Just with a little style. The **Kt-340p** is the same above kit, just with a Pink Case instead of Black and with a traditional snap lock.



Kt-200 - DALE EARNHARDT JR.



While Supplies Last

For all those NASCAR® and Dale Earnhardt Jr. fans out there, we have a kit just for you! Complete with Full Color image on top and on the inside of the case. The case is a very classy aluminum case and includes all your typical tire repair needs. Includes 40 tire repairs.

PROFESSIONAL GRADE PERMANENT TIRE REPAIR



Custom-molded heavy duty case built to withstand the harshest conditions

Industrial strength latches

2 T-BONE[®] handles with solid steel core and durable rubber grip

Repair needle to insert the repair plus extra needle

Spiral probe for cleaning the injury

20 large and 20 small diameter repairs

Steel hex wrench for easily replacing probe or needle

Conforms to the shape of any injury

SEE HOW



IT WORKS!

BlackJack seals the injury completely through the tire locking out moisture



TIRE REPAIR KITS

Kt-335 - TRUCK



This Truck Tire Repair Kit includes: T-Bone Handle with Spiral Probe, T-Bone Handle with 6" Open-Eye Needle, Spare 6" Open-Eye Needle, Screwdriver with Reversible Shaft for Phillips and Flat Head and a Valve Core Tool, Hex Wrench, Specially Formulated Lubricant, Razor Blade (for cutting excess repairs), 20 6" Small Diameter Repairs, and 15 6" Large Diameter Repairs. All in an Industrial Strength Gray colored Molded Case with two Slide Locks. Don't be caught on the side of the road while on the job, use the Kt-335 to repair your truck tires, **PERMANENTLY**. Our Self Vulcanizing Repairs are permanent and are guaranteed for the life of the tire. Enjoy the open road without worrying about that dreaded flat tire that you know is going to happen.

See page 10 for additional repairs.

Kt-335P - TRUCK - PINK



Same Great Truck Tire Repair Kit, Just with a little style. The Kt-335p is the same above kit, just with a Pink Case instead of Gray.

Kt-330 - MULTI-USE



This Multi-Use Tire Repair Kit includes: 2 T-Bone Handles (Probe and Needle), Lube, Razor, Screwdriver, Hex Wrench, 10 4" Large Repairs, 10 4" Small Repairs, and 10 6" Small Repairs.

Kt-220 - SPORT



These Tire Repair Kits come in the same type of Industrial Strength Cases, but in a smaller package. They both come with roughly the same tools, except the Kt-220 comes with exclusive BlackJack Sport Handle, which are similar to that of the T-Bone handles, just smaller. Each kit comes with a Spiral Probe, an Open-Eye Needle, a Razor Blade, our Specially Formulated Lubricant, 20 4" Large Diameter Repairs, and an Easy-to-Use Full Color Instruction Card, which allows ANYONE to repair a tire in no time flat!

Kt-20S - COMPACT



T-Bone Handle with 4" Open-Eye Needle (See Page 9).

REPLACEMENT HANDLES



Solid Steel Inner Core

Durable Soft Rubber Grip with Honeycomb Styling

Exclusive BlackJack Yellow Easy-Grip T-Bone Handle

Set Screw for Interchanging Probes and Needles



Th-204 T-Bone Handle w/ 4" Open-Eye Needle



Th-202 T-Bone Handle w/ Spiral Probe



Th-302 Sport Handle w/ Spiral Probe



Th-304 Sport Handle w/ 4" Open-Eye Needle



Th-112 Plastic Handle w/ Spiral Probe



Th-114 Plastic Handle w/ 4" Open-Eye Needle

ADDITIONAL PARTS



*Rn-236 - 6" Open-Eye Needle and Rn-235 - 8" Open-Eye Needle Not Pictured

Rn-230 - Spiral Probe (Old Style)
*Rn-234 - 4" Open-Eye Needle



Sd-100 Screwdriver w/ Reversible Blade and Valve Tool

Also Available in Bulk Pack of 100 Sd-100-100



Rn-250 Diamond Cut "Easy-In" Probe w/ Titanium Coating Easily Screws into any small injury to detect direction and clean the injury.



Lb-850 - BlackJack Repair Lube Also Available in Sleeve of 12 Lb-850-12



KIT REPAIR REFILLS

BlackJack's Tire Repairs are manufactured using TWELVE strands of high-tensile Kevlar fiber, the same materials used in bullet-proof vests. Many competitors use cotton or polyester fiber and with as few as seven strands. Each BlackJack strand of fiber is individually impregnated with live butyl rubber. This compound is developed using carbon black, giving the repair its black color, making the repair almost invisible in the tire. BlackJack Repairs conform to the size and shape of the injury, sealing out moisture and dirt, eliminating stress to the belts and preserving the tire integrity. This is the reason that BlackJack Tire Repairs are a PERMANENT repair. *Large repairs are 6mm in diameter and Small repairs are 4mm in diameter.*

4 INCH REFILLS



Re-435 (Box of 35) Large Dia.



Re-450 (Box of 50) Large Dia.



Re-460 (Box of 60) Large Dia.



Re-480 (Box of 80) Small Dia.

8 INCH REFILLS

6 INCH REFILLS



Re-830 (Box of 30) Large Dia.



Re-645 (Box of 45) Small Dia.



Re-640 (Box of 40) Large Dia.

12 INCH REFILLS



Re-1220 (Box of 20) Large Dia.



Re-1225 (Box of 25) Small Dia.

4 INCH CHEMICAL VULCANIZING REFILLS



Re-945 (Box of 45) Small Dia.



Re-940 (Box of 40) Large Dia.

Re-430 (Blister Card of 30) Large Dia. 4" Repairs



PAINT STICKS



Mk-510 - 1/2" White Paint Marker (Hex) Pack of 2 or 12



Mk-511 - 1/2" Yellow Paint Marker (Hex) Pack of 2 or 12

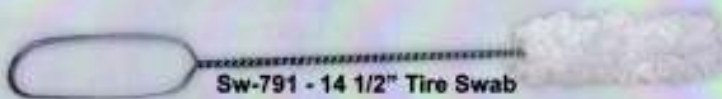


Mk-515 - 3/4" White Paint Marker (Round) Pack of 1 or 12

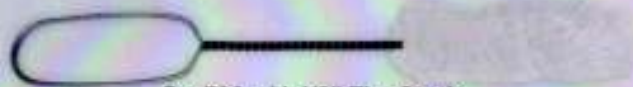
SWABS AND BRUSHES



Sw-795 - 8 1/2" Applicator Brush w/ Wooden Handle



Sw-791 - 14 1/2" Tire Swab



Sw-790 - 11 1/2" Tire Swab



Sw-900 - Red Plastic Swab Bucket with Straight Neck



Sw-910 - Red Plastic Swab Bucket with Angled Neck

PROFESSIONAL TOOLS



Ga-705 - Tire Tread Depth Gauge

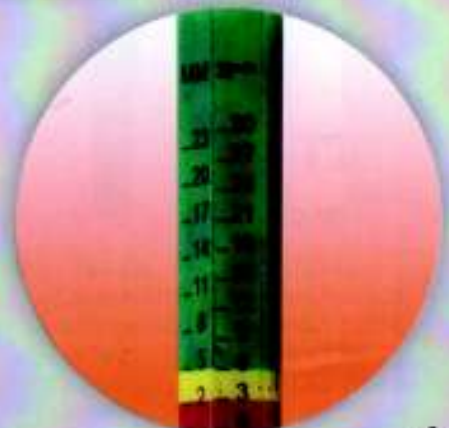


Rz-720 - Box Cutter



Rz-710 Box of 100 Razors

The Tire Tread Depth Gauge allows you to determine the tire tread depth without the guess work. Green means your tire has plenty of tread left. Yellow means the tire may need to be replaced. And Red means the tire is unsafe and needs to be replaced.





Bu-099
Buffing Dome 1.9"
(50mm) with
Bu-092 Adapter
(Bronze Coarse Grit)

Bu-098
Buffing Dome 1.9"
(50mm) with
Bu-092 Adapter
(Black Fine Grit)



Scan QR Code for Buffing Dome Demo Video.

Use our Professional Grade Buffers to buff the surface of a tire before cement application. Buffing Wheels work best assembled as shown below. Bu-091, Bu-094, Bu-098, and Bu-099 can use either the Bu-092 or Bu-093 adapters. Made of High Quality Steel and Carbide Materials.



Bu-092
Quick Change
Short Adapter
3/8" x 24
threads



Bu-093
Drill Arbor for
Buffing Wheel,
1/4"



Bu-091
65mm Coarse Grit
Buffing Wheel
(w/ Bu-092)

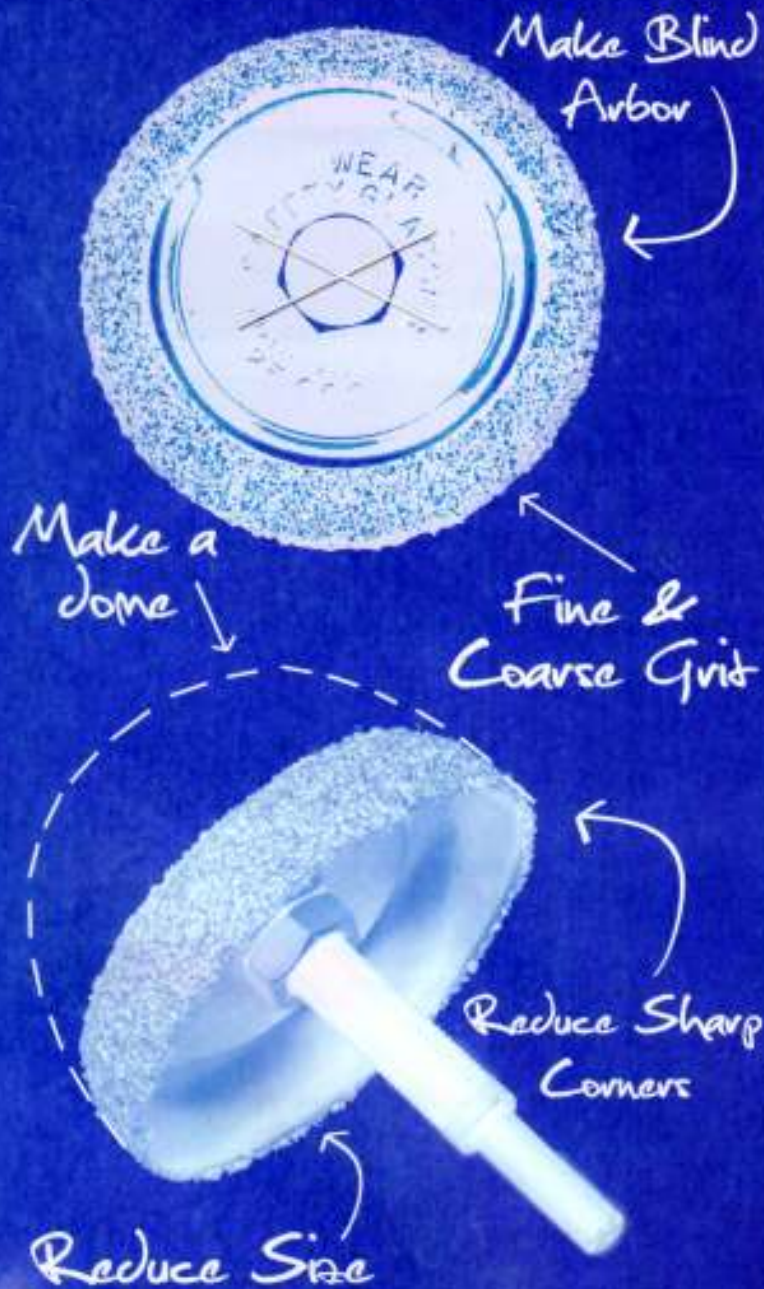


Bu-094
Buffing Wheel 2
1/2" Dia. 1/4" Hole



Bu-095
Dual-Sided Buffing
Wheel and Arbor
(w/ Bu-093)

WITH SO MANY THINGS
WRONG.....



**STANDARD
BUFFING WHEEL**

WE DECIDED TO REINVENT
THE WHEEL...

BLACK JACK 

**CARBIDE
BUFFING DOME**



BUFFING MADE EASY!



BUFF AT ANY ANGLE

Watch our
Buffing
Dome in
Action



Our carbide buffing dome eliminates the danger caused by stone buffing wheels and allows one continuous radius making buffing easy. You can buff faster and at any angle without the worry of buffing into the tire cords. For years to come we hope you will appreciate our quality and help spread our good reputation.

Another quality product engineered by BlackJack

**Ga-102
Tire Injury Measure
Tool**

This tool has a black handle with colored markings on the probe to measure injuries. Insert the tool into the injury and use the chart above to find the proper repairs and carbide cutters.

COLOR	Carbide Cutter Needed	Combi-Units Needed	Capatible Sizes
BLUE	Cc-032	Cu-203/Cu-303/Cu-503/Cu-604	1/8" (3mm), 4mm
YELLOW	Cc-032	Cu-203/Cu-303/Cu-503/Cu-604	1/8" (3mm), 4mm
RED	Cc-033	Cu-206/Cu-306/Cu-506/Cu-605/Cu-708	1/4" (6mm), 3/8" (10mm)
GREEN	Cc-033	Cu-210/Cu-310/Cu-608/Cu-710	1/4" (6mm), 3/8" (10mm)
ORANGE	Cc-034	Cu-211/Cu-711	7/16" (11mm)



Kn-220 - Rigid, Tapered Skiving Knife with Wooden Handle



Kn-210 - Flexible Skiving Knife with Wooden Handle



Kn-200 - Curved Skiving Knife with Wooden Handle



St-399 - Wooden Handled Stitcher (Ball Bearing Roller)



Sc-392 - Plastic Handled Liner Scraper



St-398 - Combination Buffer Stitcher (Stainless Steel)



Sc-395 - Inner Liner Scraper (Saw Type)



Cc-032 - 1/8" (3mm) Dia. Carbide Cutter



Cc-032L - 1/8" (3mm) Dia. Tapered Carbide Cutter (2 1/8" Long)



Cc-033 - 1/4" (6mm) Dia. Carbide Cutter



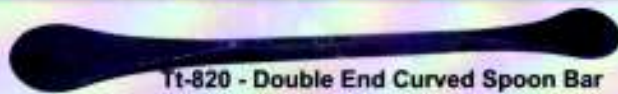
Cc-034 - 3/8" (10mm) Dia. Carbide Cutter

These Carbide Cutters are essential for removing damaged steel belts. Use the different sizes for different injuries. Attach them to a drill and use them to clean out the injury so the repair can adhere to it properly. If the injury is not cleaned out, dirt and moisture could find its way into the injury and cause the repair to fail.

For capatible repair sizes, see chart at top of this page.

MOUNTING AND DEMOUNTING TOOLS

TIRE SPOONS



Tt-820 - Double End Curved Spoon Bar
5/8" Dia. 16" Long



Tt-828 - Doubled End Curved Spoon Bar
3/4" Dia. 25" Long



Tt-824 - Leverage Bar with Spoon End
1 1/16" Dia 26" Long



Tt-830 - Double End Curved Spoon Bar
3/4" Dia. 30" Long

TUBELESS TIRE MOUNTING TOOLS

Front End of Tire Bars are shaped to compliment the contour of the wheel

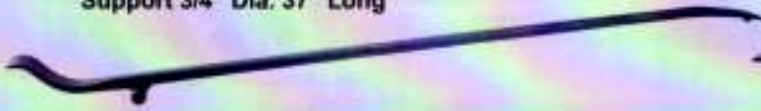


Rear End thins out for easier application.

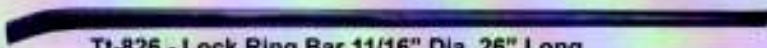


Tt-832
Truck Tubeless Tire Bar w/ Rim Support
3/4" Dia. 37" Long

Tt-834
Truck Tubeless Tire Bar w/o Rim Support
3/4" Dia. 37" Long



LOCK RING BARS



Tt-826 - Lock Ring Bar 1 1/16" Dia. 26" Long



Tt-822 - Lock Ring Bar 5/8" Dia. 15" Long



Tt-838 - Lock Ring Bar 1" Dia. 34" Long

BEAD BREAKING TOOLS



Tt-811 - Bead Breaking Hammer (Wood)



Tt-840 - Bead Breaking Slide Hammer

OTHER TOOLS



Tt-852
Truck Tubeless Tire Bead Lock

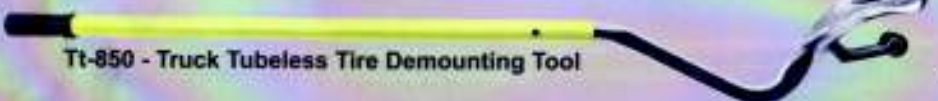
The Tt-854 is a Tool Set which includes the Tt-850, Tt-851, and two Tt-852's. It's everything you need to get started with these handy and time saving tools!



Scan QR Code for Tt-854 Instructions.



Tt-851 - Truck Tubeless Tire Mounting Tool



Tt-850 - Truck Tubeless Tire Demounting Tool



Tt-707
Tire Spreader
(Center Post Style)

Ww-900
Bubble Balancer

This Tire Spreader will help take the work out of inspecting and repairing a tire. Center post style mount means easy access to the tire at hand.

AIR CHUCKS



Ac-100
Quick Coupler Air
Chuck (Clip-On)

Ac-102
Flo-Thru



Ac-162
Nickel Plated Brass Air
Chuck 5/16" Hose Barb
(Flo-Thru)



Ac-163
Nickel Plated Brass Air
Chuck (Closed End)

Ac-164
Flo-Thru



Ac-165
1/4" Ball Foot
Brass Air Chuck



Ac-167
1/4" Ball Foot Brass Air
Chuck (Clip-On)

Ac-169
Flo-Thru



Ac-200
Large Bore Lock-On Air Chuck 1/4" NPT

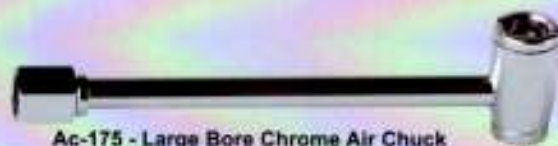
Ac-202
Large Bore Lock-On Air Chuck 1/4" NPT
(Flo-Thru)



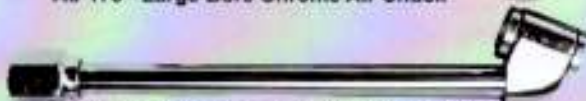
Ac-205 - Large Bore Lock-On Air Chuck 1/4" NPT 5.5" Long



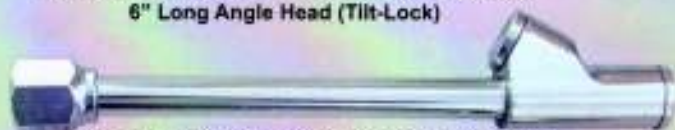
Ac-180 - Core Removing and Inflating Tool (Fast Fill) - Remove the Valve Core, Deflate, and Re-inflate without losing the Valve Core.



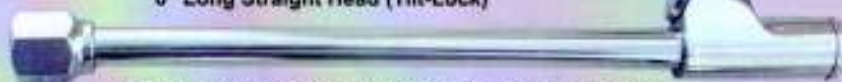
Ac-175 - Large Bore Chrome Air Chuck



Ac-166 - 1/4" Dual Foot Nickel Plated Air Chuck
6" Long Angle Head (Tilt-Lock)



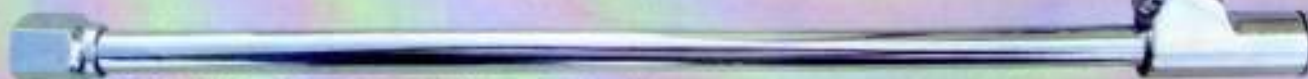
Ac-168 - 1/4" Dual Foot Nickel Plated Air Chuck
6" Long Straight Head (Tilt-Lock)



Ac-108 - 1/4" Dual Foot Air Chuck 8" Long (Tilt-Lock)



Ac-110 - 1/4" Dual Foot Air Chuck 10" Long (Tilt-Lock)



Ac-112 - 1/4" Dual Foot Air Chuck 12" Long (Tilt-Lock)



Ac-114 - 1/4" Dual Foot Air Chuck 14" Long (Tilt-Lock)

Replacement Air Chuck Parts Available:

Sp-ACR
Repair Kit for Ac-108, Ac-
110, Ac-112, Ac-114, Ac-166,
and Ac-168 Air Chucks

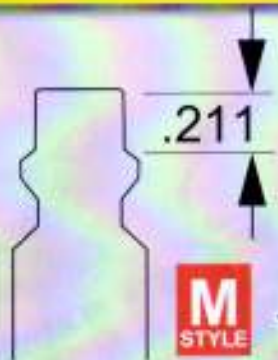


"Tilt-Lock" chuck design or clip-on, allows
for hands free inflation of the tires.
BlackJack Professional grade
air chucks easily attach to
the tire valve.

COUPLERS, NIPPLES, AND TOOLS

BlackJack Tire Repair Tools are of High Quality and Professional Grade. These tools are available in different sizes and styles to fit your needs. With a variety of tools to help maintain your tires, BlackJack ensures you are equipped to handle any situation.

COUPLERS AND NIPPLES



MILTON TYPE



Ac-300
Air Coupler Set (1/4" NPT), Brass
Air Coupler and Male Nipple
(Steel), Type D



Ac-301-2
1/4" NPT Male Air
Coupler (Steel) x2



Ac-303-2
1/4" NPT Female Air
Coupler (Steel) x2



Ac-400
Air Coupler Set (1/4" NPT),
Brass Air Coupler and Male
Nipple (Steel)



Ac-401-2
1/4" NPT Male Air
Coupler (Steel) x2



Ac-403-2
1/4" NPT Female Air
Coupler (Steel) x2



Ac-500
Air Coupler Set (1/4" NPT),
Brass Air Coupler and Male
Nipple (Steel)



Ac-501-2
1/4" NPT Male Air
Coupler (Steel) x2



Ac-503-2
1/4" NPT Female Air
Coupler (Steel) x2



ARO TYPE



TRUFLATE TYPE

AIR TOOLS



Pn-210 - Blow Gun with Rubber Tip and Male Nipple



Pn-220
Truckers Air Seat
Blow Gun w/ 12' coiled hose
and 1/4" NTA Air line "T."

CHEMICALS

BlackJack Vulcanizing Cement contains accelerators that begin the vulcanizing process when coming in contact with the gum rubber of the repair. This fast drying cement speeds up the tire repair process. Cans include applicator brush.

CEMENTS



Ce-508
Cement 8oz can

Ce-532
Cement 1qt can



Ce-708
Blue Cement
8oz can

Ce-732
Blue Cement
1qt can



Ce-932
Black Cement
1qt can

SEALERS



Bs-228-5
Bead Sealer
(5 Gallons)



Bs-228
Bead Sealer 1qt can

BlackJack Bead Sealer is a thick black sealant designed to stop bead leaks. Quick and economical, these sealers form an air-tight seal between the tire and the rim, effectively reducing comebacks from aggravating bead leaks.



Lr-528
Butyl Liner Topcoat 8oz can

TIRE TALC AND LEAK DETECTOR

BlackJack Concentrated Leak Detector allows you to check tires on the vehicle or off the vehicle. This can also be used in the dipping tank. Special wetting agents help to precisely locate even the tiniest leak for easy marking.



Ld-216
Concentrated Leak
Detector 16oz Bottle
(32:1)

BlackJack Tire Talc allows tubes to be installed without folding or sticking to the tire.



Ta-316
Tire Talc 16oz
Shaker Can



Ld-232b - Empty
Pinpoint bottle also
available

Ld-232 - Ready-to-Use
Leak Detector 32oz Bottle

Concentrated Paste in pails or liquid in gallons. BlackJack Lubricants aid in mounting and demounting all types of tires. When dried, it keeps the tire from slipping on the rim and throwing the tire out of balance. Rust inhibitors have been added to help fight rim rust. Will not separate or liquify.

LUBRICANTS



Lb-800
Glide Tire Bead Lube 1gal
(5 gal pail "Lb-805" and 55 Gal Drum "Lb-800-55")



Lb-2000
Concentrated Tire Mounting Compound 8lbs
(25lbs "Lb-2005" and 40 lbs. "Lb-2008")



Lb-2010
Black Lube
Rim Rust Retardant and Mounting Lube 7.5lbs
(25lbs "Lb-2015")



Lb-2020
White Euro Paste
Tire Mounting and Rubber Lubricant
(22.5lbs "Lb-2025")



Lb-2030
Super Blue Paste
Tire Mounting and Rubber Lubricant
(25lbs "Lb-2035")

Lb-850
BlackJack
Repair
Lube



CLEANERS AND SOLVENTS



WX14120
Easy Clean All Purpose
Cleaner-Degreaser 1Qt
(5gal T-Head "WX14125")

High-alkaline (pH 12.6), butyl-based liquid degreaser. Ready-to-Use, no measuring or mixing required. Just spray on and wipe away. Removes aluminum black marks, dirt, grease, oily films, fingerprints, crayon, ink, pencil marks, smoke film, and more. Use on painted surfaces, walls, floors, cabinets, counter-tops, vinyl upholstery, and fiberglass surfaces. Use on carpet as a spot cleaner for most food, blood, urine, and other acid-type stains. (Spot test before use - Trigger Sprayer Included)

Cleaning around the injury is an important first step in the tire repair process. BlackJack Rubber-Buffer Cleaner dissolves mold release and other lubricants and contaminants prior to buffing. The cleaning action of this specially formulated solution removes mold release and maximizes adhesion.

(Flammable)



Rb-125
Liquid Rubber-Buffer
Cleaner 32oz Can



Wc-501
White Lightning
Whitewall Cleaner
1 Gal Jug

Concentrated Whitewall Cleaner gets the white sidewalls of tires clean without damaging the rubber. Removes ground-in scuff marks. It is also recommended for cleaning mats, white and blackwall tires, vinyl tops, and engines.



ALL PURPOSE PATCHES

All Purpose Patches: These heavy duty all purpose patches can be used to repair punctures and small injuries on all types of radial tires. These repairs are not cord reinforced and should be used only when there is no structural damage. When the cords are damaged, use the appropriate cord reinforced patch or boot.

These top quality patches are made with a two piece construction. The top layer is made with a heavy layer of vulcanized, top quality virgin rubber that is feathered at the edges. The bottom layer is made of a non-vulcanized gray cushion gum that is also feathered at the edges. The feathering at the edges allows the repair to be more flexible at the edges. This Heavy Duty patch is a permanent repair.

Use the tables throughout this section to find details of all our patches, patch/plug combos, and boots.

SQUARE



SKU #	PRODUCT DESCRIPTION	SIZE	QTY
Ap-115	Square All Purpose Patch	1 3/4" (45mm)	Pic-Pak of 20
Ap-115-100	Square All Purpose Patch	1 3/4" (45mm)	Pail of 100
Ap-116	Square All Purpose Patch	2 1/8" (54mm)	Pic-Pak of 20
Ap-116-40	Square All Purpose Patch	2 1/8" (54mm)	Pic-Pak of 40
Ap-116-100	Square All Purpose Patch	2 1/8" (54mm)	Pail of 100
Ap-117	Square All Purpose Patch	2 3/4" (70mm)	Pic-Pak of 20
Ap-117-40	Square All Purpose Patch	2 3/4" (70mm)	Pic-Pak of 40
Ap-117-100	Square All Purpose Patch	2 3/4" (70mm)	Pail of 100

ROUND



SKU #	PRODUCT DESCRIPTION	SIZE	QTY
Ap-109	Round All Purpose Patch	1 3/8" (35mm)	Pic-Pak of 20
Ap-109-100	Round All Purpose Patch	1 3/8" (35mm)	Pail of 100
Ap-110	Round All Purpose Patch	1 3/4" (45mm)	Pic-Pak of 20
Ap-110-100	Round All Purpose Patch	1 3/4" (45mm)	Pail of 100
Ap-111	Round All Purpose Patch	2 3/8" (60mm)	Pic-Pak of 20
Ap-111-100	Round All Purpose Patch	2 3/8" (60mm)	Pail of 100
Ap-113	Round All Purpose Patch	3 1/8" (80mm)	Pic-Pak of 20
Ap-113-100	Round All Purpose Patch	3 1/8" (80mm)	Pail of 100

RECTANGLE



SKU #	PRODUCT DESCRIPTION	SIZE	QTY
Ap-130	Rectangle All Purpose Patch	1 1/2" x 2 3/8" (38 x 60mm)	Pic-Pak of 20
Ap-130-100	Rectangle All Purpose Patch	1 1/2" x 2 3/8" (38 x 60mm)	Pail of 100
Ap-132	Rectangle All Purpose Patch	1 3/4" x 3" (45 x 75mm)	Pic-Pak of 20
Ap-132-100	Rectangle All Purpose Patch	1 3/4" x 3" (45 x 75mm)	Pail of 100
Ap-134	Rectangle All Purpose Patch	2 1/4" x 4" (58 x 103mm)	Pic-Pak of 20
Ap-134-100	Rectangle All Purpose Patch	2 1/4" x 4" (58 x 103mm)	Pail of 100

Do Not be fooled by imitators who try to sell a thin tube repair and call it an All Purpose Repair. A Tube Patch cannot safely be used on a tire. Our All Purpose Patches are multi-layered, which hold up for the life of the tire.



We recommend our Pic-Pak Inventory Management System.

The BlackJack tube patch is one of the finest tire patches made today. They are actually stronger than the tube itself.

When installing a tube patch, stop the tube from continuing to tear and split by cutting a small round circle at the end of any split.

OVAL

SKU #	PRODUCT DESCRIPTION	SIZE	QTY
Tp-206	Small Oval Patch	1 7/16" x 2 1/4" (36mm x 58mm)	Pic-Pak of 30
Tp-206-100	Small Oval Patch	1 7/16" x 2 1/4" (36mm x 58mm)	Pail of 100
Tp-207	Medium Oval Patch	1 7/8" x 3 7/8" (48mm x 98mm)	Pic-Pak of 30
Tp-207-100	Medium Oval Patch	1 7/8" x 3 7/8" (48mm x 98mm)	Pail of 100
Tp-208	Large Oval Patch	2 3/8" x 4 1/8" (60mm x 103)	Pic-Pak of 30
Tp-208-100	Large Oval Patch	2 3/8" x 4 1/8" (60mm x 103)	Pail of 100



Tp-208



Tp-207



Tp-206

ROUND

SKU #	PRODUCT DESCRIPTION	SIZE	QTY
Tp-500	Round Patch	1" (25mm)	Pic-Pak of 50
Tp-500-100	Round Patch	1" (25mm)	Pail of 100
Tp-501	Round Patch	1 3/8" (35mm)	Pic-Pak of 30
Tp-501-100	Round Patch	1 3/8" (35mm)	Pail of 100
Tp-506	Round Patch	1 3/4" (45mm)	Pic-Pak of 30
Tp-506-100	Round Patch	1 3/4" (45mm)	Pail of 100
Tp-507	Round Patch	2 3/8" (60mm)	Pic-Pak of 30
Tp-507-100	Round Patch	2 3/8" (60mm)	Pail of 100
Tp-508	Round Patch	3 1/8" (80mm)	Pic-Pak of 30
Tp-508-100	Round Patch	3 1/8" (80mm)	Pail of 100



Tp-508



Tp-507



Tp-506



Tp-501



Tp-500

EURO-STYLE RADIAL AND BIAS

SKU #	PRODUCT DESCRIPTION	SIZE	QTY
Ft-540	Foil Back Patch	1" - (25mm)	Pic-Pak of 40
Ft-540-100	Foil Back Patch	1" - (25mm)	Pail of 100
Ft-541	Foil Back Patch	1 1/4" - (32mm)	Pic-Pak of 35
Ft-541-100	Foil Back Patch	1 1/4" - (32mm)	Pail of 100
Ft-542	Foil Back Patch	1 1/2" - (38mm)	Pic-Pak of 30
Ft-542-100	Foil Back Patch	1 1/2" - (38mm)	Pail of 100
Ft-543	Foil Back Patch	2 1/16" - (52mm)	Pic-Pak of 30
Ft-543-100	Foil Back Patch	2 1/16" - (52mm)	Pail of 100
Ft-544	Foil Back Patch	3" - (76mm)	Pic-Pak of 30
Ft-544-100	Foil Back Patch	3" - (76mm)	Pail of 100
Ft-545-10	Foil Back Patch	3 5/8" - (92mm)	Bag of 10
Ft-545-100	Foil Back Patch	3 5/8" - (92mm)	Pail of 100

Ft-544, Ft-545, Tp-700, and Tp-703 are not pictured.

SKU #	PRODUCT DESCRIPTION	SIZE	QTY
Tp-700	Euro-Style Tube Repair	1 1/4" (32 mm)	Pic-Pak of 30
Tp-700-100	Euro-Style Tube Repair	1 1/4" (32 mm)	Pail of 100
Tp-703	Euro-Style Tube Repair	2 1/8" (54 mm)	Pic-Pak of 25
Tp-703-100	Euro-Style Tube Repair	2 1/8" (54 mm)	Pail of 100
Tp-704	Euro-Style Tube Repair	3" (76 mm)	Pic-Pak of 20
Tp-704-100	Euro-Style Tube Repair	3" (76 mm)	Pail of 100



Ft-542



Ft-543



These round foil and mylar-backed patches are designed for chemical vulcanization. These repairs are made as the "Euro-Style" which is a one-piece construction with two types of rubber assembled at the same time and placed on a Mylar or Aluminum backing material.

These tube patches can be used on Bias or Radial tubes.

CROWN USE ONLY RADIAL REPAIRS

These repairs are heavy duty to replace the structural value of the tire damaged. These are designed for the tread only because they are normally too rigid to be used on the sidewall.

SKU #	PRODUCT DESCRIPTION	PLIES	SIZE	QTY
Ra-025-1	Reinforced Radial Repair (Crown Use Only)	4	4 1/2" x 4 7/8" ~ (115mm x 123mm)	Flat Pack of 1
Ra-025-10	Reinforced Radial Repair (Crown Use Only)	4	4 1/2" x 4 7/8" ~ (115mm x 123mm)	Box of 10
Ra-041-1	Reinforced Radial Repair (Crown Use Only)	4	5 1/4" x 7 1/4" ~ (133mm x 185mm)	Flat Pack of 1
Ra-041-10	Reinforced Radial Repair (Crown Use Only)	4	5 1/4" x 7 1/4" ~ (133mm x 185mm)	Case of 10
Ra-045-1	Reinforced Radial Repair (Crown Use Only)	4	7 5/16" x 9" ~ (187mm x 230)mm	Flat Pack of 1
Ra-045-5	Reinforced Radial Repair (Crown Use Only)	4	7 5/16" x 9" ~ (187mm x 230)mm	Case of 5



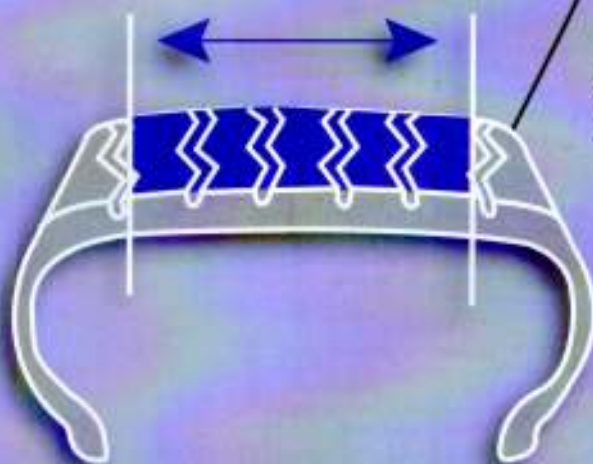
Ra-025



Ra-041



Ra-045



DO NOT apply "Crown Use Only" repairs outside of the crown/tread area of the tire. These repairs are too rigid to be used in a flex area of the tire.

These repairs are specially designed to reinforce the damaged tire in the tread area or the crown of the tire. Also fill the injury to prevent further damage to the tire.

Radial Repairs US Style (Shown at right)	Radial Repairs Euro Style (Shown on page 24)
Ra-025, 4 ply, 4 1/2" x 4 7/8"	Ra-525, 3 ply, 115mm x 125mm
Ra-041, 4 ply, 5 1/4" x 7 1/4"	Ra-535, 4 ply, 125mm x 180mm
Ra-045, 4 ply, 7 5/16" x 9"	Ra-545, 4 ply, 175mm x 230mm

These heavy duty radial repairs can be used to repair punctures and injuries on all types of radial tires, including shoulder and sidewalls. These repairs are cord reinforced with an arrow that should be pointing to the beads when installed. This repair is specially designed with high tensile strength cords to repair the structural damage to the tire. Use the appropriate size and ply to replace the structural damage caused by the injury.

SKU #	PRODUCT DESCRIPTION	PLIES	SIZE	QTY
Ra-010-2	Reinforced Radial Repair	1	2 3/16" x 3" - (55mm x 76mm)	Flat Pack of 2
Ra-010	Reinforced Radial Repair	1	2 3/16" x 3" - (55mm x 76mm)	Pic-Pak of 15
Ra-010-100	Reinforced Radial Repair	1	2 3/16" x 3" - (55mm x 76mm)	Pail of 100
Ra-012-2	Reinforced Radial Repair	1	2 3/4" x 4 1/2" - (70mm x 114mm)	Flat Pack of 2
Ra-012	Reinforced Radial Repair	1	2 3/4" x 4 1/2" - (70mm x 114mm)	Pic-Pak of 15
Ra-012-100	Reinforced Radial Repair	1	2 3/4" x 4 1/2" - (70mm x 114mm)	Pail of 100
Ra-014-2	Reinforced Radial Repair	1	3 3/8" x 5 1/8" - (85mm x 130mm)	Flat Pack of 2
Ra-014	Reinforced Radial Repair	1	3 3/8" x 5 1/8" - (85mm x 130mm)	Box of 10
Ra-014-100	Reinforced Radial Repair	1	3 3/8" x 5 1/8" - (85mm x 130mm)	Pail of 100
Ra-020-2	Reinforced Radial Repair	1	3 3/16" x 5" - (80mm x 125mm)	Flat Pack of 2
Ra-020	Reinforced Radial Repair	2	3 3/16" x 5" - (80mm x 125mm)	Box of 10
Ra-020-25	Reinforced Radial Repair	2	3 3/16" x 5" - (80mm x 125mm)	Box of 25
Ra-040-1	Reinforced Radial Repair	3	4" x 7 3/4" - (102mm x 197mm)	Flat Pack of 1
Ra-040-10	Reinforced Radial Repair	3	4" x 7 3/4" - (102mm x 197mm)	Case of 10
Ra-042-1	Reinforced Radial Repair	4	5 1/8" x 10 1/8" - (130mm x 258mm)	Flat Pack of 1
Ra-042-10	Reinforced Radial Repair	4	5 1/8" x 10 1/8" - (130mm x 258mm)	Case of 10
Ra-044-1	Reinforced Radial Repair	4	5 1/8" x 13 1/4" - (132mm x 335mm)	Flat Pack of 1
Ra-044-10	Reinforced Radial Repair	4	5 1/8" x 13 1/4" - (132mm x 335mm)	Case of 10



Ra-010



Ra-012



Ra-014



Ra-020



Ra-040



Ra-042



Ra-044



- BEAD ARROW
- CORD REINFORCEMENT
- CUSHION LAYER
- CUSHION GUM



BlackJack Flat Packs are available for most patches.

SELECT LOCATION AND TIRE INJURY SIZE

CORD REINFORCED RADIAL PATCH APPLICATION CHART

SIDEWALL INJURY		TREAD INJURY	PASSENGER		LIGHT TRUCK	Tube Type HEAVY TRUCK			Tubeless Type EARTH MOVER
Maximum Sidewall Width	Maximum Sidewall Length	Maximum Tread Injury	125 - 195		Width 6.50 - 12.50	7.50 - 10.00	11.00 - 14.00	14.00 - 40.00	
				205 - 255	7 - 10 215/85 - 255/85 215/75 - 265/75	8 - 11 235/80 - 275/80 245/75 - 295/75	12 - 16.5 295/80 - 315/80 315/75 - 425/65	15.5 - 50.5 20/65 - 65/65	
		1/8" (3mm)	Ra-010 or 510	Ra-010 or 510	Ra-010 or 510	Ra-025 or 520	Ra-020 or 520	Ra-044 or 544	
1/8" (3mm)	1/8" (3mm)		Ra-010 or 510	Ra-010 or 510	Ra-010 or 510	Ra-025 or 520	Ra-020 or 520	Ra-042 or 542	
		1/4" (6mm)	Ra-010 or 510	Ra-010 or 510	Ra-012 or 512	Ra-025 or 520	Ra-020 or 520	Ra-044 or 544	
1/4" (6mm)	1/4" (6mm)		Ra-010 or 510	Ra-010 or 510	Ra-012 or 512	Ra-025 or 520	Ra-020 or 520	Ra-042 or 542	
1/4" (6mm)	1/2" (12mm)		Ra-010 or 510	Ra-010 or 510	Ra-025 or 520	Ra-042 or 542	Ra-040 or 540	Ra-042 or 542	
1/4" (6mm)	2" (50mm)		Ra-012 or 512	Ra-012 or 512	Ra-040 or 522	Ra-042 or 542	Ra-040 or 540	Ra-042 or 542	
1 Cable	1 1/2" (40mm)			Ra-025 or 520	Ra-025 or 520	Ra-025 or 520	Ra-020 or 520		
1 Cable	3 1/8" (80mm)				Ra-040 or 522	Ra-040 or 522	Ra-040 or 522		
1 Cable	4 3/4" (120mm)					Ra-040 or 522	Ra-040 or 522		
1 Cable	6" (150mm)					Ra-042 or 542	Ra-042 or 542		
2 Cables	3/4" (19mm)				Ra-025 or 520	Ra-020 or 520	Ra-040 or 522		
2 Cables	1 1/2" (40mm)				Ra-025 or 520	Ra-040 or 522	Ra-040 or 522		
2 Cables	2 3/8" (60mm)				Ra-040 or 522	Ra-040 or 522	Ra-040 or 540		
2 Cables	5 1/8" (130mm)					Ra-040 or 540	Ra-042 or 542		
		3/8" (10mm)	Ra-010 or 510	Ra-010 or 510	Ra-020 or 520	Ra-020 or 520	Ra-020 or 520	Ra-044 or 544	
3/8" (10mm)	3/8" (10mm)		Ra-010 or 510	Ra-010 or 510	Ra-020 or 520	Ra-020 or 520	Ra-020 or 520	Ra-042 or 542	
3/8" (10mm)	1 1/2" (40mm)		Ra-012 or 512	Ra-012 or 512	Ra-020, 520	Ra-040 or 540	Ra-040 or 540	Ra-042 or 542	
3/8" (10mm)	2" (50mm)		Ra-014 or 514	Ra-014 or 514	Ra-040 or 522	Ra-040 or 540	Ra-040 or 540	Ra-042 or 542	
3/8" (10mm)	2 3/8" (60mm)			Ra-025 or 520	Ra-040 or 522	Ra-040 or 540	Ra-040 or 540	Ra-042 or 542	
3/8" (10mm)	3 1/8" (80mm)				Ra-042 or 542	Ra-042 or 542	Ra-042 or 542	Ra-042 or 542	
3/8" (10mm)	5 1/8" (130mm)					Ra-042 or 542	Ra-044 or 544	Ra-044 or 544	
		1/2" (12mm)	Ra-012 or 512	Ra-012 or 512	Ra-040 or 522	Ra-025 or 520	Ra-042 or 542	Ra-044 or 544	
1/2" (12mm)	1 1/2" (40mm)		Ra-012 or 512	Ra-012 or 512	Ra-040 or 522	Ra-040 or 540	Ra-040 or 540	Ra-044 or 544	
1/2" (12mm)	2" (50mm)		Ra-014 or 514	Ra-014 or 514	Ra-040 or 522	Ra-040 or 540	Ra-042 or 542	Ra-044 or 544	
1/2" (12mm)	2 3/4" (70mm)			Ra-025 or 520	Ra-040 or 520	Ra-040 or 540	Ra-042 or 542	Ra-044 or 544	
1/2" (12mm)	3 3/4" (95mm)				Ra-040 or 540	Ra-042 or 542	Ra-042 or 542	Ra-025 or 520	
1/2" (12mm)	5 1/8" (130mm)					Ra-044 or 544	Ra-044 or 544	Ra-041 or 535	
		3/4" (19mm)	Ra-012 or 512	Ra-012 or 512	Ra-040 or 524	Ra-025 or 520	Ra-041 or 535	Ra-044 or 544	
3/4" (19mm)	3/4" (20mm)		Ra-012 or 512	Ra-012 or 512	Ra-040 or 524	Ra-040 or 540	Ra-040 or 540	Ra-044 or 544	
3/4" (19mm)	1" (25mm)		Ra-012 or 512	Ra-014 or 514	Ra-040 or 524	Ra-040 or 540	Ra-040 or 540	Ra-044 or 544	
3/4" (19mm)	1 1/2" (40mm)		Ra-012 or 512	Ra-014 or 514	Ra-040 or 524	Ra-040 or 540	Ra-042 or 542	Ra-044 or 544	
3/4" (19mm)	2" (50mm)		Ra-014 or 514	Ra-014, or 514	Ra-040 or 524	Ra-040 or 540	Ra-042 or 542	Ra-044 or 544	
3/4" (19mm)	2 1/2" (65mm)				Ra-040 or 524	Ra-040 or 540	Ra-042 or 542	Ra-044 or 544	
3/4" (19mm)	4 3/8" (110mm)					Ra-042 or 542	Ra-044 or 544	Ra-044 or 544	
3/4" (19mm)	5 1/8" (130mm)					Ra-044 or 544	Ra-044 or 544	Ra-044 or 544	
		1" (25mm)	Ra-014 or 514	Ra-014 or 514	Ra-040 or 540	Ra-040 or 540	Ra-044 or 544	Ra-044 or 544	
1" (25mm)	1 1/2" (40mm)		Ra-014 or 514	Ra-014 or 514	Ra-040 or 540	Ra-042 or 542	Ra-044 or 544	Ra-045 or 545	
1" (25mm)	2" (50mm)			Ra-040 or 522	Ra-040 or 540	Ra-042 or 542	Ra-044 or 544	Ra-045 or 545	
1" (25mm)	3 1/8" (80mm)					Ra-042 or 542	Ra-044 or 544	Ra-045 or 545	
1" (25mm)	4" (100mm)					Ra-044 or 544	Ra-044 or 544	Ra-045 or 545	

MOST POPULAR PATCHES LISTED. ANY PATCH CAN BE USED ON ALL APPLICATIONS

SELECT LOCATION AND TIRE INJURY SIZE ...CONTINUED

CORD REINFORCED RADIAL PATCH APPLICATION CHART

SIDEWALL INJURY		TREAD INJURY	PASSENGER		LIGHT TRUCK	Tube Type HEAVY TRUCK			Tubeless Type EARTH MOVER
									
Maximum Sidewall Width	Maximum Sidewall Length	Maximum Tread Injury	125 - 195	205 - 255	Width 6.50 - 12.50 215/85 - 255/85 215/75 - 265/75	7.50 - 10.00 235/80 - 275/80 245/75 - 285/75	11.00 - 14.00 295/80 - 315/80 315/75 - 425/65	Width 14.00 - 40.00 20/65 - 65/65	
		1 1/4" (30mm)	Ra-014 or 514	Ra-014 or 514	Ra-040 or 522	Ra-040 or 522	Ra-044 or 544	Ra-041 or 535	
1 1/4" (30mm)	2" (50mm)			Ra-522	Ra-040 or 522	Ra-042 or 542	Ra-044 or 544	Ra-041 or 535	
1 1/4" (30mm)	3 1/8" (80mm)				Ra-025 or 525	Ra-044 or 544	Ra-044 or 544	Ra-045 or 545	
1 1/4" (30mm)	4" (100mm)					Ra-044 or 544	Ra-041 or 535	Ra-045 or 545	
		1 1/2" (40mm)				Ra-044 or 544	Ra-044 or 544	Ra-041 or 535	
1 1/2" (40mm)	2" (50mm)					Ra-044 or 544	Ra-044 or 544	Ra-041 or 535	
1 1/2" (40mm)	3 1/8" (80mm)					Ra-044 or 544	Ra-044 or 544	Ra-045 or 545	
		3/4" (20mm)	Ra-010 or 510	Ra-010 or 510	Ra-012 or 512	Ra-020 or 520	Ra-020 or 520	Ra-042 or 542	
		3/8" (10mm)	Ra-012 or 512	Ra-012 or 512	Ra-020 or 520	Ra-020 or 520	Ra-522	Ra-042 or 542	
		1/2" (12mm)	Ra-012 or 512	Ra-012 or 512	Ra-020 or 520	Ra-522	Ra-040 or 540	Ra-044 or 544	
		3/4" (19mm)		Ra-014 or 514	Ra-522	Ra-522	Ra-040 or 540		
		1" (25mm)			Ra-040 or 540	Ra-042 or 542	Ra-042 or 542		
		1 1/2" (38mm)				Ra-044 or 544	Ra-044 or 544		

CORD REINFORCED RADIAL REPAIR APPLICATION CHART

SIDEWALL INJURY		TREAD INJURY	AGRICULTURAL	
				
Maximum Sidewall Width	Maximum Sidewall Length	Maximum Tread Injury	Width 8-11 8.3 - 12.4	Width 12-15 13.5 - 30.5 440/65 - 800/65
1/4" (6mm)	1/4" (6mm)	1/4" (6mm)	Ra-012 or 512	Ra-012 or 512
3/8" (10mm)	3/8" (10mm)	3/8" (10mm)	Ra-012 or 512	Ra-012 or 512
3/8" (10mm)	1 1/2" (40mm)		Ra-020 or 520	Ra-020 or 520
3/4" (19mm)	3/4" (19mm)	3/4" (19mm)	Ra-020 or 520	Ra-020 or 520
3/4" (19mm)	2" (50mm)		Ra-522	Ra-041
1 1/2" (40mm)	4" (100mm)	1 1/2" (40mm)	Ra-041	Ra-045 or 545
2" (50mm)	3 1/2" (90mm)		Ra-041	Ra-045 or 545
2 1/2" (65mm)	2" (50mm)		Ra-041	Ra-045 or 545
2 1/2" (65mm)	4" (100mm)			Ra-045 or 545
2 3/4" (70mm)	2 3/4" (70mm)	2 3/4" (70mm)	Ra-041	Ra-045 or 545
3 1/4" (80mm)	3 1/4" (80mm)			Ra-045 or 545
3 1/4" (80mm)	5 1/4" (130mm)			Ra-046
3 1/2" (90mm)	4 1/2" (115mm)	3 1/2" (90mm)		Ra-046
4" (100mm)	4" (100mm)			Ra-046
4" (100mm)	6 1/2" (165mm)			Ra-046
5 1/4" (130mm)	5 1/4" (130mm)	5 1/4" (130mm)		Ra-046

USE THIS CHART AS A GUIDE

1) Measure the injury to be repaired across the largest damaged area.

2) Locate the Sidewall or Tread column for the size of injury to be repaired.

If the injury size is between measurements on the chart, go up to the next largest measurement.

3) When you locate the correct injury size on the chart, go to the appropriate tire size column. Where the injury size row and the tire size column intersect is the correct repair unit to use.

NOTE: This is only a guide, each technician must determine the complete damage to the tire that is being repaired. It is important to use a repair with enough structural reinforcement to replace the structural loss to the damaged tire. The structural integrity must be repaired and also RMA requires that the injury to the tire must also be filled. For Inserts and Repairs, see pages 10, 38 & 39.

Do not use bias type or tube repairs on radial tires.

MOST POPULAR PATCHES LISTED. ANY PATCH CAN BE USED ON ALL APPLICATIONS

EURO-STYLE RADIAL PATCHES

The BlackJack radial chemical-cure patch is designed to vulcanize without heat. These radial repairs are made as the "Euro-Style" which is a one-piece construction with two types of rubber assembled at the same time and placed on a mylar backing material. These repairs are cord reinforced with a bead arrow. It is an excellent repair for the tread area, shoulder or sidewall where structural reinforcement is required. Use the appropriate size and ply to replace the structural damage caused by the injury.

Note: Ra-505 is a special non-cord reinforced repair which is flexible and can be used on the shoulder and sidewall.



Ra-505



Ra-510



Ra-512



Ra-514



Ra-520



Ra-522



Ra-524



Ra-540



Ra-542

SKU #	PRODUCT DESCRIPTION	SIZE	PLIES	QTY
Ra-505	Radial Chemical Cure Repair	2" ~ (50mm)	1	Pic-Pak of 20
Ra-505-100	Radial Chemical Cure Repair	2" ~ (50mm)	1	Pail of 100
Ra-510-2	Radial Chemical Cure Repair	55mm x 75mm (2 1/8" x 3")	1	Flat Pack of 2
Ra-510	Radial Chemical Cure Repair	55mm x 75mm (2 1/8" x 3")	1	Pic-Pak of 15
Ra-510-100	Radial Chemical Cure Repair	55mm x 75mm (2 1/8" x 3")	1	Pail of 100
Ra-512-2	Radial Chemical Cure Repair	70mm x 115mm (2 3/4" x 4 3/8")	1	Flat Pack of 2
Ra-512	Radial Chemical Cure Repair	70mm x 115mm (2 3/4" x 4 3/8")	1	Pic-Pak of 15
Ra-512-100	Radial Chemical Cure Repair	70mm x 115mm (2 3/4" x 4 3/8")	1	Pail of 100
Ra-514-2	Radial Chemical Cure Repair	85mm x 130mm (3 1/4" x 5")	1	Flat Pack of 2
Ra-514-10	Radial Chemical Cure Repair	85mm x 130mm (3 1/4" x 5")	1	Box of 10
Ra-520-2	Radial Chemical Cure Repair	80mm x 125mm (3" x 5")	2	Flat Pack of 2
Ra-520-10	Radial Chemical Cure Repair	80mm x 125mm (3" x 5")	2	Box of 10
Ra-522-2	Radial Chemical Cure Repair	75mm x 175mm (2 7/8" x 6 3/4")	2	Flat Pack of 2
Ra-522-10	Radial Chemical Cure Repair	75mm x 175mm (2 7/8" x 6 3/4")	2	Box of 10
Ra-524-2	Radial Chemical Cure Repair	75mm x 220mm (2 7/8" x 8 5/8")	2	Flat Pack of 2
Ra-524-10	Radial Chemical Cure Repair	75mm x 220mm (2 7/8" x 8 5/8")	2	Box of 10
Ra-540-1	Radial Chemical Cure Repair	100mm x 195mm (4" x 7 1/2")	3	Flat Pack of 1
Ra-540-10	Radial Chemical Cure Repair	100mm x 195mm (4" x 7 1/2")	3	Box of 10
Ra-542-1	Radial Chemical Cure Repair	130mm x 260mm (5" x 10")	4	Flat Pack of 1
Ra-542-10	Radial Chemical Cure Repair	130mm x 260mm (5" x 10")	4	Box of 10
Ra-544-1	Radial Chemical Cure Repair	130mm x 335mm (5 1/4" x 13")	4	Flat Pack of 1
Ra-544-10	Radial Chemical Cure Repair	130mm x 335mm (5 1/4" x 13")	4	Box of 10
Ra-546-1	Radial Chemical Cure Repair	180mm x 440mm (7 1/4" x 17 1/4")	4	Flat Pack of 1
Ra-546-10	Radial Chemical Cure Repair	180mm x 440mm (7 1/4" x 17 1/4")	4	Box of 10



Ra-544



Ra-546

CROWN USE ONLY

These BlackJack repairs are made with the "Euro-Style" one-piece construction. These repairs are very heavy duty to replace the structural value of the tire damaged. These are designed for the tread only because they are normally too rigid to be used on the sidewall.

SKU #	PRODUCT DESCRIPTION	PLIES	SIZE	QTY
Ra-525-1	Radial Chemical Cure Repair (Crown Use Only)	3	115mm x 125mm (4 1/2" x 5")	Flat Pack of 1
Ra-525-10	Radial Chemical Cure Repair (Crown Use Only)	3	115mm x 125mm (4 1/2" x 5")	Box of 10
Ra-535-1	Radial Chemical Cure Repair (Crown Use Only)	4	125mm x 180mm (5" x 7")	Flat Pack of 1
Ra-535-10	Radial Chemical Cure Repair (Crown Use Only)	4	125mm x 180mm (5" x 7")	Box of 10
Ra-545-1	Radial Chemical Cure Repair (Crown Use Only)	4	175mm x 230mm (7" x 9")	Flat Pack of 1
Ra-545-10	Radial Chemical Cure Repair (Crown Use Only)	4	175mm x 230mm (7" x 9")	Box of 10

(See page 28 for Application Diagram.)



Ra-525



Ra-535



Ra-545

RADIAL PATCHES

These heavy duty radial patches can be used to repair punctures and small injuries on all types of tires, including shoulder and sidewalls. These repairs are not cord reinforced and should be used only when there is no structural damage. When the cords are damaged, use the appropriate cord reinforced radial patch.

These top quality specially designed radial repairs are made with a two piece construction. The top layer is made with a heavy layer of vulcanized top quality butyl rubber that is feathered at the edges. The bottom or second layer is made of a non-vulcanized black cushion gum that is also feathered at the edges. The feathering at the edges allows the repair to be more flexible at the edges. This Heavy Duty patch is a permanent repair.

SQUARE



Ra-301



Ra-302



Ra-303

SKU #	PRODUCT DESCRIPTION	SIZE	QTY
Ra-301	Square Radial Patch	1 3/4" (45mm)	Pic-Pak of 20
Ra-301-100	Square Radial Patch	1 3/4" (45mm)	Pail of 100
Ra-302	Square Radial Patch	2 1/8" (54mm)	Pic-Pak of 20
Ra-302-100	Square Radial Patch	2 1/8" (54mm)	Pail of 100
Ra-303	Square Radial Patch	2 3/4" (70mm)	Pic-Pak of 20
Ra-303-100	Square Radial Patch	2 3/4" (70mm)	Pail of 100

ROUND



Ra-551



Ra-552



Ra-553



Ra-554

SKU #	PRODUCT DESCRIPTION	SIZE	QTY
Ra-551	Round Radial Patch	1 3/4" (45mm)	Pic-Pak of 20
Ra-551-100	Round Radial Patch	1 3/4" (45mm)	Pail of 100
Ra-552	Round Radial Patch	2 3/8" (60mm)	Pic-Pak of 20
Ra-552-100	Round Radial Patch	2 3/8" (60mm)	Pail of 100
Ra-553	Round Radial Patch	3 1/8" (80mm)	Pic-Pak of 20
Ra-553-100	Round Radial Patch	3 1/8" (80mm)	Pail of 100
Ra-554	Round Radial Patch	4" (100mm)	Pic-Pak of 20
Ra-554-100	Round Radial Patch	4" (100mm)	Pail of 100

OVAL



Ra-122



Ra-120



Ra-121

SKU #	PRODUCT DESCRIPTION	SIZE	QTY
Ra-120	Oval Radial Patch	1 3/4" x 3" (45mm x 75mm)	Pic-Pak of 20
Ra-120-100	Oval Radial Patch	1 3/4" x 3" (45mm x 75mm)	Pail of 100
Ra-121	Oval Radial Patch	2 1/4" x 4" (58mm x 103mm)	Pic-Pak of 20
Ra-121-100	Oval Radial Patch	2 1/4" x 4" (58mm x 103mm)	Pail of 100
Ra-122	Oval Radial Patch	2 7/8" x 5 3/4" (73mm x 145mm)	Pic-Pak of 20
Ra-122-100	Oval Radial Patch	2 7/8" x 5 3/4" (73mm x 145mm)	Pail of 100



We recommend our Pic-Pak Inventory Management System.

The BlackJack Sidewall Off-Road repairs are specifically designed to be used only on the sidewall. They can be used to temporarily repair punctures and injuries to the sidewall on all types of off-road tires. These economy, non-directional cord reinforced repairs are manufactured with chopped cord blended into the top layer of rubber. These are a two-piece repair with black vulcanizing gum. Use the appropriate size to replace the structural damage caused by the injury. *Designed to be used with an inner tube.*

SIDEWALL

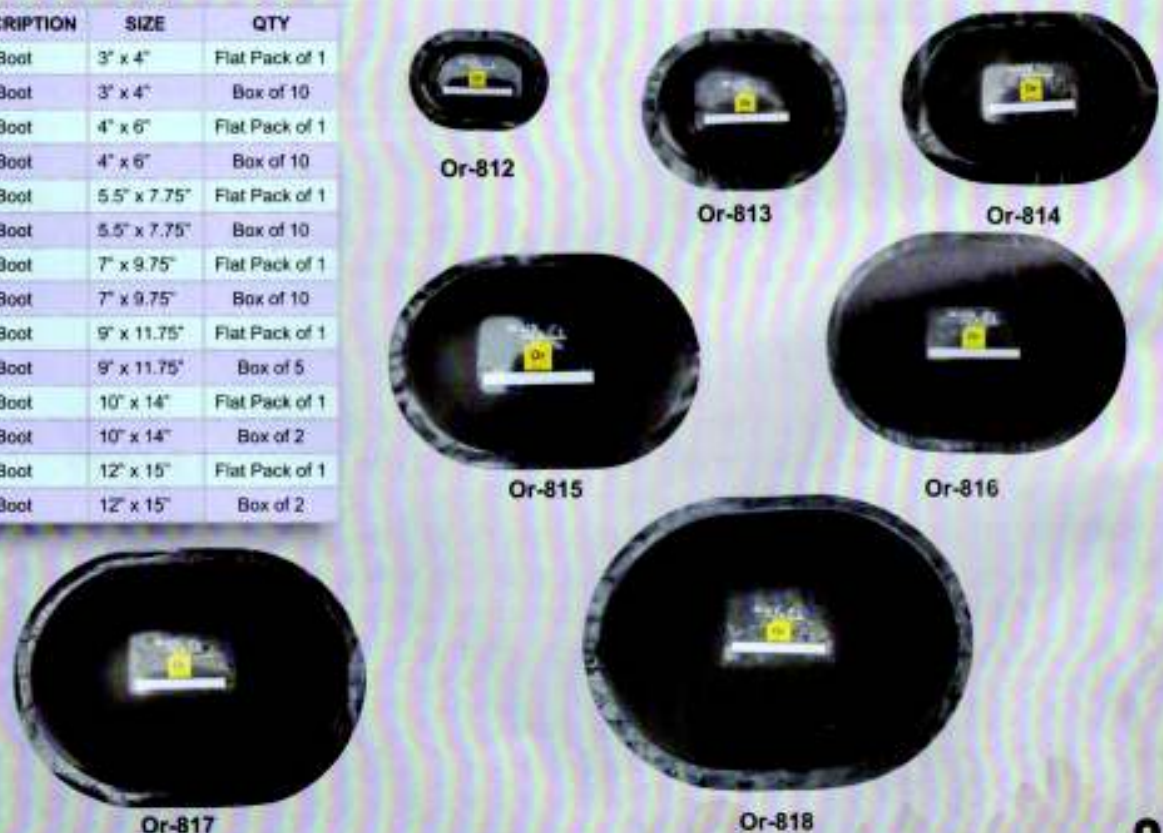
SKU #	PRODUCT DESCRIPTION	SIZE	QTY
Or-852-1	Sidewall Agricultural Boot	5.25" x 7.25"	Flat Pack of 1
Or-852	Sidewall Agricultural Boot	5.25" x 7.25"	Box of 5
Or-853-1	Sidewall Agricultural Boot	6.25" x 10"	Flat Pack of 1
Or-853	Sidewall Agricultural Boot	6.25" x 10"	Box of 5
Or-854-1	Sidewall Agricultural Boot	7.5" x 13.25"	Flat Pack of 1
Or-854	Sidewall Agricultural Boot	7.5" x 13.25"	Box of 5
Or-855-1	Sidewall Agricultural Boot	10.5" x 15"	Flat Pack of 1
Or-855	Sidewall Agricultural Boot	10.5" x 15"	Box of 2
Or-856-1	Sidewall Agricultural Boot	12" x 18"	Flat Pack of 1
Or-856	Sidewall Agricultural Boot	12" x 18"	Box of 2



OVAL

The BlackJack Off-Road repairs are designed to be used on any part of the tire except the sidewall. They can be used to temporarily repair punctures and injuries on all types of off-road tires. These economy, non-directional cord reinforced repairs are manufactured with chopped cord blended into the top layer of rubber. These are a two-piece repair with black vulcanizing gum. Use the appropriate size to replace the structural damage caused by the injury. *Designed to be used with an inner tube.*

SKU #	PRODUCT DESCRIPTION	SIZE	QTY
Or-812-1	Oval Agricultural Boot	3" x 4"	Flat Pack of 1
Or-812	Oval Agricultural Boot	3" x 4"	Box of 10
Or-813-1	Oval Agricultural Boot	4" x 6"	Flat Pack of 1
Or-813	Oval Agricultural Boot	4" x 6"	Box of 10
Or-814-1	Oval Agricultural Boot	5.5" x 7.75"	Flat Pack of 1
Or-814	Oval Agricultural Boot	5.5" x 7.75"	Box of 10
Or-815-1	Oval Agricultural Boot	7" x 9.75"	Flat Pack of 1
Or-815	Oval Agricultural Boot	7" x 9.75"	Box of 10
Or-816-1	Oval Agricultural Boot	9" x 11.75"	Flat Pack of 1
Or-816	Oval Agricultural Boot	9" x 11.75"	Box of 5
Or-817-1	Oval Agricultural Boot	10" x 14"	Flat Pack of 1
Or-817	Oval Agricultural Boot	10" x 14"	Box of 2
Or-818-1	Oval Agricultural Boot	12" x 15"	Flat Pack of 1
Or-818	Oval Agricultural Boot	12" x 15"	Box of 2



BIAS-PLY PATCH APPLICATION CHART

INJURY SIZE

BIAS-PLY PATCH APPLICATION CHART

PLY	INJURY SIZE									
	1/8" (3mm)	1/4" (6mm)	3/8" (10mm)	1/2" (13mm)	3/4" (20mm)	1" (25mm)	1 1/2" (40mm)	2" (50mm)	2 1/2" (65mm)	3" (75mm)
PASSENGER, TRUCK & EARTH MOVER with bias ply construction										
4	Bp-573	Bp-574 or 580	Bp-574 or 580	Bp-575 or 581	Bp-575 or 581	Bp-575 or 581	Bp-575 or 581	Bp-577 or 584	Bp-577 or 584	
6	Bp-573	Bp-574 or 580	Bp-574 or 580	Bp-575 or 581	Bp-576 or 582	Bp-576 or 582	Bp-576 or 582	Bp-577 or 584	Bp-577 or 584	
8	Bp-573	Bp-574 or 580	Bp-574 or 580	Bp-575 or 581	Bp-576 or 582	Bp-576 or 582	Bp-576 or 582	Bp-577 or 584	Bp-577 or 584	
10	Bp-573	Bp-574 or 580	Bp-575 or 581	Bp-576 or 582	Bp-576 or 582	Bp-576 or 582	Bp-576 or 582	Bp-577 or 584	Bp-577 or 584	Bp-578 or 585
12	Bp-573	Bp-574 or 580	Bp-575 or 581	Bp-576 or 582	Bp-576 or 582	Bp-576 or 582	Bp-576 or 582	Bp-577 or 584	Bp-577 or 584	Bp-578 or 585
14	Bp-573	Bp-575 or 581	Bp-575 or 581	Bp-576 or 582	Bp-576 or 582	Bp-576 or 586	Bp-576 or 586	Bp-577 or 584	Bp-578 or 585	Bp-578 or 585
16	Bp-573	Bp-575 or 581	Bp-575 or 581	Bp-576 or 582	Bp-576 or 582	Bp-576 or 586	Bp-576 or 586	Bp-577 or 584	Bp-578 or 585	Bp-578 or 586
18	Bp-574 or 580	Bp-575 or 581	Bp-576 or 582	Bp-577 or 584	Bp-576 or 582	Bp-576 or 586	Bp-577 or 584	Bp-578 or 585	Bp-578 or 585	
20	Bp-574 or 580	Bp-575 or 581	Bp-576 or 582	Bp-577 or 584	Bp-576 or 582	Bp-576 or 586	Bp-577 or 584	Bp-578 or 585	Bp-578 or 586	
22	Bp-574 or 580	Bp-576 or 582	Bp-576 or 582	Bp-577 or 584	Bp-576 or 586	Bp-576 or 586	Bp-577 or 584	Bp-578 or 585	Bp-578 or 586	
24	Bp-574 or 580	Bp-576 or 582	Bp-576 or 582	Bp-577 or 584	Bp-576 or 586	Bp-577 or 584	Bp-578 or 585	Bp-578 or 585		
FARM, TRACTOR & SKID STEER with bias ply construction										
4	Bp-573	Bp-575 or 581	Bp-575 or 581	Bp-576 or 582	Bp-576 or 586	Bp-576 or 586	Bp-576 or 586			
6	Bp-573	Bp-575 or 581	Bp-575 or 581	Bp-576 or 582	Bp-577 or 584	Bp-577 or 584	Bp-577 or 584	Bp-577 or 584		
8	Bp-574 or 580	Bp-575 or 581	Bp-576 or 582	Bp-577 or 584	Bp-578 or 585	Bp-578 or 585	Bp-578 or 585	Bp-578 or 585	Bp-578 or 585	
10	Bp-574 or 580	Bp-575 or 581	Bp-576 or 582	Bp-577 or 584	Bp-578 or 585	Bp-578 or 586	Bp-578 or 585	Bp-578 or 585	Bp-578 or 585	Bp-578 or 586
12	Bp-575 or 581	Bp-575 or 581	Bp-576 or 582	Bp-577 or 584	Bp-578 or 585	Bp-578 or 586	Bp-578 or 586	Bp-578 or 586	Bp-578 or 586	Bp-578 or 586
14	Bp-575 or 581	Bp-576 or 582	Bp-577 or 584	Bp-577 or 584	Bp-578 or 586	Bp-578 or 586	Bp-578 or 586	Bp-578 or 586	Bp-578 or 586	Bp-578 or 586
16	Bp-575 or 581	Bp-576 or 582	Bp-577 or 584	Bp-578 or 585	Bp-578 or 586	Bp-578 or 586	Bp-578 or 586	Bp-578 or 586	Bp-578 or 586	Bp-578 or 586
18	Bp-576 or 582	Bp-577 or 584	Bp-577 or 584	Bp-578 or 585	Bp-578 or 586	Bp-578 or 586	Bp-578 or 586	Bp-578 or 586	Bp-578 or 586	Bp-578 or 586
HEAVY DUTY REINFORCEMENT REPAIRS for bias ply tires										
8-12	Bp-574 or 580	Bp-574 or 580	Bp-575 or 581	Bp-575 or 581	Bp-575 or 581	Bp-575 or 581	Bp-576 or 582	Bp-577 or 584	Bp-577 or 584	Bp-578 or 586
14-18	Bp-574 or 580	Bp-574 or 580	Bp-575 or 581	Bp-575 or 581	Bp-576 or 582	Bp-576 or 582	Bp-577 or 584	Bp-577 or 584	Bp-578 or 586	Bp-578 or 586
20-24	Bp-574 or 580	Bp-575 or 581	Bp-575 or 581	Bp-576 or 582	Bp-577 or 584	Bp-576 or 582	Bp-577 or 584	Bp-577 or 584	Bp-578 or 586	Bp-578 or 586

USE THIS CHART AS A GUIDE

- 1) Measure the injury to be repaired across the largest damaged area. If the injury size is between measurements on the chart, go up to the next largest measurement.
- 2) Locate the row for the number of the ply rating of tire to be repaired.
- 3) When you locate the correct injury size column on the chart, go to the appropriate ply rating row. Where the injury size column and the tire ply rating row intersect is the correct repair unit to use.

NOTE: This is only a guide, each technician must determine the complete damage to the tire that is being repaired. It is important to use a repair with enough structural reinforcement to replace the structural loss to the damaged tire. The structural integrity must be repaired and also RMA requires that the injury to the tire must also be filled. For Inserts and Repairs, see Pages 10, 38 & 39.

Do not use radial repairs on bias tires.

These cord reinforced Bias-ply repairs are a Two-Piece repair with gray vulcanizing gum. These Heavy Duty Bias-ply repairs can be used to repair injuries on all types of Bias-ply tires, including shoulder and sidewalls. These repairs are cord reinforced with an arrow that should be pointing to the beads when installed. This repair is specially designed with high tensile strength cords to repair the structural damage to the tire. Use the appropriate size and ply to replace the structural damage caused by the injury.

EURO-STYLE

SKU #	PRODUCT DESCRIPTION	SIZE	PLIES	QTY
Bp-573	One-Piece Bias-ply Repair	2" (55mm)	2	Pic-Pak of 15
Bp-573-100	One-Piece Bias-ply Repair	2" (55mm)	2	Pail of 100
Bp-574	One-Piece Bias-ply Repair	3 1/8" (80mm)	2	Pic-Pak of 15
Bp-574-100	One-Piece Bias-ply Repair	3 1/8" (80mm)	2	Pail of 100
Bp-575-2	One-Piece Bias-ply Repair	4" (100mm)	2	Flat Pack of 2
Bp-575	One-Piece Bias-ply Repair	4" (100mm)	2	Pic-Pak of 12
Bp-576-1	One-Piece Bias-ply Repair	4 3/4" (120mm)	4	Flat Pack of 1
Bp-576-10	One-Piece Bias-ply Repair	4 3/4" (120mm)	4	Box of 10
Bp-577-1	One-Piece Bias-ply Repair	6 3/8" (160mm)	4	Flat Pack of 1
Bp-577-10	One-Piece Bias-ply Repair	6 3/8" (160mm)	4	Box of 10
Bp-578-1	One-Piece Bias-ply Repair	9 1/4" (235mm)	6	Flat Pack of 1
Bp-578-10	One-Piece Bias-ply Repair	9 1/4" (235mm)	6	Box of 10

Bp-578

Bp-576

Bp-577

Bp-573

Bp-574

Bp-575

These cord reinforced repairs are made as the "Euro-Style" one-piece construction with two types of rubber assembled at the same time and placed on a mylar backing material. These repairs are reinforced with high tensile strength cords and arrows that should be pointing to the beads when installed. This is an excellent repair for the tread area, shoulder or sidewall where structural reinforcement is required. Use the appropriate size and ply to replace the structural damage caused by the injury.

USA STYLE

SKU #	PRODUCT DESCRIPTION	SIZE	PLIES	QTY
Bp-400	Round Reinforced Repair	2 1/4" (57mm)	2	Pic-Pak of 12
Bp-401	Round Reinforced Repair	3 3/16" (80mm)	2	Pic-Pak of 12
Bp-580-2	Criss-Cross Reinforced Repair	3 1/2" (90mm)	2	Flat Pack of 2
Bp-580-12	Criss-Cross Reinforced Repair	3 1/2" (90mm)	2	Bulk Pkg of 12
Bp-581-2	Criss-Cross Reinforced Repair	4" (103mm)	2	Flat Pack of 2
Bp-581-12	Criss-Cross Reinforced Repair	4" (103mm)	2	Bulk Pkg of 12
Bp-582-2	Criss-Cross Reinforced Repair	4 3/4" (120mm)	4	Flat Pack of 2
Bp-582-12	Criss-Cross Reinforced Repair	4 3/4" (120mm)	4	Bulk Pkg of 12
Bp-583-1	Criss-Cross Reinforced Repair	5 3/4" (145mm)	4	Flat Pack of 1
Bp-583-12	Criss-Cross Reinforced Repair	5 3/4" (145mm)	4	Bulk Pkg of 12
Bp-584-1	Criss-Cross Reinforced Repair	7" (180mm)	4	Flat Pack of 1
Bp-584-12	Criss-Cross Reinforced Repair	7" (180mm)	4	Bulk Pkg of 12
Bp-585-1	Criss-Cross Reinforced Repair	8 3/4" (225mm)	6	Flat Pack of 1
Bp-585-12	Criss-Cross Reinforced Repair	8 3/4" (225mm)	6	Bulk Pkg of 12
Bp-586-1	Criss-Cross Reinforced Repair	10 1/2" (265mm)	6	Flat Pack of 1
Bp-586-12	Criss-Cross Reinforced Repair	10 1/2" (265mm)	6	Bulk Pkg of 12

Bp-585

Bp-586

Bp-400

Bp-401

Bp-580

Bp-581

Bp-582

Bp-583

Bp-584

LEAD WIRE TYPE REPAIRS

Lead Wire Inserts are designed to fill the injury in passenger and truck tires. These are designed for both Radial and Bias-ply tires and coated with a premium blue gum.

LEAD WIRE INSERTS



SKU #	PRODUCT DESCRIPTION	Carbide Cutter	SIZE	QTY
In-903	Lead Wire Insert	Co-032, 032L	1/8" (3mm)	Pic-Pak of 50
In-904	Lead Wire Insert	Co-032, 032L	5/32" (4mm)	Pic-Pak of 50
In-905-5	Lead Wire Insert	Co-033	1/4" (6mm)	Pkg of 5
In-906	Lead Wire Insert	Co-033	1/4" (6mm)	Pic-Pak of 60
In-906-100	Lead Wire Insert	Co-033	1/4" (6mm)	Bulk Pkg of 100
In-910-5	Lead Wire Insert	Co-033	3/8" (10mm)	Pkg of 5
In-910	Lead Wire Insert	Co-033	3/8" (10mm)	Pic-Pak of 40
In-910-100	Lead Wire Insert	Co-033	3/8" (10mm)	Bulk Pkg of 100
In-911-5	Lead Wire Insert	Co-034	7/16" (11mm)	Pkg of 5
In-911	Lead Wire Insert	Co-034	7/16" (11mm)	Pic-Pak of 30
In-911-100	Lead Wire Insert	Co-034	7/16" (11mm)	Bulk Pkg of 100

PATCH/PLUG COMBI UNITS - WIRE LEAD TYPE

The Patch Plug Combi Units offer the benefits of a plug and patch in one. A built-in stem lead wire helps to pull through from inside the tire, making a complete one-step permanent seal inside-out. It makes a permanent repair through the tread with the rubber constructed patch and stem. Fast, easy, and one of the best ways to repair a radial or bias-ply tire.



Cu-203-12



Cu-206-12



Cu-210-12



Cu-303-12



Cu-310-12

SKU #	PRODUCT DESCRIPTION	Carbide Cutter	SIZE	QTY
Cu-203-12	Patch Plug Combi (Dipped Stem)	Co-032L	1/8" (3mm) Stem	Box of 12
Cu-203-40	Patch Plug Combi (Dipped Stem)	Co-032L	1/8" (3mm) Stem	Box of 40
Cu-204-12	Patch Plug Combi (Dipped Stem)	Co-032L	(4mm) Stem	Box of 12
Cu-204-40	Patch Plug Combi (Dipped Stem)	Co-032L	(4mm) Stem	Box of 40
Cu-206-12	Patch Plug Combi (Dipped Stem)	Co-033	1/4" (6mm) Stem	Box of 12
Cu-206-40	Patch Plug Combi (Dipped Stem)	Co-033	1/4" (6mm) Stem	Box of 40
Cu-210-12	Patch Plug Combi (Dipped Stem)	Co-033	3/8" (10mm) Stem	Box of 12
Cu-210-40	Patch Plug Combi (Dipped Stem)	Co-033	3/8" (10mm) Stem	Box of 40
Cu-211-8	Patch Plug Combi (Dipped Stem)	Co-034	7/16" (11mm) Stem	Box of 8
Cu-211-24	Patch Plug Combi (Dipped Stem)	Co-034	7/16" (11mm) Stem	Box of 24
Cu-303-12	Patch Plug Combi (Wrapped Stem)	Co-032L	1/8" (3mm) Stem	Box of 12
Cu-303-40	Patch Plug Combi (Wrapped Stem)	Co-032L	1/8" (3mm) Stem	Box of 40
Cu-306-12	Patch Plug Combi (Wrapped Stem)	Co-033	1/4" (6mm) Stem	Box of 12
Cu-306-40	Patch Plug Combi (Wrapped Stem)	Co-033	1/4" (6mm) Stem	Box of 40
Cu-310-12	Patch Plug Combi (Wrapped Stem)	Co-033	3/8" (10mm) Stem	Box of 12
Cu-310-40	Patch Plug Combi (Wrapped Stem)	Co-033	3/8" (10mm) Stem	Box of 40

The patch plug combo units offer the benefits of a plug and patch in one. A built-in metal quill stem helps protect the stem when pushed through from inside the tire, making a complete one-step permanent repair inside-out.

It makes a permanent repair through the tread with the rubber constructed patch and stem. Fast, easy, and one of the best way to repair a radial or bias-ply tire.

QUILL-TYPE

SKU #	PRODUCT DESCRIPTION	Carbide Cutter	SIZE	QTY
Cu-503-12	Patch Plug Quill-Type Combination Repairs	Cc-032L	2" Patch with 1/8" (3mm) Stem	Box of 12
Cu-503-24	Patch Plug Quill-Type Combination Repairs	Cc-032L	2" Patch with 1/8" (3mm) Stem	Box of 24
Cu-506-12	Patch Plug Quill-Type Combination Repairs	Cc-033	2" Patch with 1/4" (6mm) Stem	Box of 12
Cu-506-24	Patch Plug Quill-Type Combination Repairs	Cc-033	2" Patch with 1/4" (6mm) Stem	Box of 24



Cu-503-12



Cu-506-12

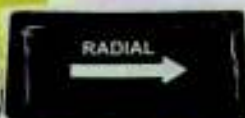
QUILL WITH CORD REINFORCEMENT

SKU #	PRODUCT DESCRIPTION	Carbide Cutter	SIZE	QTY
Cu-706-8	Reinforced Radial Patch/Plug	Cc-033	1 3/4" x 3" with 5/16" (8mm) Stem	Box of 8
Cu-710-4	Reinforced Radial Patch/Plug	Cc-033	2 1/4" x 4" with 3/8" (10mm) Stem	Box of 4
Cu-711-4	Reinforced Radial Patch/Plug	Cc-034	2 5/8" x 5 1/2" with 7/16" (11mm) Stem	Box of 4

Same quill type as above but the patch portion of this unit is cord reinforced and designed for tread areas only. Cord reinforced patch.



Cu-711-4



Cu-708-8



UNIVERSAL QUILL-TYPE

SKU #	PRODUCT DESCRIPTION	Carbide Cutter	SIZE	QTY
Cu-604-12	Round Universal Quill-Type Combi-Unit	Cc-032L	5/32" (4mm) Stem	Box of 12
Cu-605-10	Round Universal Quill-Type Combi-Unit	Cc-033	7/32" (5.5mm) Stem	Box of 10
Cu-608-8	Round Universal Quill-Type Combi-Unit	Cc-033	5/16" (8mm) Stem	Box of 8



Cu-604-12



Cu-605-10



Cu-608-8

TPMS SERVICE KIT AND ACCESSORIES

OEM requires that all sealing components be replaced when re-installing a TPMS sensor. The replacement components are supplied in TPMS accessory kits, which are specific for each sensor. Each TPMS accessory kit contains: 1 nut, 1 valve core, 1 cap, and 1 grommet.



Kit includes 60 accessory kits, 50 extra valve caps and a socket tool. Items are stored in a clear, snap lock case for easy viewing.

TIRE PRESSURE MONITORING SYSTEM KIT

As-TPMS

SKU #	PRODUCT DESCRIPTION
As-TPMS	Tire Pressure Monitoring System Kit
Ct-101	TPMS Sensor Removal Tool
20131AK	TPMS Valve Accessory Kit 'Schrader Sensor'
20026AK	TPMS Valve Accessory Kit 'Schrader Sensor'
20096AK	TPMS Valve Accessory Kit 'Schrader Sensor'
20107AK	TPMS Valve Accessory Kit 'Schrader Sensor'
Vs-20008-2	Replacement valve stem for TPMS Sensor (Blister Card of 2)
Vs-20008-15	Replacement valve stem for TPMS Sensor (Pic-Pak Box of 15)
Vs-20008-100	Replacement valve stem for TPMS Sensor (Box of 100)
Vs-20008-400	Replacement valve stem for TPMS Sensor (Box of 400)



Vs-20008

20131AK

Ct-101

VALVE CORES

BlackJack Valve cores are manufactured to replace OEM valve cores.



Cr-338



Cr-345 (Nitrogen)



Cr-339



Cr-349

SKU #	PRODUCT DESCRIPTION	QTY
Cr-338-5	(TR C1) Standard Tire Valve Core, Small Bore	Blister Card of 5
Cr-338-200	(TR C1) Standard Tire Valve Core, Small Bore	Pic-Pak of 200
Cr-339-5	High Heat Tire Valve Core, Small Bore	Blister Card of 5
Cr-339-200	High Heat Tire Valve Core, Small Bore	Pic-Pak of 200
Cr-345-100	Nitrogen Tire Valve Core, Small Bore	Pic-Pak of 100
Cr-349-2	(TR C2) Valve Core, Large Bore	Blister Card of 2
Cr-349-50	(TR C2) Valve Core, Large Bore	Pic-Pak of 50

LARGE BORE VALVE ACCESSORIES

Large Bore screwdriver type valve stem caps, made of quality brass with nickel plated or chrome plated. The screwdriver top is for removing valve cores. Each cap has a rubber seal washer included in the caps. Large bore valve stems are high temp, OEM quality.



Vc-347



Cr-349



Vh-AD1



Vc-348

SKU #	PRODUCT DESCRIPTION	QTY
Vc-347-2	Large Bore Screw Driver Cap	Blister Card of 2
Vc-347-15	Large Bore Screw Driver Cap	Pic-Pak of 15
Cr-349-2	Valve Core, (Large Bore, Short)	Blister Card of 2
Cr-349-50	Valve Core, (Large Bore, Short)	Pic-Pak of 50
Vh-AD1-5	Large Bore Adapter	Pic-Pak of 5
Vc-348-2	Brass Valve Cap Large Bore w/ Hex Nut	Blister Card of 2
Vc-348	Brass Valve Cap Large Bore w/ Hex Nut	Pic-Pak of 50

RUBBER GROMMETS

SKU #	PRODUCT DESCRIPTION	QTY
Vh-RG39-20	RG39 .625" Rubber Grommet	Pic-Pak of 20
Vh-RG46-15	RG46 .625" Rubber Grommet	Pic-Pak of 15
Vh-RG54-25	RG54 .453" Rubber Grommet	Pic-Pak of 25
Vh-RG60-25	RG60 O-Ring 9.7mm rim hole	Pic-Pak of 25
Vh-RG15-15	RG15 Rubber Grommet Fits .625" rim hole	Pic-Pak of 15
Vh-B6-2	Plastic Rim Hole Bushing Reduces hole from .625" to .453"	Blister Card of 2
Vh-B6-15	Plastic Rim Hole Bushing Reduces hole from .625" to .453"	Pic-Pak of 15
Vh-B6-100	Plastic Rim Hole Bushing Reduces hole from .625" to .453"	Bulk Pkg of 100
Vh-LN10-2	Nylon Rim Nut	Blister Card of 2
Vh-LN10-25	Nylon Rim Nut	Pic-Pak of 25
Vh-RG15HT-15	RG15 Rubber Grommet (Red High Temp Silicone)	Pic-Pak of 15
Vh-9051-2	Rubber Washer for Universal Brass Tube Valves	Bag of 2
Vh-SP2-1	Tubeless Spud fits 13/16" Rim Hole	Blister Card of 1



Vh-RG60



Vh-LN10



Vh-B6



Vh-RG39



Vh-RG15



Vh-RG54



Vh-9051



Vh-RG46



Vh-SP2 Spud

O-RINGS

O-Rings for Tubeless Tires - Highway, Grader and Earthmover O-rings available.

SKU #	PRODUCT DESCRIPTION	QTY
Ri-2025	20" Grader O-Ring, 1/4" Rod Size	Bag of 2
Ri-2025JM	20" Highway JM O-Ring, 1/4" Rod Size	Bag of 2
Ri-2225JM	22" Highway JM O-Ring, 1/4" Rod Size	Bag of 2
Ri-2425	24" Grader O-Ring, 1/4" Rod Size	Bag of 2
Ri-2425JM	24" Highway JM O-Ring, 1/4" Rod Size	Bag of 2
Ri-2525	25" Earthmover O-Ring, 1/4" Rod Size	Bag of 2
Ri-253R	25" Earthmover O-Ring, 3/8" Rod Size	Bag of 2
Ri-293R	29" Earthmover O-Ring, 3/8" Rod Size	Bag of 2
Ri-333R	33" Earthmover O-Ring, 3/8" Rod Size	Bag of 2
Ri-353R	35" Earthmover O-Ring, 3/8" Rod Size	Bag of 2
Ri-453R	45" Earthmover O-Ring, 3/8" Rod Size	Bag of 2
Ri-493R	49" Earthmover O-Ring, 3/8" Rod Size	Bag of 2
Ri-5112	51" Earthmover O-Ring, 1/2" Rod Size	Bag of 2
Ri-5712	57" Earthmover O-Ring, 1/2" Rod Size	Bag of 2



MISC VALVE HARDWARE

SKU #	PRODUCT DESCRIPTION	QTY
Vs-936-1	Tubeless Low Profile Tractor Valve 9/16" Eff Length	Blister Card of 1
Vs-936-10	Tubeless Low Profile Tractor Valve 9/16" Eff Length	Pic-Pak of 10
Ac-TV-1	Tank Valve, Brass 1/4" NPT	Blister Card of 1
Ac-TV-10	Tank Valve, Brass 1/4" NPT	Pic-Pak of 10



Vs-936



Ac-TV

VALVE TOOLS

Valve core tools are textured with a non-slip surface. Used to remove valve cores and restore the inside and outside threads of valve stems. They can also be used to remove broken valve cores from the valve stem.

VALVE CORE DEFLATORS



Ct-103
2-in-1 Valve Core
Remover and
Deflator



Ct-104
4-Way Valve Core
Tool (Chrome)



Ct-105
4-Way Valve Core
Tool (Black)



Ct-106
Small Bore Tube
Deflator



Ct-107
4-Way Valve Core
Tool (Large Bore)

FISHING TOOLS

Valve fishing tools with cable or chain allows easy positioning of inner tube when mounting of a tire.



Ct-109 - Valve Fishing Tool with Chain



Ct-108 - Valve Fishing Tool with Cable

SCREWDRIVERS



For more details, see Page 9. Screwdriver also has built-in Valve Core Tool on top.



Ct-113 - Valve Core Screwdriver



Ct-114 - Valve Core Screwdriver Tool

REMOVERS/INSTALLERS



Vt-115 - Valve Stem
Remover-Installer



Vt-116 - Easy Pull Valve Stem
Remover-Installer



Vt-117
Valve Stem
Remover-
Installer with
Protective
Angled Head

Made with chrome steel, the offset handle helps apply leverage while preventing damage to the wheel.



Vt-118
Valve Stem
Remover-
Installer with
Plastic handle
and Steel
Core

The BlackJack Valve Stem Remover-Installer is designed with a solid steel core and heavy duty plastic shell, preventing damage to the wheel.



Vt-119
Easy Pull
Tubeless
Valve Tool

BlackJack Easy-Pull Tubeless Valve Tool is used for rubber snap-in valves and is designed with Polypropylene plastic to protect chrome and alloy wheels during use.

BlackJack Premium EPDM Snap-in valve stems are made with EPDM synthetic rubber rather than natural rubber and meet SAE 1205 – 1206 ozone requirements. EPDM rubber also has a broader temperature range than natural rubber and will remain flexible in extremely cold weather. BlackJack valve stems are manufactured to the specifications of the TRA (Tire and Rim Association).

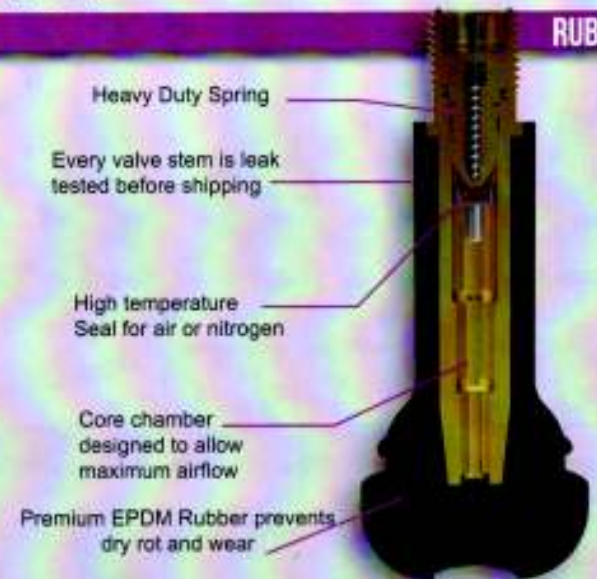
Specifications: Maximum rim thickness of .156"
 Maximum pressure of 65 psi (4.5 bars)
 Maximum speed of 130 MPH (209 KPH)



SKU #	TR #	PRODUCT DESCRIPTION	RIM HOLE	QTY
Vs-412-2	(TR412)	3/4" Snap-In Valve Stem	.453"	Blister Card of 2
Vs-412-50	(TR412)	3/4" Snap-In Valve Stem	.453"	Pic-Pak of 50
Vs-412-500	(TR412)	3/4" Snap-In Valve Stem	.453"	Box of 500
Vs-413-2	(TR413)	1 1/4" Snap-In Valve Stem	.453"	Blister Card of 2
Vs-413-50	(TR413)	1 1/4" Snap-In Valve Stem	.453"	Pic-Pak of 50
Vs-413-500	(TR413)	1 1/4" Snap-In Valve Stem	.453"	Box of 500
Vs-414-2	(TR414)	1 1/2" Snap-In Valve Stem	.453"	Blister Card of 2
Vs-414-50	(TR414)	1 1/2" Snap-In Valve Stem	.453"	Pic-Pak of 50
Vs-414-500	(TR414)	1 1/2" Snap-In Valve Stem	.453"	Box of 500
Vs-415-2	(TR415)	1 1/4" Snap-In Valve Stem	.625"	Blister Card of 2
Vs-415-40	(TR415)	1 1/4" Snap-In Valve Stem	.625"	Pic-Pak of 40
Vs-415-400	(TR415)	1 1/4" Snap-In Valve Stem	.625"	Box of 400
Vs-418-2	(TR418)	2" Snap-In Valve Stem	.453"	Blister Card of 2
Vs-418-40	(TR418)	2" Snap-In Valve Stem	.453"	Pic-Pak of 40
Vs-418-400	(TR418)	2" Snap-In Valve Stem	.453"	Box of 400
Vs-423-2	(TR423)	2 1/2" Snap-In Valve Stem	.453"	Blister Card of 2
Vs-423-30	(TR423)	2 1/2" Snap-In Valve Stem	.453"	Pic-Pak of 30
Vs-423-300	(TR423)	2 1/2" Snap-In Valve Stem	.453"	Box of 300
Vs-425-2	(TR425)	2" Snap-In Valve Stem	.625"	Blister Card of 2
Vs-425-30	(TR425)	2" Snap-In Valve Stem	.625"	Pic-Pak of 30
Vs-425-500	(TR425)	2" Snap-In Valve Stem	.625"	Box of 500

Our EPDM Rubber meets SAE 1205-1206 Ozone Requirements

RUBBER



Vs-425 Vs-423 Vs-418 Vs-415 Vs-414 Vs-413 Vs-412

CHROME SLEEVE

Chrome Sleeve and Chrome Cap Snap-In valve stem. Rated to 65 psi max cold inflation pressure and rim thickness of .156" and .453" or .625" rim hole.

SKU #	TR #	PRODUCT DESCRIPTION	QTY
Vs-413C-2	(TR413C)	1 1/4" Chrome Sleeved Valve Stem	Blister Card of 2
Vs-413C-20	(TR413C)	1 1/4" Chrome Sleeved Valve Stem	Pic-Pak of 20
Vs-413C-500	(TR413C)	1 1/4" Chrome Sleeved Valve Stem	Case of 500
Vs-414C-2	(TR414C)	1 1/2" Chrome Sleeved Valve Stem	Blister Card of 2
Vs-414C-20	(TR414C)	1 1/2" Chrome Sleeved Valve Stem	Pic-Pak of 20
Vs-415C-2	(TR415C)	1 1/4" Chrome Sleeved Valve Stem	Blister Card of 2
Vs-415C-20	(TR415C)	1 1/4" Chrome Sleeved Valve Stem	Pic-Pak of 20
Vs-418C-2	(TR418C)	2" Chrome Sleeved Valve Stem	Blister Card of 2
Vs-418C-20	(TR418C)	2" Chrome Sleeved Valve Stem	Pic-Pak of 20

Our EPDM Rubber meets SAE 1205-1206 Ozone Requirements



Vs-413C

Vs-414C

Vs-415C

Vs-418C

HIGH PRESSURE SNAP-IN VALVE STEMS

High Pressure Snap-In Valve Stems with rim thickness of .030" and .453" or .625" rim hole. Vs-600HP & Vs-602HP rated to 80 psi max cold pressure, Vs-801HP & Vs-802HP rated to 100 psi max cold pressure.



Our EPDM Rubber meets SAE J205-J206 Ozone Requirements

SKU #	TR #	SIZE	RIM HOLE	QTY
Vs-600HP-2	(TR600HP)	1 1/4" Length	.453"	Blister Card of 2
Vs-600HP-20	(TR600HP)	1 1/4" Length	.453"	Pic-Pak of 20
Vs-600HP-100	(TR600HP)	1 1/4" Length	.453"	Pail of 100
Vs-600HP-500	(TR600HP)	1 1/4" Length	.453"	Case of 500
Vs-602HP-2	(TR602HP)	2" Length	.453"	Blister Card of 2
Vs-602HP-20	(TR602HP)	2" Length	.453"	Pic-Pak of 20
Vs-602HP-100	(TR602HP)	2" Length	.453"	Pail of 100
Vs-602HP-400	(TR602HP)	2" Length	.453"	Pail of 400
Vs-801HP-2	(TR801HP)	1 1/4" Length	.625"	Blister Card of 2
Vs-801HP-20	(TR801HP)	1 1/4" Length	.625"	Pic-Pak of 20
Vs-801HP-100	(TR801HP)	1 1/4" Length	.625"	Bulk Pkg of 100
Vs-801HP-300	(TR801HP)	1 1/4" Length	.625"	Box of 300
Vs-802HP-2	(TR802HP)	2" Length	.625"	Blister Card of 2
Vs-802HP-20	(TR802HP)	2" Length	.625"	Pic-Pak of 20
Vs-802HP-50	(TR802HP)	2" Length	.625"	Pail of 50
Vs-802HP-250	(TR802HP)	2" Length	.625"	Box of 250

CHROME CLAMP-IN



Vs-5991B Vs-416A Vs-416SS Vs-416



Vs-416L Vs-PVR-152 Vs-PVR-153

SKU #	TR #	Effective Length	Degree of Bend	QTY
Vs-416L-1	(TR416L)	2 1/4"	-	Each
Vs-416L-10	(TR416L)	2 1/4"	-	Pic-Pak of 10
Vs-416-1	(TR416)	1 1/4"	-	Blister Card of 1
Vs-416-10	(TR416)	1 1/4"	-	Pic-Pak of 10
Vs-416-100	(TR416)	1 1/4"	-	Bulk Pkg of 100
Vs-416-500	(TR416)	1 1/4"	-	Bulk Pkg of 500
Vs-416A-1	(TR416A)	1"	-	Blister Card of 1
Vs-416A-10	(TR416A)	1"	-	Pic-Pak of 10
Vs-416SS-1	(TR416SS)	1 1/8"	-	Blister Card of 1
Vs-416SS-10	(TR416SS)	1 1/8"	-	Pic-Pak of 10
Vs-5991B-1	(TR5991B)	1"	-	Blister Card of 1
Vs-5991B-10	(TR5991B)	1"	-	Pic-Pak of 10
Vs-5991B-100	(TR5991B)	1"	-	Bulk Pkg of 100
Vs-PVR-152-1	(PVR-152)	1 1/2"	90°	Blister Card of 1
Vs-PVR-152-10	(PVR-152)	1 1/2"	90°	Pic-Pak of 10
Vs-PVR-153-1	(PVR-153)	2 3/4"	90°	Blister Card of 1
Vs-PVR-153-10	(PVR-153)	2 3/4"	90°	Pic-Pak of 10

CHROME ENKEI CLAMP-IN

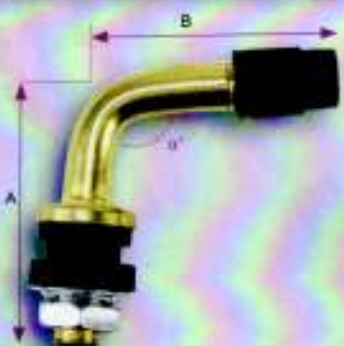


Vs-6 Vs-8 Vs-8-45 Vs-8-90

SKU #	TR #	Effective Length	Degree of Bend	QTY
Vs-6-1	(Vs-6)	1" (.236 rim hole)	-	Blister Card of 1
Vs-6-10	(Vs-6)	1" (.236 rim hole)	-	Pic-Pak of 10
Vs-8-1	(Vs-8)	3/4"	-	Blister Card of 1
Vs-8-10	(Vs-8)	3/4"	-	Pic-Pak of 10
Vs-8-100	(Vs-8)	3/4"	-	Bulk Pkg of 100
Vs-8-500	(Vs-8)	3/4"	-	Bulk Pkg of 500
Vs-8-45-1	(Vs-8-45)	1 1/8"	45°	Blister Card of 1
Vs-8-45-10	(Vs-8-45)	1 1/8"	45°	Pic-Pak of 10
Vs-8-45-100	(Vs-8-45)	1 1/8"	45°	Bulk Pkg of 100
Vs-8-45-500	(Vs-8-45)	1 1/8"	45°	Bulk Pkg of 500
Vs-8-90-1	(Vs-8-90)	1 1/4"	90°	Blister Card of 1
Vs-8-90-10	(Vs-8-90)	1 1/4"	90°	Pic-Pak of 10
Vs-8-90-100	(Vs-8-90)	1 1/4"	90°	Bulk Pkg of 100
Vs-8-90-500	(Vs-8-90)	1 1/4"	90°	Bulk Pkg of 500

SNAP-IN

SKU #	TR #	PRODUCT DESCRIPTION	A	B	α	RIM HOLES	QTY
Vs-PVR30-1	PVR30	Snap-In Motorcycle & Scooter Valve Stem, Brass	Φ 15mm	63mm	90°	Φ 11.5mm / .453" dia	Blister Card
Vs-PVR30-10	PVR30	Snap-In Motorcycle & Scooter Valve Stem, Brass	Φ 15mm	63mm	90°	Φ 11.5mm / .453" dia	Pic-Pak of 10
Vs-PVR32-1	PVR32	Snap-In Motorcycle & Scooter Valve Stem, Brass	Φ 15mm	54mm	90°	Φ 11.5mm / .453" dia	Blister Card
Vs-PVR32-10	PVR32	Snap-In Motorcycle & Scooter Valve Stem, Brass	Φ 15mm	54mm	90°	Φ 11.5mm / .453" dia	Pic-Pak of 10
Vs-PVR70-1	PVR70	Snap-In Motorcycle & Scooter Valve Stem, Brass	20mm	30mm	90°	Φ 11.5mm / .453" dia	Blister Card
Vs-PVR70-10	PVR70	Snap-In Motorcycle & Scooter Valve Stem, Brass	20mm	30mm	90°	Φ 11.5mm / .453" dia	Pic-Pak of 10



Vs-PVR30



Vs-PVR32



Vs-PVR70

CLAMP-IN

SKU #	TR #	PRODUCT DESCRIPTION	A	B	α	RIM HOLES	QTY
Vs-430A-1	TR430A	Clamp-in Motorcycle & Scooter Valve Stem, Chrome	Φ 14mm	--	--	Φ 11.5mm / .453" dia	Blister Card
Vs-430A-10	TR430A	Clamp-in Motorcycle & Scooter Valve Stem, Chrome	Φ 14mm	--	--	Φ 11.5mm / .453" dia	Pic-Pak of 10
Vs-JS430-1	JS430	Clamp-in Motorcycle & Scooter Valve Stem, Chrome	Φ 14mm	--	--	Φ 11.5mm / .453" dia	Blister Card
Vs-JS430-10	JS430	Clamp-in Motorcycle & Scooter Valve Stem, Chrome	Φ 14mm	--	--	Φ 11.5mm / .453" dia	Pic-Pak of 10
Vs-VAMD161-1	VAMD161	Clamp-in Motorcycle & Scooter Valve Stem, Chrome	Φ 16mm	--	--	Φ 11.5mm / .453" dia	Blister Card
Vs-VAMD161-10	VAMD161	Clamp-in Motorcycle & Scooter Valve Stem, Chrome	Φ 16mm	--	--	Φ 11.5mm / .453" dia	Pic-Pak of 10



Vs-430A



Vs-JS430



Vs-VAMD161

SPECIALTY VALVE STEMS



Vs-532
Chrome Performance
Valve, Max PSI 200,
.453 Rim Hole



Vs-501-OV
1 1/2" Clamp-In
Valve Stem w/ Oval
Rim Hole

SKU #	PRODUCT DESCRIPTION	QTY
Vs-501-OV-1	1 1/2" Clamp-in Valve Stem, Oval Rim	Each
Vs-501-OV-10	1 1/2" Clamp-in Valve Stem, Oval Rim	Pic-Pak of 10
Vs-501-OV-100	1 1/2" Clamp-in Valve Stem, Oval Rim	Bulk Pkg of 100
Vs-532-1	Chrome Performance Valve, Max 200 PSI, .453" Rim Hole	Blister Card of 1
Vs-532-10	Chrome Performance Valve, Max 200 PSI, .453" Rim Hole	Pic-Pak of 10
Vs-902K-1	Specialty Ford Valve Stem for Accuride Steel 19.5" Wheels	Blister Card of 1
Vs-902K-10	Specialty Ford Valve Stem for Accuride Steel 19.5" Wheels	Pic-Pak of 10
Vs-902WP-1	Specialty Ford Valve Stem for Alcoa Aluminum 16", Front & Rear Wheels	Blister Card of 1
Vs-902WP-10	Specialty Ford Valve Stem for Alcoa Aluminum 16", Front & Rear Wheels	Pic-Pak of 10
Vs-938F-1	Specialty Ford Valve Stem for Accuride Steel Wheels 16" x 6"	Blister Card of 1
Vs-938F-10	Specialty Ford Valve Stem for Accuride Steel Wheels 16" x 6"	Pic-Pak of 10
Vs-944F-1	Specialty Ford Valve Stem for Accuride Steel Wheels 16" x 7"	Blister Card of 1
Vs-944F-10	Specialty Ford Valve Stem for Accuride Steel Wheels 16" x 7"	Pic-Pak of 10
Vs-962C-1	Specialty Ford 23" Bend Valve Stem for Accuride Steel Wheels 16" x 6"	Blister Card of 1
Vs-962C-10	Specialty Ford 23" Bend Valve Stem for Accuride Steel Wheels 16" x 6"	Pic-Pak of 10

NOTE: The above Specialty Ford Valves come with a double seal "Seal Rite" valve cap (See Page 62).



Vs-902K

Ford "F" series trucks with dual wheels, Accuride steel 19.5", front and rear wheels. Brass finish, fits rim hole .453"



Vs-902WP

Ford "F" series trucks with dual wheels, Alcoa Aluminum 16", front and rear wheels. Chrome finish. Fits rim hole .453"



Vs-938F

Ford "Cut-Away" series with dual wheels, Accuride steel 16"x6", front and rear wheels. Nickel finish, fits rim hole .453"



Vs-962C

Ford "F" series trucks with dual wheels, Accuride steel 16"x6", front and rear wheels. Nickel finish, 23" bend, fits rim hole .453"



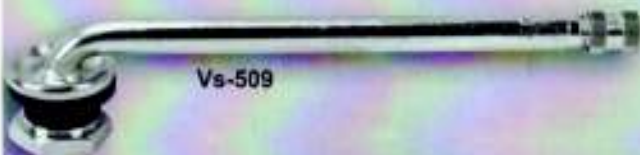
Vs-944F

Ford "Cut-Away" and Cargo Van series with single rear wheels, Accuride Steel 16" x 7" wheels, front and rear wheels. Chrome finish, fits rim hole .453"

DUAL WHEEL

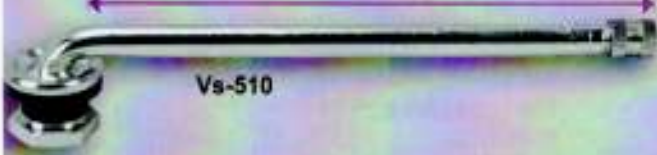


Vs-511



Vs-509

Length of Straight End = 5 1/2"



Vs-510

SKU #	TR #	PRODUCT DESCRIPTION (sorted by length)	QTY
Vs-509-1	(TR509)	4 3/4" eff. Length 90 Degree Angle Bend	Blister Card of 1
Vs-509-10	(TR509)	4 3/4" eff. Length 90 Degree Angle Bend	Pic-Pak of 10
Vs-509-100	(TR509)	4 3/4" eff. Length 90 Degree Angle Bend	Box of 100
Vs-510-1	(TR510)	5 1/2" eff. Length 90 Degree Angle Bend	Blister Card of 1
Vs-510-10	(TR510)	5 1/2" eff. Length 90 Degree Angle Bend	Pic-Pak of 10
Vs-510-100	(TR510)	5 1/2" eff. Length 90 Degree Angle Bend	Box of 100
Vs-511-1	(TR511)	4 1/4" eff. Length 90 Degree Angle Bend	Blister Card of 1
Vs-511-10	(TR511)	4 1/4" eff. Length 90 Degree Angle Bend	Pic-Pak of 10

TR509 4.75" Tubeless Valve for aluminum disc wheels (Nickel Plated) Used in drop-center wheels with .625" rim hole. Recommended torque for installation is 100-125 inch-pounds. Includes **Vh-RG46** rubber grommet.

Tubeless Brass Valve Stems used in trucks and buses with .625" rim hole. Recommended torque for installation is 35-55 inch-pounds. Includes **Vh-RG15** rubber grommet, **Cr-339** high heat valve core and **Vc-337** nickel-plated brass valve cap with seal.

SKU #	TR #	PRODUCT DESCRIPTION (sorted by length)	Angle	QTY
Vs-575-1	TR575	1 1/8" eff. Length Truck & Bus Tubeless Tire Valve	-	Blister Pack of 1
Vs-575-10	TR575	1 1/8" eff. Length Truck & Bus Tubeless Tire Valve	-	Pic-Pak of 10
Vs-575-100	TR575	1 1/8" eff. Length Truck & Bus Tubeless Tire Valve	-	Bulk Pkg of 100
Vs-501-1	TR501	1 1/2" eff. Length Truck & Bus Tubeless Tire Valve	-	Blister Pack of 1
Vs-501-10	TR501	1 1/2" eff. Length Truck & Bus Tubeless Tire Valve	-	Pic-Pak of 10
Vs-501-100	TR501	1 1/2" eff. Length Truck & Bus Tubeless Tire Valve	-	Bulk Pkg of 100
Vs-501-OV-1	(TR501)	1 1/2" Clamp-in Valve Stem, Oval Rim	-	Each
Vs-501-OV-10	(TR501)	1 1/2" Clamp-in Valve Stem, Oval Rim	-	Pic-Pak of 10
Vs-501-OV-100	(TR501)	1 1/2" Clamp-in Valve Stem, Oval Rim	-	Bulk Pkg of 100
Vs-500-1	TR500	2" eff. Length Truck & Bus Tubeless Tire Valve	-	Blister Pack of 1
Vs-500-10	TR500	2" eff. Length Truck & Bus Tubeless Tire Valve	-	Pic-Pak of 10
Vs-500-100	TR500	2" eff. Length Truck & Bus Tubeless Tire Valve	-	Bulk Pkg of 100
Vs-570-1	TR570	3 1/8" eff. Length Truck & Bus Tubeless Tire Valve	-	Blister Pack of 1
Vs-570-10	TR570	3 1/8" eff. Length Truck & Bus Tubeless Tire Valve	-	Pic-Pak of 10
Vs-570-100	TR570	3 1/8" eff. Length Truck & Bus Tubeless Tire Valve	-	Bulk Pkg of 100
Vs-570C-1	TR570C	2" Truck & Bus Tubeless Tire Valve	90°	Blister Pack of 1
Vs-570C-10	TR570C	2" Truck & Bus Tubeless Tire Valve	90°	Pic-Pak of 10
Vs-570C-100	TR570C	2" Truck & Bus Tubeless Tire Valve	90°	Bulk Pkg of 100
Vs-571-1	TR571	3 3/8" eff. Length Truck & Bus Tubeless Tire Valve	-	Blister Pack of 1
Vs-571-10	TR571	3 3/8" eff. Length Truck & Bus Tubeless Tire Valve	-	Pic-Pak of 10
Vs-571-200	TR571	3 3/8" eff. Length Truck & Bus Tubeless Tire Valve	-	Bulk Pkg of 200
Vs-571C-1	TR571C	2 1/4" Truck & Bus Tubeless Tire Valve	90°	Blister Pack of 1
Vs-571C-10	TR571C	2 1/4" Truck & Bus Tubeless Tire Valve	90°	Pic-Pak of 10
Vs-571C-100	TR571C	2 1/4" Truck & Bus Tubeless Tire Valve	90°	Bulk Pkg of 100
Vs-572-1	TR572	3 3/4" eff. Length Truck & Bus Tubeless Tire Valve	-	Blister Pack of 1
Vs-572-10	TR572	3 3/4" eff. Length Truck & Bus Tubeless Tire Valve	-	Pic-Pak of 10
Vs-572-200	TR572	3 3/4" eff. Length Truck & Bus Tubeless Tire Valve	-	Bulk Pkg of 200
Vs-573-1	TR573	4 3/8" eff. Length Truck & Bus Tubeless Tire Valve	-	Blister Pack of 1
Vs-573-10	TR573	4 3/8" eff. Length Truck & Bus Tubeless Tire Valve	-	Pic-Pak of 10
Vs-573-200	TR573	4 3/8" eff. Length Truck & Bus Tubeless Tire Valve	-	Bulk Pkg of 200
Vs-573C-1	TR573C	3 1/4" Truck & Bus Tubeless Tire Valve	90°	Blister Pack of 1
Vs-573C-10	TR573C	3 1/4" Truck & Bus Tubeless Tire Valve	90°	Pic-Pak of 10
Vs-573C-100	TR573C	3 1/4" Truck & Bus Tubeless Tire Valve	90°	Bulk Pkg of 100
Vs-574-1	TR574	5" eff. Length Truck & Bus Tubeless Tire Valve	-	Blister Pack of 1
Vs-574-10	TR574	5" eff. Length Truck & Bus Tubeless Tire Valve	-	Pic-Pak of 10
Vs-574-100	TR574	5" eff. Length Truck & Bus Tubeless Tire Valve	-	Bulk Pkg of 100



Vs-574



Vs-570



Vs-500



Vs-573C



Vs-571C

PREMIUM GROMMET SEAL VALVES FOR ALCOA WHEELS

BlackJack Premium Grommet Seal Valves for Alcoa Wheels offer the following features:

- **MAXIMUM AIR PRESSURE 200 PSI**
- **9.7MM RIM HOLE**
- **LARGER SEALING SURFACE**
- **BETTER RESISTANCE TO WEAR AND TEAR**
- **EXTENDED SEALING LIFE**
- **BETTER PROTECTION AGAINST CORROSION**
- **BEST FOR CORRODED WHEELS**



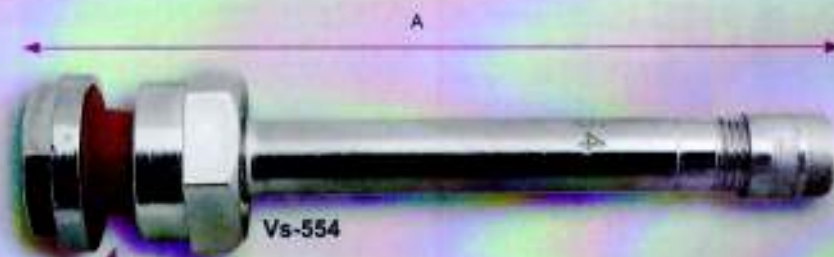
Vs-554C

SKU # *	TR #	PRODUCT DESCRIPTION	Angle	A	B	QTY
Vs-552-1	(TR552)	1 1/4" Truck Valve	-	1.26	-	Blister Card of 1
Vs-552-10	(TR552)	1 1/4" Truck Valve	-	1.26	-	Pic-Pak of 10
Vs-553-1	(TR553)	2 3/8" Truck Valve	-	2.4	-	Blister Card of 1
Vs-553-10	(TR553)	2 3/8" Truck Valve	-	2.4	-	Pic-Pak of 10
Vs-553C-1	(TR553C)	2 3/8" Truck Valve	45°	.93	1.43	Blister Card of 1
Vs-553C-10	(TR553C)	2 3/8" Truck Valve	45°	.93	1.43	Pic-Pak of 10
Vs-553D-1	(TR553D)	2 3/8" Truck Valve	60°	.98	1.38	Blister Card of 1
Vs-553D-10	(TR553D)	2 3/8" Truck Valve	60°	.98	1.38	Pic-Pak of 10
Vs-553E-1	(TR553E)	2 3/8" Truck Valve	75°	.98	1.38	Blister Card of 1
Vs-553E-10	(TR553E)	2 3/8" Truck Valve	75°	.98	1.38	Pic-Pak of 10
Vs-554-1	(TR554)	3" Truck Valve	-	2.86	-	Blister Card of 1
Vs-554-10	(TR554)	3" Truck Valve	-	2.86	-	Pic-Pak of 10
Vs-554C-1	(TR554C)	3" Truck Valve	45°	.98	1.94	Blister Card of 1
Vs-554C-10	(TR554C)	3" Truck Valve	45°	.98	1.94	Pic-Pak of 10
Vs-554D-1	(TR554D)	3" Truck Valve	60°	.98	1.94	Blister Card of 1
Vs-554D-10	(TR554D)	3" Truck Valve	60°	.98	1.94	Pic-Pak of 10
Vs-555-1	(TR555)	3 1/2" Truck Valve	-	3.5	-	Blister Card of 1
Vs-555-10	(TR555)	3 1/2" Truck Valve	-	3.5	-	Pic-Pak of 10
Vs-555D-1	(TR555D)	3 1/2" Truck Valve	60°	.98	2.8	Blister Card of 1
Vs-555D-10	(TR555D)	3 1/2" Truck Valve	60°	.98	2.8	Pic-Pak of 10
Vs-555E-1	(TR555E)	3 1/2" Truck Valve	75°	.98	2.6	Blister Card of 1
Vs-555E-10	(TR555E)	3 1/2" Truck Valve	75°	.98	2.6	Pic-Pak of 10
Vs-556-1	(TR556)	4 3/8" Truck Valve	-	4.27	-	Blister Card of 1
Vs-556-10	(TR556)	4 3/8" Truck Valve	-	4.27	-	Pic-Pak of 10
Vs-556-36-1	(TR556-36)	4 3/8" Truck Valve	36°	.98	3.35	Blister Card of 1
Vs-556-36-10	(TR556-36)	4 3/8" Truck Valve	36°	.98	3.35	Pic-Pak of 10
Vs-556D-1	(TR556D)	4 3/8" Truck Valve	60°	.98	3.35	Blister Card of 1
Vs-556D-10	(TR556D)	4 3/8" Truck Valve	60°	.98	3.35	Pic-Pak of 10
Vs-556E-1	(TR556E)	4 3/8" Truck Valve	75°	.98	3.35	Blister Card of 1
Vs-556E-10	(TR556E)	4 3/8" Truck Valve	75°	.98	3.35	Pic-Pak of 10
Vs-557D-1	(TR557D)	4 3/4" Truck Valve		.98	3.78	Blister Card of 1
Vs-557D-10	(TR557D)	4 3/4" Truck Valve		.98	3.78	Pic-Pak of 10
Vh-RG70-25	(RG70)	High Temp Silicone Grommet for TR55x Series				Pic-Pak of 25

*Add suffix "-100" for bulk box of 100.



Vh-RG70



Vs-554

Our Premium Grommet Seal Valve Stems are more forgiving than O-Rings or other similar seals. They will not leak if the hole is rough or scratched. These Grommets have a better seal all around and are much better for the wheel. It prevents corrosion and it lasts longer than your typical grommet seals. It can also handle higher temperatures and has a higher tear resistance.

TUBELESS VALVE STEMS FOR ALCOA WHEELS

SKU # *	TR #	PRODUCT DESCRIPTION	A	B	QTY
Vs-542-1	(TR542)	O-Ring Seal Valve for Alcoa Wheels w/ 9.7mm Rim Hole	32mm	-	Blister Card of 1
Vs-542-10	(TR542)	O-Ring Seal Valve for Alcoa Wheels w/ 9.7mm Rim Hole	32mm	-	Pic-Pak of 10
Vs-543-1	(TR543)	O-Ring Seal Valve for Alcoa Wheels w/ 9.7mm Rim Hole	59mm	-	Blister Card of 1
Vs-543-10	(TR543)	O-Ring Seal Valve for Alcoa Wheels w/ 9.7mm Rim Hole	59mm	-	Pic-Pak of 10
Vs-543C-1	(TR543C)	O-Ring Seal Valve 45° Bend for Alcoa Wheels w/ 9.7mm Rim Hole	24mm	35mm	Blister Card of 1
Vs-543C-10	(TR543C)	O-Ring Seal Valve 45° Bend for Alcoa Wheels w/ 9.7mm Rim Hole	24mm	35mm	Pic-Pak of 10
Vs-543D-1	(TR543D)	O-Ring Seal Valve 60° Bend for Alcoa Wheels w/ 9.7mm Rim Hole	25mm	35mm	Blister Card of 1
Vs-543D-10	(TR543D)	O-Ring Seal Valve 60° Bend for Alcoa Wheels w/ 9.7mm Rim Hole	25mm	35mm	Pic-Pak of 10
Vs-543E-1	(TR543E)	O-Ring Seal Valve 75° Bend for Alcoa Wheels w/ 9.7mm Rim Hole	25mm	35mm	Blister Card of 1
Vs-543E-10	(TR543E)	O-Ring Seal Valve 75° Bend for Alcoa Wheels w/ 9.7mm Rim Hole	25mm	35mm	Pic-Pak of 10
Vs-544-1	(TR544)	O-Ring Seal Valve for Alcoa Wheels w/ 9.7mm Rim Hole	73mm	-	Blister Card of 1
Vs-544-10	(TR544)	O-Ring Seal Valve for Alcoa Wheels w/ 9.7mm Rim Hole	73mm	-	Pic-Pak of 10
Vs-544D-1	(TR544D)	O-Ring Seal Valve 60° Bend for Alcoa Wheels w/ 9.7mm Rim Hole	25mm	49mm	Blister Card of 1
Vs-544D-10	(TR544D)	O-Ring Seal Valve 60° Bend for Alcoa Wheels w/ 9.7mm Rim Hole	25mm	49mm	Pic-Pak of 10
Vs-544E-1	(TR544E)	O-Ring Seal Valve 75° Bend for Alcoa Wheels w/ 9.7mm Rim Hole	25mm	49mm	Blister Card of 1
Vs-544E-10	(TR544E)	O-Ring Seal Valve 75° Bend for Alcoa Wheels w/ 9.7mm Rim Hole	25mm	49mm	Pic-Pak of 10
Vs-545-1	(TR545)	O-Ring Seal Valve for Alcoa Wheels w/ 9.7mm Rim Hole	89mm	-	Blister Card of 1
Vs-545-10	(TR545)	O-Ring Seal Valve for Alcoa Wheels w/ 9.7mm Rim Hole	89mm	-	Pic-Pak of 10
Vs-545D-1	(TR545D)	O-Ring Seal Valve for Alcoa Wheels w/ 9.7mm Rim Hole	25mm	66mm	Blister Card of 1
Vs-545D-10	(TR545D)	O-Ring Seal Valve for Alcoa Wheels w/ 9.7mm Rim Hole	25mm	66mm	Pic-Pak of 10
Vs-545D-250	(TR545D)	O-Ring Seal Valve for Alcoa Wheels w/ 9.7mm Rim Hole	25mm	66mm	Box of 250
Vs-545E-1	(TR545E)	O-Ring Seal Valve 75° Bend for Alcoa Wheels w/ 9.7mm Rim Hole	25mm	66mm	Blister Card of 1
Vs-545E-10	(TR545E)	O-Ring Seal Valve 75° Bend for Alcoa Wheels w/ 9.7mm Rim Hole	25mm	66mm	Pic-Pak of 10
Vs-546-1	(TR546)	O-Ring Seal Valve for Alcoa Wheels w/ 9.7mm Rim Hole	106mm	-	Blister Card of 1
Vs-546-10	(TR546)	O-Ring Seal Valve for Alcoa Wheels w/ 9.7mm Rim Hole	106mm	-	Pic-Pak of 10
Vs-546-36-1	(TR546-36)	O-Ring Seal Valve 36° Bend for Alcoa Wheels w/ 9.7mm Rim Hole	25mm	85mm	Blister Card of 1
Vs-546-36-10	(TR546-36)	O-Ring Seal Valve 36° Bend for Alcoa Wheels w/ 9.7mm Rim Hole	25mm	85mm	Pic-Pak of 10
Vs-546D-1	(TR546D)	O-Ring Seal Valve 80° Bend for Alcoa Wheels w/ 9.7mm Rim Hole	25mm	85mm	Blister Card of 1
Vs-546D-10	(TR546D)	O-Ring Seal Valve 80° Bend for Alcoa Wheels w/ 9.7mm Rim Hole	25mm	85mm	Pic-Pak of 10
Vs-546E-1	(TR546E)	O-Ring Seal Valve 75° Bend for Alcoa Wheels w/ 9.7mm Rim Hole	25mm	85mm	Blister Card of 1
Vs-546E-10	(TR546E)	O-Ring Seal Valve 75° Bend for Alcoa Wheels w/ 9.7mm Rim Hole	25mm	85mm	Pic-Pak of 10
Vs-547-1	(TR547)	O-Ring Seal Valve for Alcoa Wheels w/ 9.7mm Rim Hole	115mm	-	Blister Card of 1
Vs-547-10	(TR547)	O-Ring Seal Valve for Alcoa Wheels w/ 9.7mm Rim Hole	115mm	-	Pic-Pak of 10
Vs-547D-1	(TR547D)	O-Ring Seal Valve 80 Bend for Alcoa Wheels w/ 9.7mm Rim Hole			Blister Card of 1
Vs-547D-10	(TR547D)	O-Ring Seal Valve 80 Bend for Alcoa Wheels w/ 9.7mm Rim Hole	25mm	96mm	Pic-Pak of 10

*Add suffix "-100" for bulk box of 100.



Install the valve with care and do not over-torque; the recommended torque is 7 to 10 Ft-Lb (9 to 16 Nm.)

EURO-STYLE O-RING SEAL CLAMP-IN VALVE STEMS

SKU #	Industry #	PRODUCT DESCRIPTION	Effective Length (mm)	QTY
Vs-3201-1	(V3.20.1)	European Style O-Ring Seal Clamp-in Valve	16x41	Blister Card of 1
Vs-3201-10	(V3.20.1)	European Style O-Ring Seal Clamp-in Valve	16x41	Pic-Pak of 10
Vs-3202-1	(V3.20.2)	European Style O-Ring Seal Clamp-in Valve	16x95	Blister Card of 1
Vs-3202-10	(V3.20.2)	European Style O-Ring Seal Clamp-in Valve	16x95	Pic-Pak of 10
Vs-3203-1	(V3.20.3)	European Style O-Ring Seal Clamp-in Valve	16x82	Blister Card of 1
Vs-3203-10	(V3.20.3)	European Style O-Ring Seal Clamp-in Valve	16x82	Pic-Pak of 10
Vs-3204-1	(V3.20.4)	European Style O-Ring Seal Clamp-in Valve	16x90/27°	Blister Card of 1
Vs-3204-10	(V3.20.4)	European Style O-Ring Seal Clamp-in Valve	16x90/27°	Pic-Pak of 10
Vs-3205-1	(V3.20.5)	European Style O-Ring Seal Clamp-in Valve	16x70/27°	Blister Card of 1
Vs-3205-10	(V3.20.5)	European Style O-Ring Seal Clamp-in Valve	16x70/27°	Pic-Pak of 10
Vs-3206-1	(V3.20.6)	European Style O-Ring Seal Clamp-in Valve	16x115/27°	Blister Card of 1
Vs-3206-10	(V3.20.6)	European Style O-Ring Seal Clamp-in Valve	16x115/27°	Pic-Pak of 10
Vs-3207-1	(V3.20.7)	European Style O-Ring Seal Clamp-in Valve	16x80/27°	Blister Card of 1
Vs-3207-10	(V3.20.7)	European Style O-Ring Seal Clamp-in Valve	16x80/27°	Pic-Pak of 10
Vs-3208-1	(V3.20.8)	European Style O-Ring Seal Clamp-in Valve	16x119/12°	Blister Card of 1
Vs-3208-10	(V3.20.8)	European Style O-Ring Seal Clamp-in Valve	16x119/12°	Pic-Pak of 10
Vs-3209-1	(V3.20.9)	European Style O-Ring Seal Clamp-in Valve	16x102/12°	Blister Card of 1
Vs-3209-10	(V3.20.9)	European Style O-Ring Seal Clamp-in Valve	16x102/12°	Pic-Pak of 10
Vs-32010-1	(V3.20.10)	European Style O-Ring Seal Clamp-in Valve	16x80/28°	Blister Card of 1
Vs-32010-10	(V3.20.10)	European Style O-Ring Seal Clamp-in Valve	16x80/28°	Pic-Pak of 10
Vs-32011-1	(V3.20.11)	European Style O-Ring Seal Clamp-in Valve	16x100/27°/42°	Blister Card of 1
Vs-32011-10	(V3.20.11)	European Style O-Ring Seal Clamp-in Valve	16x100/27°/42°	Pic-Pak of 10
Vs-32012-1	(V3.20.12)	European Style O-Ring Seal Clamp-in Valve	16x100/27°	Blister Card of 1
Vs-32012-10	(V3.20.12)	European Style O-Ring Seal Clamp-in Valve	16x100/27°	Pic-Pak of 10



Vs-3209



Vs-3202



Vs-3207



Vs-32010



Vs-3203



Vs-32011



Vs-3204



Vs-32012



Vs-3206

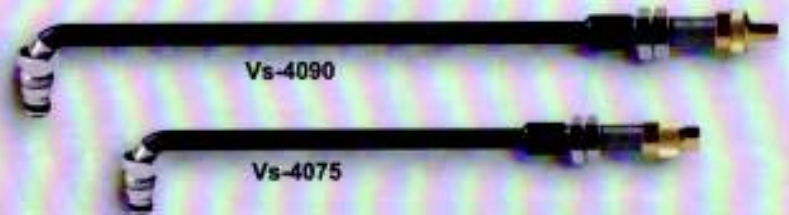


Vs-3201



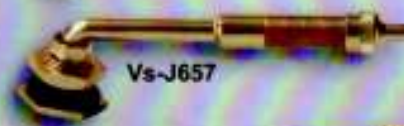
Vs-3208

SKU #	TR #	Horizontal Length & Bend	QTY
Vs-4075-1	J4000-7.50	7 1/2", 191mm, 90° Bend	1
Vs-4075-5	J4000-7.50	7 1/2", 191mm, 90° Bend	Box of 5
Vs-4090-1	J4000-9	9", 229mm, 90° Bend	1
Vs-4090-5	J4000-9	9", 229mm, 90° Bend	Box of 5



All Measurements are in Millimeters (mm)

SKU #	TR #	Degree of Bend	A	B	QTY
Vs-J650-1	TRJ650-03	80° Bend	27	79	Blister Card of 1
Vs-J650-5	TRJ650-03	80° Bend	27	79	Pic-Pak of 5
Vs-J650C-1	J650C	80° Bend	27	79	Blister Card of 1
Vs-J650C-5	J650C	80° Bend	27	79	Pic-Pak of 5
Vs-J651-1	J651	90° Bend	32	119	Blister Card of 1
Vs-J651-5	J651	90° Bend	32	119	Pic-Pak of 5
Vs-J652-1	J652	86° Bend	27	140	Blister Card of 1
Vs-J652-5	J652	86° Bend	27	140	Pic-Pak of 5
Vs-J653-1	J653	80° Bend	27	64	Blister Card of 1
Vs-J653-5	J653	80° Bend	27	64	Pic-Pak of 5
Vs-J654-1	J654	74° Bend	27	79	Blister Card of 1
Vs-J654-5	J654	74° Bend	27	79	Pic-Pak of 5
Vs-J655-1	J655	74° Bend	24	79	Blister Card of 1
Vs-J655-5	J655	74° Bend	24	79	Pic-Pak of 5
Vs-J656-1	J656	90° Bend	67	94	Blister Card of 1
Vs-J656-5	J656	90° Bend	67	94	Pic-Pak of 5
Vs-J657-1	J657	80° Bend	27	102	Blister Card of 1
Vs-J657-5	J657	80° Bend	27	102	Pic-Pak of 5
Vs-J658-1	J658	80° Bend	27	140	Blister Card of 1
Vs-J658-5	J658	80° Bend	27	140	Pic-Pak of 5
Vs-J659-1	J659	90° Bend	48	89	Blister Card of 1
Vs-J659-5	J659	90° Bend	48	89	Pic-Pak of 5
Vs-J660-1	J660	90° Bend	48	222	Blister Card of 1
Vs-J660-5	J660	90° Bend	48	222	Pic-Pak of 5
Vs-J669-1	J669	90° Bend	27	64	Blister Card of 1
Vs-J669-5	J669	90° Bend	27	64	Pic-Pak of 5
Vs-J670-1	J670	Straight	-	-	Blister Card of 1
Vs-J670-5	J670	Straight	-	-	Pic-Pak of 5
Vs-J670-100	J670	Straight	-	-	Bulk Box of 100
Vh-SP2-1	SP2		-	-	Blister Card of 1
Vh-SP2-5	SP2		-	-	Pic-Pak of 5
Vh-SP2-100	SP2		-	-	Box of 100



AIR/LIQUID VALVE STEMS



Vs-618* Vs-618S Vh-CH1* Vh-CH3* Vs-218 Non-Adhesive Backing



Vs-622A** Vs-621A** Vs-623A**

SKU #	PRODUCT DESCRIPTION	QTY
Vs-218-1	Tube Type Fast Flow Air Liquid Tractor Valve with Plastic Cap	Each
Vs-218-5	Tube Type Fast Flow Air Liquid Tractor Valve with Plastic Cap	Pkg of 5
Vs-618-1*	Tubeless Fast Flow Air / Liquid Tractor Valve	Blister Card of 1
Vs-618-5*	Tubeless Fast Flow Air / Liquid Tractor Valve	Pkg of 5
Vs-618S-2	Snap-in Air Liquid Fast Flow Valve Stem	Blister Card of 2
Vs-618S-10	Snap-in Air Liquid Fast Flow Valve Stem	Pic-Pak of 10
Vs-621A-1**	Air/Liquid Tubeless Clamp-In Valves for Off-Road Vehicles 65°	Blister Card of 1
Vs-621A-5**	Air/Liquid Tubeless Clamp-In Valves for Off-Road Vehicles 65°	Pic-Pak of 5
Vs-622A-1**	Air/Liquid Tubeless Clamp-In Valves for Off-Road Vehicles 90°	Blister Card of 1
Vs-622A-5**	Air/Liquid Tubeless Clamp-In Valves for Off-Road Vehicles 90°	Pic-Pak of 5
Vs-623A-1**	Air/Liquid Tubeless Clamp-In Valves for Off-Road Vehicles 65°	Blister Card of 1
Vs-623A-5**	Air/Liquid Tubeless Clamp-In Valves for Off-Road Vehicles 65°	Pic-Pak of 5
Vh-CH1-1*	Core Housing (Old Style)	Blister Card of 1
Vh-CH1-5*	Core Housing (Old Style)	Pic-Pak of 10
Vh-CH3-1*	Core Housing (New Style)	Blister Card of 1
Vh-CH3-5*	Core Housing (New Style)	Pic-Pak of 10

*Selected Products also come in Bulk Packages of 100.

**Recommended Torque for installation is 45-75 inch-pounds. **Product comes with Vh-CH3 Core Housing

EURO-STYLE CLAMP-IN

Measurements shown in table are in millimeters (mm).

Effective length is determined by measuring from the center of the valve to the end (with cap removed) of the valve.



SKU #	PRODUCT DESCRIPTION	RIM HOLE	A	B	C	α°	β°	Eff. Length	QTY
Vs-3122-1	(V3.12.2) European Style Brass Clamp-In Valve	15.7mm	95	--	--	--	--	95mm	Each
Vs-3131-1	(V3.13.1) European Style Brass Clamp-In Valve	20.5mm	46.5	42.5	--	153°	--	83mm	Each
Vs-3132-1	(V3.13.2) European Style Brass Clamp-In Valve	20.5mm	30	28	--	126°	--	50mm	Each
Vs-3141-1	(V3.14.1) European Style Brass Clamp-In Valve	20.5mm	26	21.5	24.5	147°	147°	70mm	Each
Vs-3142-1	(V3.14.2) European Style Brass Clamp-In Valve	20.5mm	45	21.5	24.5	147°	147°	85mm	Each
Vs-3143-1	(V3.14.3) European Style Brass Clamp-In Valve	20.5mm	37	21.5	24.5	147°	147°	80mm	Each
Vs-3151-1	(V3.15.1) European Style Brass Clamp-In Valve	20.5mm	22.5	44.5	--	110°	--	43mm	Each
Vs-3152-1	(V3.15.2) European Style Brass Clamp-In Valve	20.5mm	15.5	44.5	--	95°	--	43mm	Each
Vs-3161-1	(V3.16.1) European Style Brass Clamp-In Valve	20.5mm	36	29	--	150°	--	62mm	Each
Vs-3171-1	(V3.17.1) European Style Brass Clamp-In Valve	20.5mm	99	31.5	--	172°	--	127mm	Each
Vs-3172-1	(V3.17.2) European Style Brass Clamp-In Valve	20.5mm	116	31.5	--	172°	--	142mm	Each
Vs-3181-1	(V3.18.1) European Style Brass Clamp-In Valve	20.5mm	64	21.5	24.5	146°	146°	110mm	Each
Vs-3182-1	(V3.18.2) European Style Brass Clamp-In Valve	20.5mm	81	21.5	24.5	146°	146°	126mm	Each
Vs-3184-1	(V3.18.4) European Style Brass Clamp-In Valve	20.5mm	51	21.5	37.5	138°	138°	107mm	Each
Vs-3185-1	(V3.18.5) European Style Brass Clamp-In Valve	20.5mm	68	21.5	37.5	138°	138°	122mm	Each
Vs-3191-1	(V3.19.1) European Style Brass Clamp-In Valve	20.5mm	92	21.5	24.5	147°	154°	135mm	Each
Vs-3192-1	(V3.19.2) European Style Brass Clamp-In Valve	20.5mm	76	21.5	24.5	145°	152°	123mm	Each
Vs-3193-1	(V3.19.3) European Style Brass Clamp-In Valve	20.5mm	91	21.5	24.5	155°	162°	136mm	Each



V3.12 Series



v3.13 Series



v3.14 Series



V3.15 Series



v3.16 Series



V3.17 Series



V3.18 Series

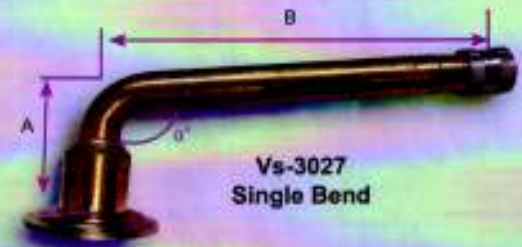


V3.19 Series

MICHELIN SINGLE BEND

All Measurements are in Millimeters (mm).

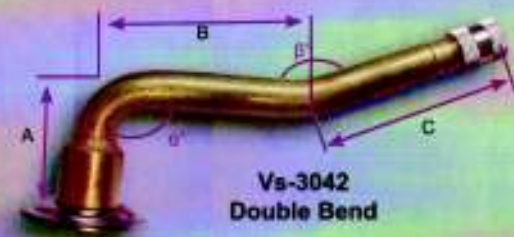
SKU #	PRODUCT DESCRIPTION	A	B	α°	QTY
Vs-3022	(V3.02.2) Michelin Single Bend Tube Valve	22.5	43	120°	Each
Vs-3023	(V3.02.3) Michelin Single Bend Tube Valve	33	44.5	95°	Each
Vs-3024	(V3.02.4) Michelin Single Bend Tube Valve	39.5	44.5	110°	Each
Vs-3025	(V3.02.5) Michelin Single Bend Tube Valve	20.5	47.5	90°	Each
Vs-3027	(V3.02.7) Michelin Single Bend Tube Valve	20.5	71.5	100°	Each
Vs-3028	(V3.02.8) Michelin Single Bend Tube Valve	20.5	89.5	94°	Each
Vs-3029	(V3.02.9) Michelin Single Bend Tube Valve	20.5	99.5	94°	Each
Vs-30210	(V3.02.10) Michelin Single Bend Tube Valve	20.5	115	94°	Each
Vs-30211	(V3.02.11) Michelin Single Bend Tube Valve	20	126	98°	Each
Vs-30212	(V3.02.12) Michelin Single Bend Tube Valve	20.5	132	94°	Each
Vs-30213	(V3.02.13) Michelin Single Bend Tube Valve	20.5	133.5	90°	Each
Vs-30214	(V3.02.14) Michelin Single Bend Tube Valve	20.5	138.5	94°	Each
Vs-30215	(V3.02.15) Michelin Single Bend Tube Valve	20.5	145.5	94°	Each
Vs-30216	(V3.02.16) Michelin Single Bend Tube Valve	20.5	149.5	90°	Each
Vs-30217	(V3.02.17) Michelin Single Bend Tube Valve	20.5	156.5	90°	Each
Vs-30218	(V3.02.18) Michelin Single Bend Tube Valve	22.5	74.5	90°	Each
Vs-30219	(V3.02.19) Michelin Single Bend Tube Valve	20.5	60	94°	Each
Vs-30223	(V3.02.23) Michelin Single Bend Tube Valve	29.5	66.5	90°	Each
Vs-30224	(V3.02.24) Michelin Single Bend Tube Valve	20.5	117	90°	Each
Vs-30227	(V3.02.27) Michelin Single Bend Tube Valve	20	75	94°	Each



MICHELIN DOUBLE BEND

All Measurements are in Millimeters (mm).

SKU #	PRODUCT DESCRIPTION	A	B	C	α°	β°	QTY
Vs-3041	(V3.04.1) Michelin Double Bend Tube Valve	20.5	32	37	90°	138°	Each
Vs-3042	(V3.04.2) Michelin Double Bend Tube Valve	20.5	38	41.5	90°	153°	Each
Vs-3043	(V3.04.3) Michelin Double Bend Tube Valve	20	59	38.5	94°	163°	Each
Vs-3044	(V3.04.4) Michelin Double Bend Tube Valve	20	74	40	94°	144°	Each
Vs-3045	(V3.04.5) Michelin Double Bend Tube Valve	20	76	47.5	90°	153°	Each
Vs-3046	(V3.04.6) Michelin Double Bend Tube Valve	20	86	47.5	90°	153°	Each
Vs-3047	(V3.04.7) Michelin Double Bend Tube Valve	20.5	30.5	38	90°	154°	Each
Vs-3048	(V3.04.8) Michelin Double Bend Tube Valve	20.5	38.5	43	90°	167°	Each
Vs-30410	(V3.04.10) Michelin Double Bend Tube Valve	20.5	47	53	90°	154°	Each
Vs-30411	(V3.04.11) Michelin Double Bend Tube Valve	20.5	47	63.5	90°	154°	Each
Vs-30415	(V3.04.15) Michelin Double Bend Tube Valve	20.5	42	38.5	90°	120°	Each
Vs-30417	(V3.04.17) Michelin Double Bend Tube Valve	20	65	45	90°	160°	Each
Vs-30418	(V3.04.18) Michelin Double Bend Tube Valve	20	72	45	90°	160°	Each
Vs-30421	(V3.04.21) Michelin Double Bend Tube Valve	20	83	57	94°	154°	Each
Vs-30422	(V3.04.22) Michelin Double Bend Tube Valve	20	28	47	94°	164°	Each
Vs-30423	(V3.04.23) Michelin Double Bend Tube Valve	20	46	47	94°	164°	Each
Vs-30424	(V3.04.24) Michelin Double Bend Tube Valve	20	58	47	90°	164°	Each
Vs-30425	(V3.04.25) Michelin Double Bend Tube Valve	20	80	47	94°	164°	Each
Vs-30426	(V3.04.26) Michelin Double Bend Tube Valve	20	99	42	99°	189°	Each

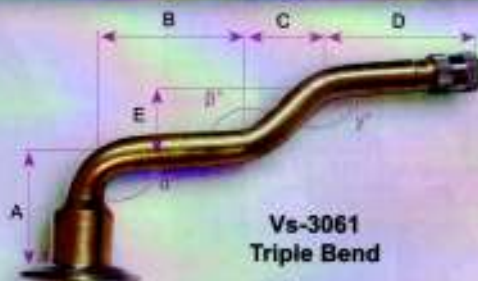


MICHELIN SCREW-ON TUBE VALVE STEMS

MICHELIN TRIPLE BEND

All Measurements are in Millimeters (mm).

SKU #	PRODUCT DESCRIPTION	A	B	C	D	E	α°	β°	γ°	QTY
Vs-3061	(V3.06.1) Michelin Triple Bend Tube Valve	20.5	30.5	19.5	35.5	17	90°	139°	139°	Each
Vs-3062	(V3.06.2) Michelin Triple Bend Tube Valve	20.5	44.5	12	37.5	17	90°	128°	125°	Each
Vs-3063	(V3.06.3) Michelin Triple Bend Tube Valve	20.5	46	20.5	47.5	17	90°	140°	140°	Each
Vs-3065	(V3.06.5) Michelin Triple Bend Tube Valve	20.5	62.5	19.5	49	17	90°	139°	139°	Each
Vs-3066	(V3.06.6) Michelin Triple Bend Tube Valve	20	79.5	19.5	37.5	17	90°	139°	139°	Each
Vs-3067	(V3.06.7) Michelin Triple Bend Tube Valve	20.5	45.5	18.5	42.5	17	90°	137°	137°	Each
Vs-3068	(V3.06.8) Michelin Triple Bend Tube Valve	24.5	61.5	14.5	50.5	7.5	94°	153°	153°	Each
Vs-3069	(V3.06.9) Michelin Triple Bend Tube Valve	20.5	67.5	19.5	54.5	17	90°	139°	139°	Each
Vs-30612	(V3.06.12) Michelin Triple Bend Tube Valve	23.5	71.5	19.5	25.5	11.5	90°	150°	150°	Each
Vs-30614	(V3.06.14) Michelin Triple Bend Tube Valve	20	50	13	40	7	94°	153°	153°	Each
Vs-30615	(V3.06.15) Michelin Triple Bend Tube Valve	20	60	13	40	7	94°	153°	153°	Each
Vs-30616	(V3.06.16) Michelin Triple Bend Tube Valve	20	62	13	50	7	94°	153°	153°	Each
Vs-30617	(V3.06.17) Michelin Triple Bend Tube Valve	20	75	13	50	7	94°	153°	153°	Each



HARDWARE FOR MICHELIN SCREW-ON VALVE STEMS

SKU #	PRODUCT DESCRIPTION	QTY
Vh-3082-1	(V3.08.2) Rubber Tube Spud (70mm)	Each
Vh-3083-1	(V3.08.3) Rubber Tube Spud (80mm)	Each
Vh-3084-1	(V3.08.4) Rubber Tube Spud (57mm)	Each
Vh-9051-2	Rubber Washer for Universal Brass Tube Valves	Bag of 2



Vh-3083



Vh-3082



Vh-3084



Vh-9051

SKU #	PRODUCT DESCRIPTION	QTY
Ve-336-2	1/2" Plastic Valve Extension	Blister Card of 2
Ve-336-50	1/2" Plastic Valve Extension	Pic-Pak of 50
Ve-336-100	1/2" Plastic Valve Extension	Box of 100
Ve-341-2	3/4" Plastic Valve Stem Extension	Blister Card of 2
Ve-341-40	3/4" Plastic Valve Stem Extension	Pic-Pak of 40
Ve-341-100	3/4" Plastic Valve Stem Extension	Box of 100
Ve-342-2	1 1/4" Plastic Valve Stem Extension	Blister Card of 2
Ve-342-25	1 1/4" Plastic Valve Stem Extension	Pic-Pak of 25
Ve-342-100	1 1/4" Plastic Valve Stem Extension	Box of 100
Ve-343-4	1 1/2" Plastic Valve Stem Extension	Blister Card of 4
Ve-343-20	1 1/2" Plastic Valve Stem Extension	Pic-Pak of 20
Ve-343-100	1 1/2" Plastic Valve Stem Extension	Box of 100
Ve-336M-4	1/2" (13mm) Metal Extension	Blister Card of 4
Ve-336M-25	1/2" (13mm) Metal Extension	Pic-Pak of 25
Ve-341D-25	"SealRite" Double Seal Valve Cap, 3/4" (19mm) effective length	Pic-Pak of 25
Ve-341D-100	"SealRite" Double Seal Valve Cap, 3/4" (19mm) effective length	Bag of 100
Ve-341M-4	3/4" (19mm) Metal Extension	Blister Card of 4
Ve-341M-25	3/4" (19mm) Metal Extension	Pic-Pak of 25
Ve-342M-4	1 1/4" (32mm) Metal Extension	Blister Card of 4
Ve-342M-25	1 1/4" (32mm) Metal Extension	Pic-Pak of 25
Ve-DW7	7" (18 Cm) EPDM Rubber Valve Extension w/Clamp for Dual Wheels	Blister Card of 1
Ve-DW9	9" (23 Cm) EPDM Rubber Valve Extension w/Clamp for Dual Wheels	Blister Card of 1
Ve-DW11	11" (28 Cm) EPDM Rubber Valve Extension w/Clamp for Dual Wheels	Blister Card of 1

SEALRITE!

DOUBLE SEAL VALVE CAP



Ve-341D - "SealRite" Double Seal Valve Cap features:

- 3/4" (19mm) effective length
- Inflate, deflate or check air pressure directly through the Ve-341D
- No removal needed, so it won't get lost.
- No need to add an additional cap--it IS a cap!
- Heat-resistant grommets give extra protection for performance in high-temperature settings.
- Cap seals like a high-pressure cap and can be used like a valve extension.
- The exterior seal is stronger than some of our competitors to prevent dirt from entering from the outside.



Recreational Vehicle Dual Wheel Extension with flexible hose. Provides easy access to the inner rear tire on campers, recreational vehicles and light trucks. Also useful for fitting to spare wheels that are often difficult to access when checking the pressure. Fits standard valve cap threads. Clamp is easily secured to rim cut out.



Metal heavy duty valve extensions fit most applications, extending the length of the valve stem needed for many types of wheels. Allows the inflation/deflation and checking of the air pressure through the metal extension. (Also know as Inflate through cap.)



Sturdy plastic valve extensions fit most applications, extending the length of the valve stem needed for many types of wheels. Allows the inflation/deflation and checking of the air pressure through the plastic extension. (Also know as Inflate through cap.)



Vc-114G Vc-114R Vc-114Y



Vc-124B Vc-124P Vc-124R Vc-124Y



Vc-134B Vc-134G Vc-134P Vc-134R Vc-134Y



Vc-337* Vc-338 Vc-339 Vc-340

*Vc-337- Dome Valve Cap includes Heat Resistant Gasket.



Vc-341 Vc-342 Vc-345 Vc-346



Vc-349 Vc-350 Vc-400

Avoid clutter and disorganization! We recommend our Pic-Pak Inventory Management System to keep your inventory protected and organized.

SKU #	PRODUCT DESCRIPTION	QTY
Vc-114G-4	Bullet Style Metal Cap (Green) (Nitrogen Identification)	Blister Card of 4
Vc-114G	Bullet Style Metal Cap (Green) (Nitrogen Identification)	Pic-Pak of 60
Vc-114R-4	Bullet Style Metal Cap (Red)	Blister Card of 4
Vc-114R	Bullet Style Metal Cap (Red)	Pic-Pak of 60
Vc-114Y-4	Bullet Style Metal Cap (Yellow)	Blister Card of 4
Vc-114Y	Bullet Style Metal Cap (Yellow)	Pic-Pak of 60
Vc-124B-4	Domed, Ribbed Black Metal Valve Cap	Blister Card of 4
Vc-124B	Domed, Ribbed Black Metal Valve Cap	Pic-Pak of 100
Vc-124P-4	Domed, Ribbed Purple Metal Valve Cap	Blister Card of 4
Vc-124P	Domed, Ribbed Purple Metal Valve Cap	Pic-Pak of 100
Vc-124R-4	Domed, Ribbed Red Metal Valve Cap	Blister Card of 4
Vc-124R	Domed, Ribbed Red Metal Valve Cap	Pic-Pak of 100
Vc-124Y-4	Domed, Ribbed Yellow Metal Valve Cap	Blister Card of 4
Vc-124Y	Domed, Ribbed Yellow Metal Valve Cap	Pic-Pak of 100
Vc-134B-4	Hex Style Blue Metal Valve Cap	Blister Card of 4
Vc-134B	Hex Style Blue Metal Valve Cap	Pic-Pak of 100
Vc-134G-4	Hex Style Green Metal Valve Cap (Nitrogen Identification)	Blister Card of 4
Vc-134G	Hex Style Green Metal Valve Cap (Nitrogen Identification)	Pic-Pak of 100
Vc-134P-4	Hex Style Purple Metal Valve Cap	Blister Card of 4
Vc-134P	Hex Style Purple Metal Valve Cap	Pic-Pak of 100
Vc-134R-4	Hex Style Red Metal Valve Cap	Blister Card of 4
Vc-134R	Hex Style Red Metal Valve Cap	Pic-Pak of 100
Vc-134Y-4	Hex Style Yellow Metal Valve Cap	Blister Card of 4
Vc-134Y	Hex Style Yellow Metal Valve Cap	Pic-Pak of 100
Vc-337-5	Nickel-Plated Brass Tire Valve Cap	Blister Card of 5
Vc-337-100	Nickel-Plated Brass Tire Valve Cap	Pic-Pak of 100
Vc-338-4	Valve Cap with Core Tool (Brass)	Blister Card of 4
Vc-338	Valve Cap with Core Tool (Brass)	Pic-Pak of 50
Vc-339-4	Valve Cap with Core Tool (Nickel)	Blister Card of 4
Vc-339	Valve Cap with Core Tool (Nickel)	Pic-Pak of 50
Vc-340-5	Plastic Tire Valve Cap (standard OEM with "O" ring)	Blister Card of 5
Vc-340-100	Plastic Tire Valve Cap (standard OEM with "O" ring)	Pic-Pak of 100
Vc-341-5	Chrome Valve Cap, Hex w/ Dome Type w/ O-Ring Seal	Blister Card of 5
Vc-341-100	Chrome Valve Cap, Hex w/ Dome Type w/ O-Ring Seal	Pic-Pak of 100
Vc-342-5	Chrome Valve Cap, Hex Type w/ O-Ring Seal	Blister Card of 5
Vc-342-100	Chrome Valve Cap, Hex Type w/ O-Ring Seal	Pic-Pak of 100
Vc-345-100	Green Plastic Tire Valve Cap (Nitrogen Identification)	Pic-Pak of 100
Vc-346-5	Gray Plastic Tire Valve Caps	Blister Card of 5
Vc-346-100	Gray Plastic Tire Valve Caps	Pic-Pak of 100
Vc-349-4	Brass Valve Cap with Core Tool & Cap	Blister Card of 4
Vc-349	Brass Valve Cap with Core Tool & Cap	Pic-Pak of 50
Vc-350-4	Plastic Valve Cap, Black, Agriculture	Blister Card of 4
Vc-350	Plastic Valve Cap, Black, Agriculture	Pic-Pak of 50
Vc-400-4	TPMS Plastic Valve Cap - Black with inner seal	Blister Card of 4
Vc-400-50	TPMS Plastic Valve Cap - Black with inner seal	Pic-Pak of 50



“GUARANTEED FOR THE LIFE OF THE TIRE” & “LIFETIME WARRANTY”

As a token of our appreciation for our valued customers, and the confidence we have in our products, we are pleased to offer our customers our “Guaranteed for the Life of the Tire” & “Limited Lifetime Warranty” Programs. For complete information about these and our complete product line please go to www.BlackJackTireRepair.com.

Please call us for any needed warranty assistance at 816-872-1158.

**WE STAND BEHIND OUR PRODUCTS FOR THEIR
VALUE, QUALITY, AND RELIABILITY.**

PRODUCT LIABILITY

Tire repair is a serious business. All tire repairs should be performed by a certified technician in compliance with RMA standards. BlackJack accepts no liability in the use and installation of any tire repair. Each technician must decide which tires are repairable and the procedure to accomplish his goal. We carry product liability to cover any fault of ours but it is not designed to cover improper tire repair. NOTE: No repaired tire is as good as a new tire, just like a retread tire is not as good as the original new tire.



The Open Road is a serene place,
Until you run into something
Unexpected...



BLACK JACK
www.BLACKJACKTIREREPAIR.COM

CATALOG #0214



BJ-110 - Catalog